

# James Taxidermy Supply



To Our Customers and Friends,

We would like to take this opportunity to extend to our customers a special "Thank You" for your past patronage with us. "We greatly appreciate your business"!!

We will continue to strive to serve you at the best of our ability, with the best products on the market, at the lowest prices possible.

Also, we would like this opportunity to thank the taxidermy associations, whom spend endless hours of hard work in putting our taxidermy conventions together. "What a great job they do" Through the taxidermy shows we are able to show the newest supplies, learning new ideals and techniques. With seminars and knowledgeable instructors, with open minds, we all can share and learn from one another. Also, through the taxidermy shows we can enjoy spending time with our customers, new friends and other supplier.

Again, wishing everyone many successful years in taxidermy and hoping we can continue to serve you!!  
God Bless you and your family!  
Sincerely,

James' Taxidermy Supply, LLC

Kenny & Denise James-Owners



A.T.A Award 2016



T.T.A Award 2012



*K-948 Veterans Extreme  
Wall Ped Page 34  
One Size available*



L.T.A Award 2015



*Noonies Small Mammals  
Refer to page 57-60*



*Cary Cochran  
Med Deer Earliners  
Refer to page 74*



# Table of Content

Refer to Page 118  
For terms and conditions

## 400 SERIES

SEMI - SNEAK

FULLER LEG DETAIL &  
BIGGER SHOULDERS

SEE PAGE 4 FOR MORE DETAILS



## EXCLUSIVE

KENNY'S STICK-IT  
HIDE PASTE

Refer to page 102



Deer, Specialty & Econo Forms



Pg 3 - 35

Doe Deer, Elk, Exotics & Ram Forms



Pg 36 - 40

Mammal Forms



Pg 45 - 62

Ozark Woods



Pg 51 - 56

Glass Eyes



Pg 63 - 73

Jawsets



Pg 43 - 44

Turkey Forms & Heads



Pg 76 - 77

Waterfowl & Upland



Pg 79 - 82

Fish Forms & Eyes



Pg 83 - 84

Airbrushed & Paint



Pg 92 - 97

Tanning & Chemicals



Pg 98 - 102

Tools



Pg 103 - 110

Panels



Pg 86 - 91

Earliners



Pg 74 - 75

# 400 Series



Mounted By  
Paul Witt  
Belmont, MS



# Semi Sneak 400 Series

## Offset Shoulder Semi- Sneak

Full Neck Muscle Detail with Ear Orbits, Pre-Set Eye Orbit & more leg feature



WHITE TAIL 400 SERIES SEMI SNEAK

FORM	SIZE "A" x "C"	POSITION	EYE	PRICE
KWT-416	6 3/4 x 17	RT Semi Sneak	32mm	\$ 66.00
KWT-417	6 3/4 x 17	LT Semi Sneak	32mm	\$ 66.00
KWT-418	7 x 18	RT Semi Sneak	32mm	\$ 67.00
KWT-419	7 x 18	LT Semi Sneak	32mm	\$ 67.00
KWT-420	7 x 19	RT Semi Sneak	32mm	\$ 68.00
KWT-421	7 X 19	LT Semi Sneak	32mm	\$ 68.00
KWT-422	7 1/4 x 20	RT Semi Sneak	32mm	\$ 69.00
KWT-423	7 1/4 x 20	LT Semi Sneak	32mm	\$ 69.00
KWT-424	7 1/2 x 21	RT Semi Sneak	32mm	\$ 70.00
KWT-425	7 1/2 X 21	LT Semi Sneak	32mm	\$ 70.00
KWT-426	7 3/4 x 22	RT Semi Sneak	32mm	\$ 71.00
KWT-427	7 3/4 x 22	LT Semi Sneak	32mm	\$ 71.00
KWT-428	23	RT Semi Sneak	32mm	Future
KWT-429	23	LT Semi Sneak	32mm	Future
KWT-430	8 x 24	RT Semi Sneak	32mm	\$ 73.00
KWT-431	8 x 24	LT Semi Sneak	32mm	\$ 73.00

# 900 Series



Mounted By  
Ken James II  
Glen, MS



# Semi Upright 900 Series

## *Offset Shoulder Semi- Upright*

Full Neck Muscle Detail with Ear Orbits, Pre-Set Eye Orbit & More leg

WHITE TAIL 900 SERIES SEMI UPRIGHT



FORM	SIZE "A" x "C"	POSITION	EYE	PRICE
K-902	6 1/2 x 17	RT Semi Upright	32mm	\$ 66.00
K-903	6 1/2 x 17	LT Semi Upright	32 mm	\$ 66.00
K-904	7 x 18	RT Semi Upright	32 mm	\$ 67.00
K-905	7 x 18	LT Semi Upright	32 mm	\$ 67.00
K-906	7 x 19	RT Semi Upright	32 mm	\$ 68.00
K-907	7 x 19	LT Semi Upright	32 mm	\$ 68.00
K-908	7 1/4 x 20	RT Semi Upright	32 mm	\$ 69.00
K-909	7 1/4 x 20	LT Semi Upright	32 mm	\$ 69.00
K-910	7 1/2 x 21	RT Semi Upright	32 mm	\$ 70.00
K-911	7 1/2 x 21	LT Semi Upright	32 mm	\$ 70.00
K-912	7 1/2 x 22	RT Semi Upright	32 mm	\$ 71.00
K-913	7 1/2 x 22	LT Semi Upright	32 mm	\$ 71.00

# Wall Pedestal Series



Mounted by  
Paul Witt  
Belmont, MS



# Wall Pedestal - 600 Series

## *Offset Shoulder Semi-Sneak*

Full Neck Muscle Detail with Ear Orbits and Pre-Set Eye Orbit

WHITE TAIL 600 SERIES WALL PEDESTAL



FORM	SIZE "A" x "C"	POSITION	EYE	PRICE
KWP-608	7 x 18	RT Wall Pedestal	32 mm	\$ 69.00
KWP-609	7 x 18	LT Wall Pedestal	32 mm	\$ 69.00
KWP-610	7 x 19	RT Wall Pedestal	32 mm	\$ 70.00
KWP-611	7 x 19	LT Wall Pedestal	32 mm	\$ 70.00
KWP-612	7 1/4 x 20	RT Wall Pedestal	32 mm	\$ 71.00
KWP-613	7 1/4 x 20	LT Wall Pedestal	32 mm	\$ 71.00
KWP-614	7 1/2 x 21	RT Wall Pedestal	32 mm	\$ 72.00
KWP-615	7 1/2 x 21	LT Wall Pedestal	32 mm	\$ 72.00
KWP-616	7 3/4 x 22	RT Wall Pedestal	32 mm	\$ 73.00
KWP-617	7 3/4 x 22	LT Wall Pedestal	32 mm	\$ 73.00

# 200 Series



Mounted by  
Kerry Tabor  
Beebe, AR



# Rutting Buck Competition - 200 series

## *Offset Shoulder Semi-Sneak*

Full Neck Muscle Detail with Ear Orbits and Pre-Set Eye Orbit



WHITETAIL 200 SERIES SEMI SNEAK

FORM	SIZE "A" x "C"	POSITION	EYE	PRICE
KWT-252	7 x 18	RT Semi-Sneak	32 mm	\$ 64.00
KWT-253	7 x 18	LT Semi-Sneak	32 mm	\$ 64.00
KWT-248	7 x 19	RT Semi-Sneak	32 mm	\$ 65.00
KWT-249	7 x 19	LT Semi-Sneak	32 mm	\$ 65.00
KWT-250	7 1/4 x 20	RT Semi-Sneak	32 mm	\$ 66.00
KWT-251	7 1/4 x 20	LT Semi-Sneak	32 mm	\$ 66.00
KWT-254	7 1/2 x 21	RT Semi-Sneak	32 mm	\$ 67.00
KWT-255	7 1/2 x 21	LT Semi-Sneak	32 mm	\$ 67.00
KWT-256	7 3/4 x 22	LT Semi-Sneak	32 mm	\$ 68.00
KWT-257	7 3/4 x 22	RT Semi-Sneak	32 mm	\$ 68.00
KWT-258	8 x 23	LT Semi-Sneak	32 mm	\$ 69.00
KWT-259	8 x 23	RT Semi-Sneak	32 mm	\$ 69.00

# 300 Series



Mounted by  
Kenny James II  
Glen, MS



# Med Semi Upright - 300 Series

## *Medium Semi Upright Offset Shoulder Competition Style*

Fuller Neck with Full Muscle Detail and Pre-Set Eye Orbit



WHITETAIL 300 SERIES MED SEMI UPRIGHT

FORM	SIZE "A" x "C"	POSITION	EYE	PRICE
K-300	6 x 14 1/2	LT Med Upright	28 mm	\$ 60.00
K-301	6 x 14 1/2	RT Med Upright	28 mm	\$ 60.00
K-302	6 1/4 x 15 1/2	LT Med Upright	28 mm	\$ 61.00
K-303	6 1/4 x 15 1/2	RT Med Upright	28 mm	\$ 61.00
K-304	6 1/2 x 16 1/2	LT Med Upright	28 mm	\$ 62.00
K-305	6 1/2 x 16 1/2	RT Med Upright	28 mm	\$ 62.00
K-306	6 3/4 x 17 1/2	LT Med Upright	30 mm	\$ 63.00
K-307	6 3/4 x 17 1/2	RT Med Upright	30 mm	\$ 63.00
K-308	6 7/8 x 18 1/2	LT Med Upright	30 mm	\$ 64.00
K-309	6 7/8 x 18 1/2	RT Med Upright	30 mm	\$ 64.00
K-310	7 x 19 1/2	LT Med Upright	32 mm	\$ 65.00
K-311	7 x 19 1/2	RT Med Upright	32 mm	\$ 65.00
K-312	7 1/4 x 20 1/2	LT Med Upright	32 mm	\$ 66.00
K-313	7 1/4 x 20 1/2	RT Med Upright	32 mm	\$ 66.00
K-314	7 5/8 x 21 1/2	LT Med Upright	32 mm	\$ 67.00
K-315	7 5/8 x 21 1/2	RT Med Upright	32 mm	\$ 67.00

# 500 Series



Mounted by  
Dwayne Burcham  
Tishomingo, MS



# Northern Line - 500 Series

## *Medium Semi Upright Offset Shoulder Competition Series*

Fuller Neck and Shoulders, Longer Face, Longer Neck, Full Muscle Detail with Pre-Set Eye Orbit



WHITETAILS 500 SERIES MED SEMI UPRIGHT

FORM	SIZE "A" x "C"	POSITION	EYE	PRICE
K-506	7 x 17 1/2	LT Med Upright	30 mm	\$ 64.00
K-507	7 x 17 1/2	RT Med Upright	30 mm	\$ 64.00
K-508	7 3/8 x 18 1/2	LT Med Upright	30 mm	\$ 65.00
K-509	7 3/8 x 18 1/2	RT Med Upright	30 mm	\$ 65.00
K-510	7 5/8 x 19 1/2	LT Med Upright	32 mm	\$ 66.00
K-511	7 5/8 x 19 1/2	RT Med Upright	32 mm	\$ 66.00
K-512	7 3/4 x 20 1/2	LT Med Upright	32 mm	\$ 67.00
K-513	7 3/4 x 20 1/2	RT Med Upright	32 mm	\$ 67.00

# Medium Semi Upright



Mounted by  
Kenny James II  
Glen, MS



# Medium Semi Upright Competition Series

Full Muscle Detail / Regular Shoulders with Pre-Set Eye Orbit

WHITE TAIL MED SEMI UPRIGHT



FORM	SIZE "A" x "C"	POSITION	EYE	PRICE
K-84	6 1/2 x 15	RT Med Upright	28 mm	\$ 61.00
K-83	6 1/2 x 15	LT Med Upright	28 mm	\$ 61.00
K-82	6 1/2 x 16 1/8	RT Med Upright	28 mm	\$ 62.00
K-81	6 1/2 x 16 1/8	LT Med Upright	28 mm	\$ 62.00
K-79	6 7/8 x 17	RT Med Upright	30 mm	\$ 63.00
K-80	6 7/8 x 17	LT Med Upright	30 mm	\$ 63.00
K-78	6 7/8 x 18	RT Med Upright	30 mm	\$ 64.00
K-77	6 7/8 x 18	LT Med Upright	30 mm	\$ 64.00
K-76	7 x 19	RT Med Upright	30 mm	\$ 65.00
K-75	7 x 19	LT Med Upright	30 mm	\$ 65.00
K-74	7 1/4 x 20	RT Med Upright	32 mm	\$ 66.00
K-73	7 1/4 x 20	LT Med Upright	32 mm	\$ 66.00
K-72	7 5/8 x 21	RT Med Upright	32 mm	\$ 67.00
K-71	7 5/8 x 21	LT Med Upright	32 mm	\$ 67.00
K-69	7 3/4 x 22	RT Med Upright	32 mm	\$ 68.00
K-70	7 3/4 x 22	LT Med Upright	32 mm	\$ 68.00

# High Upright



Mounted by  
Paul Witt  
Belmont., MS



# High Upright Competition Series

Full Muscle Detail / Regular Shoulders with Pre-Set Eye Orbit

WHITETAILS HIGH UPRIGHT SERIES



FORM	SIZE "A" x "C"	POSITION	EYE	PRICE
K-46	5 3/4 x 14	RT High Upright	28 mm	\$ 61.00
K-47	5 3/4 x 14	LT High Upright	28 mm	\$ 61.00
K-65	6 1/8 x 16	LT High Upright	28 mm	\$ 62.00
K-66	6 1/8 x 16	RT High Upright	28 mm	\$ 62.00
K-40	6 1/2 x 17	LT High Upright	28 mm	\$ 63.00
K-41	6 1/2 x 17	RT High Upright	28 mm	\$ 63.00
K-61	6 3/4 x 18	RT High Upright	30 mm	\$ 64.00
K-62	6 3/4 x 18	LT High Upright	30 mm	\$ 64.00
K-38	6 3/4 x 19	LT High Upright	30 mm	\$ 65.00
K-39	7 x 19	RT High Upright	30 mm	\$ 65.00
K-44	7 x 19 1/4	RT High Upright	30 mm	\$ 65.00
K-45	7 x 19 1/4	LT High Upright	30 mm	\$ 65.00
K-63	7 1/4 x 20	RT High Upright	30 mm	\$ 66.00
K-64	7 1/4 x 20	LT High Upright	30 mm	\$ 66.00
K-67	7 1/2 x 21	RT High Upright	32 mm	\$ 67.00
K-68	7 1/2 x 21	LT High Upright	32 mm	\$ 67.00

# Petite Rutting Buck



Mounted by  
Matt Armstrong  
Corinth, MS



# Petite Rutting Buck Competition Series

Full Muscle Detail with Pre-Set Eye Orbit

WHITETAIL PETITE SERIES SEMI SNEAK



FORM	SIZE "A" x "C"	POSITION	EYE	PRICE
K-198	6 1/8 x 14	LT Petite Semi Sneak	28 mm	\$ 60.00
K-199	6 1/8 x 14	RT Petite Semi Sneak	28 mm	\$ 60.00
K-201	6 1/4 x 15	LT Petite Semi Sneak	28 mm	\$ 61.00
K-202	6 1/4 x 15	RT Petite Semi Sneak	28 mm	\$ 61.00
K-203	6 1/2 x 16	LT Petite Semi Sneak	28 mm	\$ 62.00
K-204	6 1/2 x 16	RT Petite Semi Sneak	28 mm	\$ 62.00
K-205	6 3/4 x 17	RT Petite Semi Sneak	30 mm	\$ 63.00
K-206	6 3/4 x 17	LT Petite Semi Sneak	30 mm	\$ 63.00

# Straight Series



Mounted by  
Kerry Tabor  
Beebe, AR



# Straight Series Full Muscle Detail with Pre-Set Eye Orbit

HIGH UPRIGHT

MEDIUM UPRIGHT

SEMI SNEAK



WHITETAIL STRAIGHT SERIES

FORM	SIZE "A" x "C"	POSITION	EYE	PRICE
K-110	6 1/2 x 16 1/2	Med Upright Straight	28 mm	\$ 62.00
K-111	6 7/8 x 17 1/2	Med Upright Straight	30 mm	\$ 63.00
KJ-109	7 x 18 1/2	Med Upright Straight	32 mm	\$ 64.00
K-112	7 x 19 1/2	Med Upright Straight	32 mm	\$ 65.00
KWT-113	7 1/4 x 20 1/2	Med Upright Straight	32 mm	\$ 66.00
K-114	7 1/2 x 21 1/2	Med Upright Straight	32 mm	\$ 67.00
K-115	7 3/4 x 22 1/2	Med Upright Straight	32 mm	\$ 68.00
K-116	8 x 23 1/2	Med Upright Straight	32 mm	\$ 69.00
K-58	6 x 16	High Upright Straight	28 mm	\$ 62.00
K-157	6 1/2 x 17	High Upright Straight	30 mm	\$ 63.00
K-59	6 3/4 x 18	High Upright Straight	30 mm	\$ 64.00
K-60	7 1/4 x 20	High Upright Straight	30 mm	\$ 66.00
K-211	7 x 18	Semi Sneak Straight	32 mm	\$ 64.00
K-212	7 x 19	Semi Sneak Straight	32 mm	\$ 65.00
K-213	7 x 20	Semi Sneak Straight	32 mm	\$ 66.00
K-214	7 1/2 x 21	Semi Sneak Straight	32 mm	\$ 67.00
K-215	7 3/4 x 22	Semi Sneak Straight	32mm	\$ 68.00

# HeadUp Semi Sneak



Mounted by  
Kerry Tabor  
Beebe, AR



# HeadUp Semi Sneak Series

Full Muscle Detail with Ear Orbits and Pre-Set Eye Orbit

WHITETAILS HEAD UP SEMI SNEAK



FORM	SIZE "A" x "C"	POSITION	EYE	PRICE
K-252H	7 x 18	RT S. Sneak HeadUp	32 mm	\$ 64.00
K-253H	7 x 18	LT S. Sneak HeadUp	32 mm	\$ 64.00
K-248H	7 x 19	RT S. Sneak HeadUp	32 mm	\$ 65.00
K-249H	7 x 19	LT S. Sneak HeadUp	32 mm	\$ 65.00
K-250H	7 1/4 x 20	RT S. Sneak HeadUp	32 mm	\$ 66.00
K-251H	7 1/4 x 20	LT S. Sneak HeadUp	32 mm	\$ 66.00
K-254H	7 1/2 x 21	RT S. Sneak HeadUp	32 mm	\$ 67.00
K-255H	7 1/2 x 21	LT S. Sneak HeadUp	32 mm	\$ 67.00
K-256H	7 3/4 x 22	LT S. Sneak HeadUp	32 mm	\$ 68.00
K-257H	7 3/4 x 22	RT S. Sneak HeadUp	32 mm	\$ 68.00
K-258H	8 x 23	LT S. Sneak HeadUp	32 mm	\$ 69.00
K-259H	8 x 23	RT S. Sneak HeadUp	32 mm	\$ 69.00

# 50 Series - Rutting Buck Competition

Full Muscle Detail with Ear Orbits and Pre-Set Eye Orbit



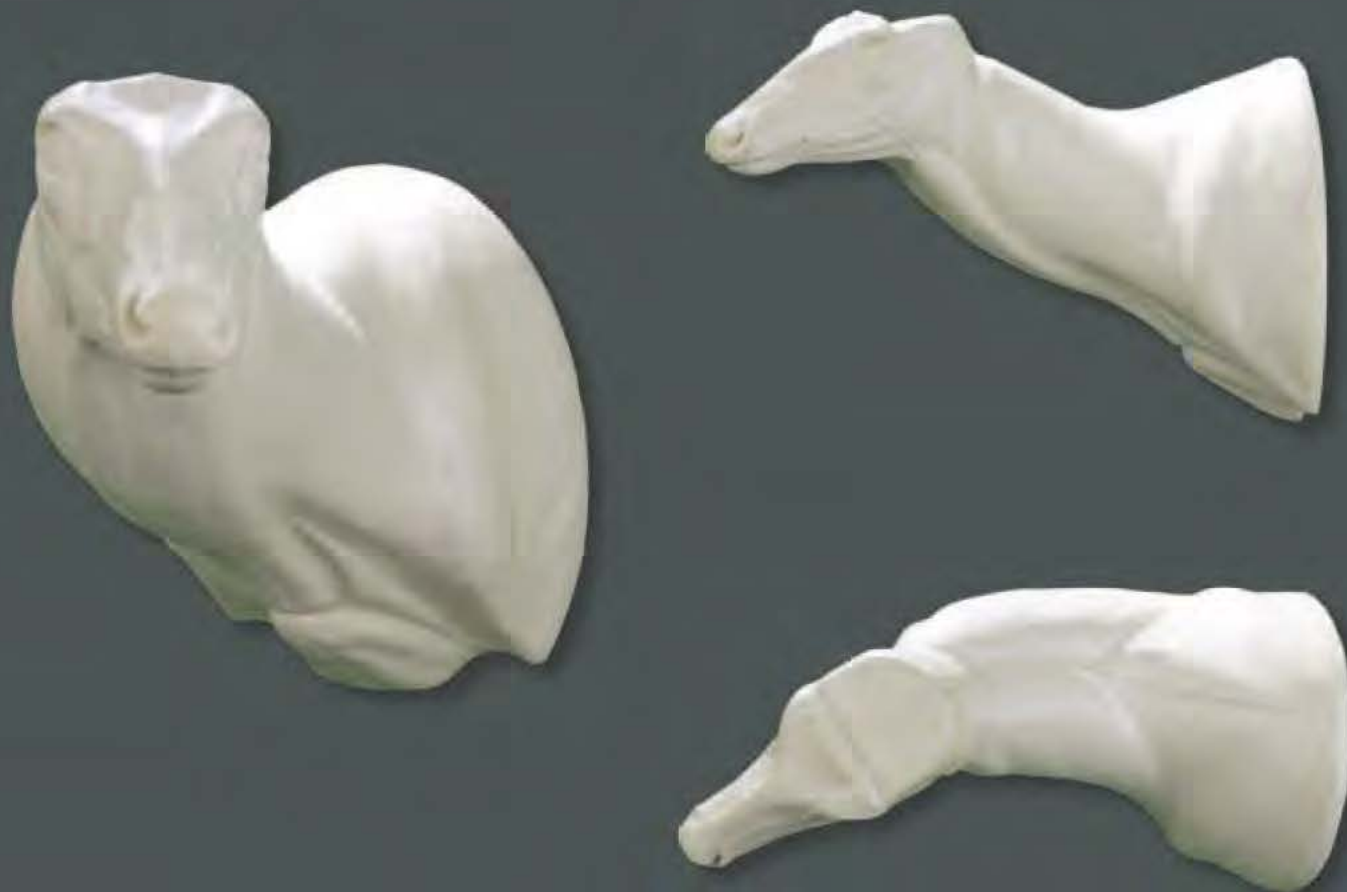
FORM	SIZE "A" x "C"	POSITION	EYE	PRICE
K-52	7 x 18	RT Semi Sneak	30 mm	\$ 64.00
K-53	7 x 18	LT Semi Sneak	30 mm	\$ 64.00
K-48	7 x 19	RT Semi Sneak	32 mm	\$ 65.00
K-49	7 x 19	LT Semi Sneak	32 mm	\$ 65.00
K-54	7 1/4 x 21	RT Semi Sneak	32 mm	\$ 67.00
K-55	7 1/4 x 21	LT Semi Sneak	32 mm	\$ 67.00
K-56	7 3/4 x 22	LT Semi Sneak	32 mm	\$ 68.00
K-57	7 3/4 x 22	RT Semi Sneak	32 mm	\$ 68.00



# Offset Semi Sneak - 50 Series

Full Muscle Detail, Head Lower Down with Pre-Set Eye Orbit

WHITETAILS 50 SERIES SEMI SNEAK



<i>FORM</i>	<i>SIZE "A" x "C"</i>	<i>POSITION</i>	<i>EYE</i>	<i>PRICE</i>
K-50A	6 x 16	RT Semi Sneak	28 mm	\$ 62.00
K-51A	6 x 16	LT Semi Sneak	28 mm	\$ 62.00
K-50	6 1/2 x 17	RT Semi Sneak	30 mm	\$ 63.00
K-51	6 1/2 x 17	LT Semi Sneak	30 mm	\$ 63.00
K-50B	7 x 18	RT Semi Sneak	30 mm	\$ 64.00
K-51B	7 x 18	LT Semi Sneak	30 mm	\$ 64.00

# 800 Series



Mounted by  
Kerry Tabor  
Beebe, AR



# Extreme Offset Sweep - 800 Series

Full Muscle Detail with Ear Orbits and Pre-Set Eye Orbit

WHITETAIL 800 SERIES EXTREME SWEEP



FORM	SIZE "A" x "C"	POSITION	EYE	PRICE
KWT-806	6 3/4 x 17 1/2	LT Offset Sweep	30 mm	\$ 63.00
KWT-807	6 3/4 x 17 1/2	RT Offset Sweep	30 mm	\$ 63.00
KWT-808	7 x 18 1/2	LT Offset Sweep	32 mm	\$ 64.00
KWT-809	7 x 18 1/2	RT Offset Sweep	32 mm	\$ 64.00
KWT-810	7 x 19 1/2	LT Offset Sweep	32 mm	\$ 65.00
KWT-811	7 x 19 1/2	RT Offset Sweep	32 mm	\$ 65.00
KWT-812	7 1/4 x 20 1/2	LT Offset Sweep	32 mm	\$ 66.00
KWT-813	7 1/4 x 20 1/2	RT Offset Sweep	32 mm	\$ 66.00

# Full Sneak Series



Mounted by  
Kerry Tabor  
Beebe, AR



# Full Sneak Competition Series

Full Muscle Detail with Pre-Set Eye Orbit

WHITETAIL FULL SNEAK SERIES



FORM	SIZE "A" x "C"	POSITION	EYE	PRICE
K-93	6 1/2 x 16	LT Full Sneak	28 mm	\$ 62.00
K-94	6 1/2 x 16	RT Full Sneak	28 mm	\$ 62.00
K-95	6 3/4 x 17	LT Full Sneak	30 mm	\$ 63.00
K-96	6 3/4 x 17	RT Full Sneak	30 mm	\$ 63.00
K-97	6 3/4 x 18	LT Full Sneak	30 mm	\$ 64.00
K-98	6 3/4 x 18	RT Full Sneak	30 mm	\$ 64.00
K-99	7 1/8 x 19	LT Full Sneak	32 mm	\$ 65.00
K-100	7 1/8 x 19	RT Full Sneak	32 mm	\$ 65.00
K-103	7 5/8 x 21	LT Full Sneak	32 mm	\$ 66.00
K-104	7 5/8 x 21	RT Full Sneak	32 mm	\$ 66.00

# Millennium Full Sneak



Mounted by  
Kerry Tabor  
Beebe, AR



# Millennium Full Sneak Competition Series

Full Muscle Detail with Ear Orbits and Pre-Set Eye Orbit

WHITETAIL FULL SNEAK HEAD UP



FORM	SIZE "A" x "C"	POSITION	EYE	PRICE
KWT-122	6 1/2 x 16	LT High Sneak	32 mm	\$ 62.00
KWT-123	6 1/2 x 16	RT High Sneak	32 mm	\$ 62.00
KWT-124	6 1/2 x 17	LT High Sneak	32 mm	\$ 63.00
KWT-125	6 1/2 x 17	RT High Sneak	32 mm	\$ 63.00
KWT-126	6 1/2 x 18	RT High Sneak	32 mm	\$ 64.00
KWT-127	6 1/2 x 18	LT High Sneak	32 mm	\$ 64.00
KWT-128	7 x 19	LT High Sneak	32 mm	\$ 65.00
KWT-129	7 x 19	RT High Sneak	32 mm	\$ 65.00
KWT-130	7 1/4 x 20	LT High Sneak	32 mm	\$ 66.00
KWT-131	7 1/4 x 20	RT High Sneak	32 mm	\$ 66.00
KWT-132	7 1/2 x 21	LT High Sneak	32 mm	\$ 67.00
KWT-133	7 1/2 x 21	RT High Sneak	32 mm	\$ 67.00
KWT-134	7 1/2 x 22	LT High Sneak	32 mm	\$ 68.00
KWT-135	7 1/2 x 22	RT High Sneak	32 mm	\$ 68.00
KWT-136	7 3/4 x 23	LT High Sneak	32 mm	\$ 69.00
KWT-137	7 3/4 x 23	RT High Sneak	32 mm	\$ 69.00

# Speciality Whitetail Series

## Aggressive Buck



K-401

## Hooking Aggressive Buck



AG-5

FORM	SIZE "A" x "C"	POSITION	EYE	PRICE
K-400	6 7/8 x 17 1/4	LT Aggressive	30 mm	\$ 64.00
K-401	6 7/8 x 17 1/4	RT Aggressive	30 mm	\$ 64.00
K-404	6 7/8 x 19 1/4	LT Aggressive	32 mm	\$ 66.00
K-405	6 7/8 x 19 1/4	RT Aggressive	32 mm	\$ 66.00
K-408	7 3/8 x 21	LT Aggressive	32 mm	\$ 67.00
K-409	7 3/8 x 21	RT Aggressive	32 mm	\$ 67.00
AG-2	7 x 18	RT Hooking Aggressive	32 mm	\$ 69.00
AG-3	7 x 18	LT Hooking Aggressive	32 mm	\$ 69.00
AG-4	7 x 19	RT Hooking Aggressive	32 mm	\$ 70.00
AG-5	7 x 19	LT Hooking Aggressive	32 mm	\$ 70.00
AG-6	7 1/4 x 20	RT Hooking Aggressive	32 mm	\$ 71.00
AG-7	7 1/4 x 20	LT Hooking Aggressive	32 mm	\$ 71.00

## Rubbing Buck



Mounted By: Don Stevens of Crossville, AL

FORM	SIZE "A" x "C"	POSITION	EYE	PRICE
K-200	6 3/4 x 18	LT Rubbing Buck	30mm	\$ 69.00



# Specialty Pedestal and Veterans Wall Ped

WHITETAIL SPECIALITY



Mounted By Ben Haden Of Cleburne, TX



Mounted By Justin Nottingham of Bono, AR

FORM	SIZE "A" x "C"	POSITION	EYE	PRICE
K-600	6 1/2 x 16	LT Pedestal OM	28 mm	\$ 70.00
K-948	7 x 19 (One Size Only)	LT. Extreme Wall Ped CM	32 mm	\$ 70.00

## Browsing Buck Open Mouth K-700



Sculptured & Mounted By Robert Wright Jr. Collinwood, TN



FORM	SIZE "A" x "C"	POSITION	EYE	PRICE
K-700	7 x 18	RT Browsing OM	30mm	\$ 70.00



# Economy Line Whitetail

Semi Sneak



Medium Upright



High Upright



SIZES



Deer Rump

Code	Price
Drump	\$ 25.95

FORM	SIZE "A" x "C"	POSITION	EYE	PRICE
K-43	5 3/4 x 14	LT Semi Sn	28 mm	\$ 52.00
K-42	5 3/4 x 14	RT Semi Sn	28 mm	\$ 52.00
K-23	6 1/4 x 16	LT Semi Sn	28 mm	\$ 54.00
K-24	6 1/4 x 16	RT Semi Sn	28 mm	\$ 54.00
K-21	6 1/2 x 18	LT Semi Sn	30 mm	\$ 55.00
K-22	6 1/2 x 18	RT Semi Sn	30 mm	\$ 55.00
K-20	7 x 20	LT Semi Sn	30 mm	\$ 57.00
K-19	7 x 20	RT Semi Sn	30 mm	\$ 57.00
K-27	7 1/2 x 22	LT Semi Sn	32 mm	\$ 58.00
K-28	7 1/2 x 22	RT Semi Sn	32 mm	\$ 58.00
K-12	6 1/4 x 16	RT Med UpR	28 mm	\$ 54.00
K-25	6 1/4 x 16	LT Med UpR	28 mm	\$ 54.00
K-31	6 1/4 x 16	RT Med UpR	28 mm	\$ 54.00
K-9	6 3/8 x 17 1/2	LT Med UpR	30 mm	\$ 55.00
K-10	6 3/8 x 18	LT Med UpR	30 mm	\$ 54.00
K-11	6 3/8 x 18	RT Med UpR	30 mm	\$ 54.00
K-3	7 x 19	LT Med UpR	30 mm	\$ 55.00
K-4	7 x 19	RT Med UpR	30 mm	\$ 55.00
K-14	6 3/4 x 20 1/2	LT Med UpR	32 mm	\$ 56.00
K-15	7 x 20 1/2	RT Med UpR	32 mm	\$ 56.00
K-13	7 x 21	RT Med UpR	32 mm	\$ 57.00
K-29	7 1/4 x 21 1/2	LT Med UpR	32 mm	\$ 58.00
K-30	7 1/4 x 21 1/2	RT Med UpR	32 mm	\$ 58.00
K-2	6 3/4 x 21 3/4	RT Med UpR	32 mm	\$ 58.00
K-1	7 x 22	LT Med UpR	32 mm	\$ 58.00
K-6	7 x 22 1/2	RT Med UpR	32 mm	\$ 58.00
K-32	7 1/2 x 22 1/2	RT Med UpR	32 mm	\$ 58.00
K-33	7 1/2 x 22 1/2	LT Med UpR	32 mm	\$ 58.00
K-16	7 x 24	RT Med UpR	32 mm	\$ 60.00
K-36	6 1/2 x 18	LT High UpR	30 mm	\$ 54.00
K-37	6 1/2 x 18 1/4	RT High UpR	30 mm	\$ 54.00
K-34	6 3/4 x 19	RT High UpR	30 mm	\$ 55.00
K-35	6 3/4 x 19	LT High UpR	30 mm	\$ 55.00
K-7	6 3/8 x 18	Straight	30 mm	\$ 54.00
K-8	7 x 20	Straight	30 mm	\$ 56.00
K-26	7 1/2 x 21 1/2	Str Rutting	32 mm	\$ 59.00



# Whitetail Doe



FORM	SIZE "A" x "C"	POSITION	EYE	PRICE
KD-1	6 1/4 x 13	RT Semi Sneak Doe	32mm	\$ 58.00
KD-2	6 1/4 x 13	LT Semi Sneak Doe	32mm	\$ 58.00
KD-5	6 3/4 x 15	RT Semi Sneak Doe	32mm	\$ 60.00
KD-6	6 3/4 x 15	LT Semi Sneak Doe	32mm	\$ 60.00

# Antelope and Black Buck



Sizes



JBB-4



JBB-4



Economy Antelope

FORM	SIZE "A" x "C"	POSITION	EYE	PRICE
ANT No. 1	7 x 12	RT Upright	30 mm	\$ 55.00
ANT No. 2	7 x 12	LT Upright	30 mm	\$ 55.00
JBB-2	5 1/8 x 14	RT Upright	28mm	\$ 63.00
JBB-3	5 1/8 x 14	LT Upright	28mm	\$ 63.00
JBB-1	5 1/8 x 14	STR Upright	28mm	\$ 63.00
JBB-4	5 3/8 x 15	STR Upright	28mm	\$ 64.00
JBB-5	5 3/8 x 15	LT Upright	28mm	\$ 64.00
JBB-6	5 3/8 x 15	RT Upright	28mm	\$ 64.00



Ant No. 2

# ELK Forms

## Semi Sneak Straight

Forms by James Taxidermy with Ear Orbits and pre-set eye orbits



Mounted By Justin Fiveashe, Glen, MS



FORM	SIZE "A" x "C"	POSITION	EYE	PRICE
ELK-2	10 1/2 x 24 1/2	Semi Sneak Straight	34mm	\$152.00
ELK-3	11 1/4 x 26 1/2	Semi Sneak Straight	36mm	\$162.00
ELK-4	11 1/2 x 28 1/2	Semi Sneak Straight	36mm	\$172.00





# Fallow Deer Forms

Forms by James Taxidermy with Ear Orbits and pre-set eye orbits



Fallow & Axis Deer

FORM	SIZE "A" x "C"	POSITION	EYE	PRICE
FA-4	7 x 19	RT Upright	32mm	\$ 69.00
FA-5	7 x 19	LT Upright	32mm	\$ 69.00
FA-7	7 x 20	LT Upright	32mm	Future

# Axis Deer Forms

Forms by James Taxidermy with Ear Orbits and pre-set eye orbits



FORM	SIZE "A" x "C"	POSITION	EYE	PRICE
AX-4	6 1/2 x 19	Semi Sneak RT.	32mm	\$ 69.00
AX-5	6 1/2 x 19	Semi Sneak LT.	32mm	\$ 69.00

# Sheep Competition Series



Mounted by  
Paul Witt  
Blemont, MS



# Sheep Competition Series

Forms by James Taxidermy with Ear Orbits and pre-set eye orbits



JSH-1



JSH-27



FORM	SIZE "A" x "C"	POSITION	EYE	PRICE
JSH-10	5 1/4 x 13	RT Med Upright	30 mm	\$ 62.00
JSH-11	5 1/4 x 13	LT Med Upright	30 mm	\$ 62.00
JSH-12	5 1/4 x 13	Straight Med Upright	30 mm	\$ 62.00
JSH-9	5 1/2 x 14	Straight Med Upright	30 mm	\$ 63.00
JSH-8	5 1/2 x 14	RT Med Upright	30 mm	\$ 63.00
JSH-7	5 1/2 x 14	LT Med Upright	30 mm	\$ 63.00
JSH-23	5 1/2 x 14	LT Semi Sneak	30 mm	\$ 63.00
JSH-24	5 1/2 x 14	RT Semi Sneak	30 mm	\$ 63.00
JSH-6	5 3/4 x 15	Straight Med Upright	30 mm	\$ 64.00
JSH-4	5 3/4 x 15	RT Med Upright	30 mm	\$ 64.00
JSH-5	5 3/4 x 15	LT Med Upright	30 mm	\$ 64.00
JSH-26	6 x 15	RT Semi Sneak	30 mm	\$ 64.00
JSH-27	6 x 15	LT Semi Sneak	30 mm	\$ 64.00
JSH-3	6 1/2 x 16	Straight Med Upright	30 mm	\$ 65.00
JSH-2	6 1/2 x 16	RT Med Upright	30 mm	\$ 65.00
JSH-1	6 1/2 x 16	LT Med Upright	30 mm	\$ 65.00
JSH-30	6 1/2 x 16	RT Semi Sneak	30 mm	\$ 65.00
JSH-29	6 1/2 x 16	LT Semi Sneak	30 mm	\$ 65.00



# Reproduction Skulls By Pinchback

## The Original European Skull

Pinchback Reproduction skulls are a great replacement for a missing or damaged skull. The open eye socket skull and attention to detail will make even the hard-to-please customer wondering, "Is it real?"

Each skull comes in two styles: one with pedicals, and one that is slotted or what we like to call convertible. Antlers are measured to the skull by the size of their pedicals, the diameter of the bone just under the antler burr. For those not wanting to remove the antlers from the skull cap, the slotted or convertible skull will be the correct choice.

The convertible slot size may look the same, but the skull sizes are different: use the small skull for small antlers and the large one for large antlers, keeping the antlers proportioned to the correct size skull is important and looks better.

Each skull comes with a block in the brain and sinus area for easy attachment to a panel or you can just attach a hanger to it.

For those customers wanting something different, you can offer them a camo-dipped skull: vista gray for the traditional camo look for the guys and pink mothwing winter mimicry for the ladies. These patterns are in-stock for all four sizes of the whitetail deer skulls. Ask about special order pricing in the camo patterns for the other types of skulls we offer but don't stock.

### (Pedicles Only)

Species	Code	Ped. Size	W x L	Price
Deer	PWTDSD	3/4"	4 1/2 x 10 3/4	\$ 41.00
Deer	PWTDMD	1"	4 5/16 x 11 1/4	\$ 41.00
Deer	PWTDLD	1 1/4"	4 3/8 x 11 5/16	\$ 41.00
Deer	PWTDXL	1 1/2"	5 1/8 x 12 1/4	\$ 41.00



PWTDL

### (Convertible Only)

Species	Code	Ped. Size	W x L	Price
Deer	SCWTDSD	3/4"	4 1/2 x 10 3/4	\$ 41.00
Deer	SCWTDMD	1"	4 5/16 x 11 1/4	\$ 41.00
Deer	SCWTDLD	1 1/4"	4 3/8 x 11 5/16	\$ 41.00
Deer	SCWTDXL	1 1/2"	5 1/8 x 12 1/4	\$ 41.00



SCWTDL



Measure across pedicle for size skull

### (Pedicles Only)

Species	Code	W x L	Price
Mule Deer	PMDP	5 1/2 x 11 5/16	\$ 41.00



PMDP

### (Convertible Only)

Species	Code	W x L	Price
Caribou	CCS	7 1/4 x 16	\$ 70.00



CCS

### (Pedicles or Convertible)

Species	Code	W x L	Price
Elk	PESP	7 1/2 x 18 3/4	\$ 78.00
Elk	ESC	7 1/2 x 18 3/4	\$ 78.00



PESP



ESC

### (Pedicles Only)

Species	Code	W x L	Price
Antelope	PASP	5 1/2 x 11 1/8	\$ 41.00



MSP



PASP

### (Pedicles Only)

Species	Code	W x L	Price
Moose	PMSP	8 1/2 x 24 1/2	\$ 149.00



# Reproduction Skulls By Pinchback

The Counterfeit skull looks just like a natural skull with teeth, but its artifical. The detail is exceptional . The Brain area is hollow . The spinal cord hole is open, and it allows for several different options relating to hangers, just like the natural skull. The counterfeit pedical skull comes with (2) aluminum square peg for attaching antler to skull.



(Counterfeit with teeth Pedicles Only)

Species	Code	Ped. Size	W x L	Price
Deer	PCFWTDM	1"	4 5/16 x 11 1/4	\$ 80.00
Deer	PCFWTDL	1 1/4"	4 3/8 x 11 5/16	\$ 82.00
Deer	PCFWTDXL	1 1/2"	5 1/8 x 12 1/4	\$ 84.00
Axis	CFAXPED	1 1/8	Medium	\$ 82.00

(Counterfeit with teeth Convertible Only)

Species	Code	Ped. Size	W x L	Price
Deer	CFWTDMCONV	1"	4 5/16 x 11 1/4	\$ 80.00
Deer	CFWTDLCONV	1 1/4"	4 3/8 x 11 5/16	\$ 82.00
Deer	CFWTDXLCONV	1 1/2"	5 1/8 x 12 1/4	\$ 84.00



(Counterfeit with teeth Elk Pedicles and Convertible)

Species	Code	W x L	Price
Elk	PCFEK	7 x 17 1/2	\$ 125.00
Elk	PCFEKC	7 x 17 1/2	\$ 125.00



## James' Antler Stain

Apply stain with rubber gloves and steel wool. Apply small amount and let dry. Buff with steel wool until desired shade is reached.

Code	Price
JSH4	\$ 5.00

(Pinchback Skull Plates)

Species	Code	Ped. Size	Price
Deer	PSPS	3/4"	\$ 7.75
Deer	PSPM	1"	\$ 7.75
Deer	PSPL	1 1/4"	\$ 7.75
Deer	PSPXL	1 1/2"	\$ 7.75



1 1/4"



1 1/2"

Brush-On, Wipe- Off Antler Paints are concentrated and a little will go along way. Once you are ready to paint a reproduction or a repaired antler, the antler paint must be thinned. Antler paint can be thinned with rubbing alcohol, lacquer thinner or minral spirits. Antler paint colors can be mixed with each other to achieve the correct color and tint.

## Antler Paint 4 oz.

Raw Umber, Royal Blue, White Clay Red , Black, Golden camel

Code	Price
PBSP4	\$ 15.50



## Antler Paint Kits 1 oz.

"Brush-on, Wipe-off" Antler Paint makes matching the color of those antler repairs easier with the colors. There are 5 colors in the kit box, one ounce of each color. All of the colors are available in 4 ounce bottles.

6 Color Kit

Code	Price
PBSP6	\$ 30.00



# Mohrs Jaw Sets Base Color

Mohrs jawsets are superior in the finest quality. The base color makes it were you dont have to guess the paint work and can blended very easily . The tongues look life like being textured and do not need painting . Mohrs jawset sets work good with Ozarks and Noonies small game bodies . Dont forget to get jaw juice for your jawset .

Attention : All jawsets come complete with tongues.



Bobcat

JB007	Med	\$ 24.55
-------	-----	----------

JB008	Large	\$ 25.65
-------	-------	----------

Bobcat Tongues

Snarling Tongue	TS007	Med	\$ 7.90
Relax Tongue	TR007	Med	\$ 7.90

Snarling Tongue	TS008	Large	\$ 8.15
Relax Tongue	TR008	Large	\$ 8.15



Bobcat ( jaw/throat )

JBT007	Med	\$ 33.05
--------	-----	----------

Snarling Tongues

TTS007	Med	\$ 9.15
--------	-----	---------



Bobcat ( jaw/throat )  
Hinged

JBT008H	Large	\$ 35.10
---------	-------	----------

Snarling Tongues

TTS008	Large	\$ 9.35
--------	-------	---------



Coyote ( Jaw/Throat )  
Howling

JBT012H	Med	\$ 37.65
---------	-----	----------

Snarling Tongue	TTSS012	Med	\$ 11.25
Relax Tongue	TTR012	Med	\$ 11.25



Coyote

JB012	Med	\$ 29.45
-------	-----	----------

Coyote Tongues

TR012	Med	\$ 9.35
TS012	Med	\$ 9.35



Coyote ( Jaw/Throat )

JBT012	Med	\$ 37.65
--------	-----	----------

Relax Tongue	TTR012	Med	\$ 11.25
--------------	--------	-----	----------



Whitetail Deer

JB024	Med	\$ 46.00
-------	-----	----------

Relaxed Tongues

TF024		\$ 15.55
-------	--	----------



Whitetail Deer ( Half set )

JBH024	Med	\$ 30.30
--------	-----	----------

Relaxed Tongues

TH024		\$ 9.15
-------	--	---------



Relaxed      Snarling

Coyote

TR012	\$ 9.35
TS012	\$ 9.35





# Mohr Jaw Sets Base Color

Attention : All jawsets come complete come with tongues.



Elk

JB043	Small	\$ 62.05
-------	-------	----------

JB019	Large	\$ 62.05
-------	-------	----------



Relaxed Tongues

T043	Small	\$ 19.25
------	-------	----------

T019	Large	\$ 19.25
------	-------	----------



Elk (Half Set)

JBH019	Med	\$ 34.55
--------	-----	----------

TH019		\$ 9.90
-------	--	---------

MOHR JAWSETS & ADHESIVE



Red Fox

JB013	Med	\$ 25.50
-------	-----	----------



Red Fox (Jaw/Throat)

JBT013	Med	\$ 29.95
--------	-----	----------



Gray Fox

JB014	Med	\$ 23.35
-------	-----	----------

Snarling Tongue	TS014	Med	\$ 8.00
Relax Tongue	TR014	Med	\$ 8.00

Snarling Tongues

Snarling Tongue	TS013	Med	\$ 8.15
Relax Tongue	TR013	Med	\$ 8.15

Jaw Juice  
Adhesive

Great product used to glue jawsets in place. Retains a wet look. Paintable when fully cured. Stronger than Critterbreath. Sets up in 15 minutes. Fully cured in 24 hours.



Inspection Mirror

Great for looking in the mouth to work apoxie sculpt.

Code	Price
IM	\$ 2.25



Raccoon

JB017	Med	\$ 25.44
-------	-----	----------

Snarling Tongues

TS017	Med	\$ 8.00
-------	-----	---------

Code	Tube	Price
MJJ	3.7 oz	\$ 8.25

# Mohrs Jaw Sets Natural Color

Attention: All jawsets come complete with tongues.

We have added the Slimline Series jawsets to go with the Cast Lip and Nose system forms.



Bobcat

JN007	Med	\$ 38.00
-------	-----	----------

JN008	Large	\$ 39.55
-------	-------	----------

Bobcat Tongues

Snarling Tongue	TS007	Med	\$ 7.90
Relax Tongue	TR007	Med	\$ 7.90

Snarling Tongue	TS008	Large	\$ 8.15
Relax Tongue	TR008	Large	\$ 8.15



Bobcat ( jaw/throat )  
SlimLine Series

JNT007	Med	\$ 45.90
--------	-----	----------

Snarling Tongues

TTS007	Med	\$ 9.15
--------	-----	---------



Bobcat ( jaw/throat )  
Hinged  
SlimLine Series

JNT008H	Large	\$ 47.25
---------	-------	----------

Snarling Tongues

TTS008	Large	\$ 9.35
--------	-------	---------



Coyote

JN012	Med	\$ 45.15
-------	-----	----------

Coyote Tongues

TR012	Med	\$ 9.35
TS012	Med	\$ 9.35



Coyote ( Jaw/Throat )  
SlimLine Series

JNT012	Med	\$ 53.15
--------	-----	----------

Relax Tongue	TTR012	Med	\$ 11.25
--------------	--------	-----	----------



Coyote ( Jaw/Throat )  
Howling  
SlimLine Series

JNT012H	Med	\$ 53.20
---------	-----	----------

Snarling Tongue	TTSS012	Med	\$ 11.25
Relax Tongue	TR012	Med	\$ 9.35



Whitetail Deer

JN024	Med	\$ 67.15
-------	-----	----------

Relaxed Tongues

TF024		\$ 15.55
-------	--	----------



Whitetail Deer ( Halfset )

JNH024	Med	\$ 43.55
--------	-----	----------

Relaxed Tongues

TH024		\$ 9.15
-------	--	---------







# Mohr's Jaw Sets Natural Color

Attention : All jawsets come complete come with tongues.

Mohr's Jawsets work well in Ozark small game bodies and Noonies small game bodies. The realistic life like jaws sets brings your mounts to life like.

MOHR JAWSETS NATURAL COLOR



Elk

JN043	Small	\$ 103.75
-------	-------	-----------

JN019	Large	\$ 103.75
-------	-------	-----------



Elk Relaxed Tongues

T043	Small	\$ 19.25
------	-------	----------

T019	Large	\$ 19.25
------	-------	----------



Elk ( Half Set )

JNH019	Med	\$ 60.70
--------	-----	----------

TH019		\$ 9.90
-------	--	---------



Red Fox

JN013	Med	\$ 39.20
-------	-----	----------



Red Fox ( Jaw/Throat )  
SlimLine Series

JNT013	Med	\$ 43.80
--------	-----	----------



Gray Fox

JN014	Med	\$ 33.80
-------	-----	----------

Red Fox Tongues

Snarling Tongue	TS013	Med	\$ 8.15
Relax Tongue	TR013	Med	\$ 8.15

Gray Fox Tongues

Snarling Tongue	TS014	Med	\$ 8.00
Relax Tongue	TR014	Med	\$ 8.00



Raccoon

JN017	Med	\$ 35.95
-------	-----	----------

Snarling Tongues

TS017	Med	\$ 8.00
-------	-----	---------



Reproduction small  
game noses see page 57

# Mammals



Mounted by  
Brian Harness  
Harrison, AR



# Bobcat



CBC-1



CBC-17



CBC-21

Forms by David Ellzey



BC-1-CM



CBC-20



BC-2-CM



BC-2-OM



BC-1-OM

BC3-2105A



Van Dyke Bobcat Eyes



Code	Size	Price
VDBC14	14 mm	\$ 10.15
VDBC16	16 mm	\$ 10.70
VDBC18	18 mm	\$ 11.20
VDBC20	20 mm	\$ 11.30



Tohickon 180 Bobcat Eyes



Code	Size	Price
T180BC12	12 mm	\$ 15.00
T180BC14	14 mm	\$ 15.00
T180BC16	16 mm	\$ 16.10
T180BC18	18 mm	\$ 16.10



Mohr Bobcat Jaw Sets See Page 43



See Pages 54  
for Ozark Woods  
Bobcat Forms

FORM	SIZE "A" x "B" x "C"	POSITION	EYE	JAW SIZE	PRICE
BC-1-CM	1 3/4 x 16 x 28	Walking LT - CM		-----	\$ 66.50
BC-1-OM	1 3/4 x 16 x 28	Walking LT - OM			\$ 66.50
BC-2-CM	1 7/8 x 18 1/2 x 30	Crouched LT - CM		-----	\$ 66.50
BC-2-OM	1 7/8 x 18 1/2 x 30	Crouched LT - OM			\$ 66.50
CBC-1	1 1/2 x 14 1/2 x 23	Stalking LT - OM			\$ 85.00
CBC-1A	1 1/2 x 12 1/2 x 20	Stalking LT - OM			\$ 85.00
CBC-7	1 3/4 x 15 1/2 x 26	Stalking LT - OM			\$ 85.00
CBC-8	1 3/4 x 16 3/4 x 28	Stalking LT - OM			\$ 85.00
CBC-9	2 x 18 x 30	Stalking LT - OM			\$ 85.00
CBC-6	2 x 21 x 33	Stalking LT - OM			\$ 85.00
CBC-17	1 1/2 x 15 3/4 x 26	Walking RT - OM			\$ 85.00
CBC-21	1 1/2 x 16 x 28	Laying Down LT - CM		-----	\$ 85.00
CBC-20	1 1/2 x 17 x 27	Stepping Down RT - CM		-----	\$ 85.00
CBC-22	1 1/2 x 17 x 27	Stepping Down RT - OM			\$ 85.00

# While supplies last Discontinued Coyote, Bobcat and Gray Fox



CY3-2200A



CY3-2205A

## Coyote

FORM	SIZE "A" x "B" x "C"	POSITION	EYE	JAW SIZE	PRICE
CY3-2200A	3 3/4 x 19 x 33	Laying Down RT - CM	18 mm	-----	\$ 125.00
CY3-2201A	4 x 21 x 36	Laying Down RT - CM	18 mm	-----	\$ 131.00
CY3-2202A	4 1/4 x 23 x 38	Laying Down RT - CM	20 mm	-----	\$ 135.00
CY3-2205A	4 1/4 x 23 1/4 x 38	Standing on Stump RT - CM	20 mm	-----	\$ 135.00



BC3-2105A



BC3-2103A

## Bobcat

FORM	SIZE "A" x "B" x "C"	POSITION	EYE	JAW SIZE	PRICE
BC3-2103A	1 3/4 x 18 x 30	Walking LT - OM	18 mm	-----	\$ 90.00
BC3-2105A	1 1/2 x 16 1/2 x 26	Walking LT - OM	18 mm	-----	\$ 90.00



## Gray Fox



FORM	SIZE "A" x "B" x "C"	POSITION	EYE	JAW SIZE	PRICE
FXG-2300A	2 x 13 x 21	Laying Down RT - CM	14 mm	-----	\$71.00
FXG-2302A	2 1/2 x 14 3/4 x 24 1/2	Laying Down RT - CM	16 mm	-----	\$75.00



# Otter & Raccoon



OT-3



RC-5



RC-1

Form by David Ellzey



RC-9



See Pages 56  
for Ozark Woods  
Raccoon Forms



RC-1 Ellzey



RC-10



RC-25

Otter & Raccoon Eyes



RACCOON & OTTER

FORM	SIZE "A" x "B" x "C"	POSITION	EYE	JAW SIZE	PRICE
RC-1A	1 3/4 x 16 x 19 1/2	Standing RT - CM	14 mm	-----	\$ 70.00
RC-1B	2 x 17 1/2 x 21 1/2	Standing RT - CM	14 mm	-----	\$ 70.00
RC-2	1 1/2 x 9 x 15	Climbing RT - CM	12 mm	-----	\$ 70.00
RC-3	1 3/4 x 12 x 18	Climbing RT - CM	14 mm	-----	\$ 70.00
RC-4	1 3/4 x 12 x 20	Climbing LT - CM	14 mm	-----	\$ 70.00
RC-5	2 x 15 1/2 x 22	Climbing LT - CM	14 mm	-----	\$ 70.00
RC-5A	2 x 15 1/2 x 22	Climbing LT - OM	14 mm	Med.	\$ 70.00
RC-6	2 x 18 x 24	Climbing RT - CM	14 mm	-----	\$ 70.00
RC-7	2 1/4 x 21 x 26	Climbing RT - CM	14 mm	-----	\$ 70.00
RC-8	2 1/4 x 16 x 21	Sit Up Fighting RT - OM	14 mm	Med.	\$ 70.00
RC-9	2 1/4 x 17 1/2 x 23	Sit Up Fighting RT - OM	14 mm	Med.	\$ 70.00
RC-10	2 x 16 x 20	Walking Paw Up RT - OM	14 mm	Med.	\$ 70.00
RC-20	2 x 17 x 22	Washing Food STR - CM	14 mm	-----	\$ 70.00
RC-25	1 3/4 x 12 3/4 x 17 1/2	Walking RT - CM	14 mm	-----	\$ 70.00
RC-1 E	1 3/4 x 11 x 17	Climbing RT - CM	14 mm	-----	\$ 51.85
OT-3	1 1/2 x 18 1/2 x 28	Paw Raised LT - CM	12 mm	-----	\$ 75.00

Code	Size	Price
VDRC12	12 mm	\$ 8.70
VDRC14	14 mm	\$ 8.70



165 Concave

Code	Size	Price
T165RC10	10 mm	\$ 11.90
T165RC12	12 mm	\$ 12.90
T165RC14	14 mm	\$ 12.90
T165RC16	16 mm	\$ 12.90

Jaw Sets  
See Page 43-44



# Gray Fox

Forms by DixieLand



DIX-CGF-0



DIX-GF-7



DIX-GF-8



DIX-GF-10



Form by David Ellzey



GF-1



Code	Price
WHarold	\$ 25.95

FORM	SIZE "A" x "B" x "C"	POSITION	EYE	JAW SIZE	PRICE
GF-1 Ellzey	2 1/4 x 12 1/2 x 24	Laying Down RT - CM	14 mm	-----	\$ 60.45
DIX-CGF-0	2 x 11 x 21	Stndg Paw Raised LT - CM	14 mm	-----	\$ 75.50
DIX-GF-6	2 1/2 x 14 x 25	Standing RT - CM	14 mm	-----	\$ 75.50
DIX-GF-7	2 1/4 x 14 x 23	Sitting Paw Raised Str - CM	14 mm	-----	\$ 75.50
DIX-GF-8	2 1/2 x 16 x 26	Running STR - CM	14 mm	-----	\$ 75.50
DIX-GF-10	2 x 14 x 23	Stnd Looking Bk LT - CM	14 mm	-----	\$ 75.50
DIX-GF-12	2 1/2 x 14 x 25	Digging LT - CM	14 mm	-----	\$ 75.50
DIX-GF-13	2 1/4 x 14 x 24	Sitting Scratching LT - CM	14 mm	-----	\$ 75.50



Gray Fox



180 Premium  
Gray Fox



Code	Size	Price
T180GF14	14 mm	\$ 15.00
T180GF16	16 mm	\$ 16.10
T180GF18	18 mm	\$ 16.10



GrayFox

Code	Size	Price
VDGF14	14 mm	\$ 10.15
VDGF16	16 mm	\$ 10.70
VDGF18	18 mm	\$ 11.20

Size	Complete	Price	Snarling	Price	Relaxed	Price
Medium	JB014	\$ 23.35	TS014	\$ 8.00	TR014	\$ 8.00
Medium	JN014	\$ 33.80	TS014	\$ 8.00	TR014	\$ 8.00



See Pages 55-56  
for Ozark Woods  
Gray Fox Forms





# Ozark Woods

by Brian Harness



Best in World 2009



# Bobcats bodies by:



BC-1622 BC-1633



BC-1333RT



BC-1322RT Rock #9



BC-1333 BC-1355 BC-1322 Rock #5



BC-1422 BC-1433 BC-1455



BC-1233 Rock #4



BC-1522 BC-1550



BC-1770



BC-1122 BC-1133  
BC-1155 BC-1166  
Rock #5



See Pages 66,69 and  
75 for Bobcat eyes.

FORM	SIZE "A" x "B" x "C"	POSITION	EYE	JAW SIZE	PRICE
BC-1122 - RT	1 1/2 x 14 x 27 1/2	Walking Up - CM	18 mm	-----	\$ 91.35
BC-1133 - RT	1 3/4 x 15 x 29 1/4	Walking Up - CM	18 mm	-----	\$ 93.65
BC-1133 - OM	1 3/4 x 15 x 29 1/4	Walking Up - OM	18 mm	JBT007	\$ 107.75
BC-1155 - RT	1 3/4 x 19 x 32	Walking Up - CM	18 mm	-----	\$ 96.05
BC-1166 - RT	1 7/8 x 18 x 34	Walking Up - CM	18 mm	-----	\$ 99.55
BC-1233 - LT	1 5/8 x 17 1/2 x 30	Lying Down - CM	18 mm	-----	\$ 93.65
BC-1233 - OM	1 5/8 x 17 1/2 x 30	Lying Down - OM	18 mm	JBT007	\$ 104.45
BC-1322 - LT	1 1/2 x 14 x 27	Walking Down - CM	16 mm	-----	\$ 91.35
BC-1322 - RT	1 1/2 x 14 x 27	Walking Down RT-CM	16mm	-----	\$ 91.35
BC-1333 - LT	1 5/8 x 17 x 29	Walking Down LT - CM	18 mm	-----	\$ 93.65
BC-1333 - RT	1 5/8 x 17 x 29	Walking down RT-CM	18mm	-----	\$ 93.65
BC-1333 - OM	1 5/8 x 17 x 29	Walking Down - OM	18 mm	JBT007	\$ 107.75
BC-1355 - LT	1 3/4 x 18 x 31 1/2	Walking Down - CM	20 mm	-----	\$ 96.05
BC-1422 - RT	1 1/2 x 15 1/2 x 27 1/2	Walking - CM	18 mm	-----	\$ 91.35
BC-1433 - RT	1 5/8 x 17 1/2 x 29 1/2	Walking - CM	18 mm	-----	\$ 93.65
BC-1455 - RT	1 3/4 x 18 1/2 x 31	Walking - CM	20 mm	-----	\$ 96.05
BC-1522 - LE	1 1/2 x 15 x 28	Leaping - CM	18 mm	-----	\$ 94.85
BC-1550 - LE	2 x 17 x 32	Leaping - CM	20 mm	-----	\$ 94.85
BC-1622 - RT	1 1/2 x 16 x 28	On Guard - CM	18 mm	-----	\$ 97.50
BC-1633 - RT	1 5/8 x 16 1/2 x 30 1/2	On Guard - CM	18 mm	-----	\$ 99.55
BC-1770 - RT	1 3/4 x 16 1/4 x 29 1/4	Climbing - CM	18 mm	-----	\$ 96.05

## Mammal Change-Out Heads



Description	Price
Red Fox CHR44 2-3/4" E-N	\$ 14.85
Coyote CHC88 3-3/4" E-N	\$ 16.30
Coyote CHC99 4-1/4" E-N	\$ 16.30
Coyote CHC99OM 4-1/4" E-N	\$ 40.10
Lynx CHL81 1-3/4" E-N	\$ 16.30

Description	Price
Bobcat CHB22 1-1/2" E-N	\$ 14.85
Bobcat CHB33 1-5/8" E-N	\$ 14.85
Bobcat CHB55 1-3/4" E-N	\$ 14.85
Bobcat CHB66 1-7/8" E-N	\$ 14.85
Bobcat CHB33OM 1-5/8" E-N	\$ 29.55
Gray Fox CHG31 2-1/4" E-N	\$ 14.85





# Mammals by: Ozark Woods



GF-3330 Rock #5



GF-3110 Rock #4



GF-3220 Rock #3



RF-2644 Rock #7



RF-2344 Rock #5



RF-2552



RC-4110 Rock #3



RC-4212



MK-6110 Rock #2 MK-6122



LX-8144 Rock #5



CY-6144 Rock #5



FR-7110

OZARK MAMMALS



# Mammals by: Ozark Woods



SK-9117

Rock #2



BCP 22 BCP 33 BCP 55



CYP 88

CYP 99



FRP 130



RCP 101



GFP 77

FORM	SIZE "A" x "B" x "C"	POSITION	EYE	JAW SIZE	PRICE
CY-6477	3 3/4 x 20 x 33 1/2	Walking - CM	18 mm	-----	\$ 118.90
CY-6144	4 1/4 x 21 x 37	Walking Up - CM	18 mm	-----	\$ 118.90
FR-7110	2 x 13 1/2 x 27	Walking Up - CM	10 mm	-----	\$ 86.30
GF-3110	2 1/4 x 13 1/2 x 24 3/4	Walking Up - CM	14 mm	-----	\$ 86.10
GF-3220	2 1/4 x 13 x 24 1/2	Lying Down - CM	14 mm	-----	\$ 88.30
GF-3330	2 1/4 x 13 1/2 x 24 1/2	Walking Down - CM	14 mm	-----	\$ 86.20
LX-8144	1 3/4 x 15 1/2 x 33	Walking Down - CM	20 mm	-----	\$ 106.25
MK-6110	1 x 10 x 18	Walking Up - CM	8 mm	-----	\$ 58.75
MK-6122	1 x 9 x 17	Walking Up - CM	8 mm	-----	\$ 58.75
RC-4110	2 1/8 x 21 1/2 x 25 1/2	Walking Down - CM	12 mm	-----	\$ 87.40
RC-4212	2 1/8 x 16 1/2 x 21	Lying on Limb - CM	10 mm	-----	\$ 84.90
RF-2344	2 3/4 x 13 1/4 x 26	Walking Down - CM	14 mm	-----	\$ 86.20
RF-2552	3 x 13 x 25 1/2	Jumping - OM	14 mm	-----	\$ 94.85
RF-2644	2 3/4 x 13 1/2 x 26 1/2	Walking RT - CM	14 mm	-----	\$ 86.20
SK-9117	1 3/8 x 12 x 13 3/4	Walking Up - CM	10 mm	-----	\$ 68.50
BCP 22	1 1/2 x 9 1/2	Bobcat Pedestal	16 mm	-----	\$ 32.50
BCP 33	1 5/8 x 10 1/2	Bobcat Pedestal	18 mm	-----	\$ 32.50
BCP 55	1 3/4 x 12	Bobcat Pedestal	20 mm	-----	\$ 32.50
CYP 88	3 3/4 x 10	Coyote Pedestal	16 mm	-----	\$ 38.95
CYP 99	4 1/4 x 11 3/4	Coyote Pedestal	18 mm	-----	\$ 38.95
GFP 77	2 1/4 x 8	Gray Fox Pedestal	14 mm	-----	\$ 29.15
RFP 130	2 3/4 x 8	Red Fox Pedestal	14 mm	-----	\$ 29.15
RCP 101	2 3/8 x 10	Raccoon Pedestal	12 mm	-----	\$ 29.15



# Wall Pedestals



FORM	N x E	Cir	EYE	PRICE
CYWP - 88	3 3/4"	10"	16 mm	\$ 39.00
CYWP - 99	4 1/4"	11 3/4"	18 mm	\$ 39.00
BCWP - 33	1 5/8"	15"	18 mm	\$ 38.10

All open mouths are  
Mohr Jawset ready!



CYRS99



BCRS33OM



Refer to page 43-44 For Jawsets



CYRS99OM



RFRS44OM

## Rug Shells

FORM	SIZE "A" x "B" x "C"	POSITION	EYE	JAW SIZE	PRICE
BCRS33OM	1 5/8"	Rug Shell - OM	18 mm	JBT007 / JNT007	\$ 42.40
CYRS99	4 1/2"	Rug Shell - CM	18 mm		\$ 33.95
CYRS99OM	4 1/2"	Rug Shell - OM	18 mm	JBT012 / JNT012	\$ 53.95
RFRS44OM	2 3/4"	Rug Shell - OM	14 mm	JBT013 / JNT013	\$ 42.40

## Reproduction Noses



W x H are in millimeters



Species	W x H	Price
Coyote - L	29 x 27	\$ 14.15
Coyote - XL	32 x 27	\$ 14.15
Fox, Gray - M	15 x 14.5	\$ 14.15
Fox, Gray - L	16 x 15.5	\$ 14.15
Fox, Red - M	18 x 17	\$ 14.15
Raccoon - S	21.5 x 17	\$ 14.15
Raccoon - M	22.5 x 17.5	\$ 14.15
Raccoon - L	23.5 x 18	\$ 14.15

Species	W x H	Price
Bobcat - XS	18.5 x 17	\$ 14.15
Bobcat - S	19.5 x 18	\$ 14.15
Bobcat - M	20.5 x 18	\$ 14.15
Bobcat - L	21.5 x 19	\$ 14.15
Bobcat - XL	23 x 20	\$ 14.15
Coyote - XS	22 x 22	\$ 14.15
Coyote - S	25 x 25	\$ 14.15
Coyote - M	27 x 27	\$ 14.15

## Bobcat Nose Paint Kit



Have you struggled with getting the right color on a bobcat nose? Using Ozark Woods' repro noses and this new paint kit, you can achieve that perfect color. It comes with colors for the pink and orange color phase of a bobcat nose. Comes complete with a high quality sable brush, and paint. Paint dries in about 2-3 hours. Instructions included.

Code	Price
BCPK	\$ 19.90





## Small Mammals Earliners and Tails



Bobcat



Coyote



Gray Fox



Raccoon



Fisher

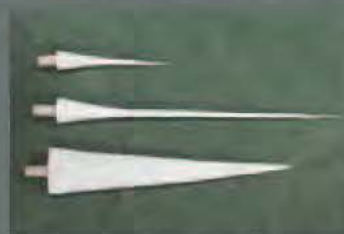


Red Fox

Code	Mammals	Size	Price	Code	Mammals	Size	Price
BCELS	Bobcat	Small	\$ 9.75	RFELM	Red Fox	Med	\$ 10.30
BCELM	Bobcat	Med	\$ 9.75	RFELLB	Red Fox LB	---	\$ 14.15
BCELL	Bobcat	Large	\$ 11.60	GFEL	Gray Fox	---	\$ 9.70
				CEL	Coyote	---	\$ 11.60
RCEL	Raccoon	---	\$ 8.80	MFEL	M Fisher	---	\$ 8.80

### Tails

Code	Mammal	Price
BCTAIL	Bobcat	\$ 8.35
CETAIL	Coyote	\$ 8.35
GFTAIL	Gray Fox	\$ 8.35
RFTAIL	Red Fox	\$ 8.35
RCTAIL	Raccoon	\$ 8.35



## Krowtann 2000 and Special Whitetail Deer Formula

This is a true tan that is very simple to use. Simply rough flesh the skin, place the skin in the Krowtann mixture for 3 - 4 days, then neutralize and do your final fleshing. The skin is now ready to mount. This tan has a good stretch, very little shrinkage, good hair setting ability, and very easy to re-hydrate for correcting flaws. Complete instructions included. "Krowtann 2000" - Small and Large Mammals, Bears, Hogs, and anything else. "Special Whitetail" - Deer, Elk and similar.

### Krowtann 2000

#### For Large & Small mammals.

This is a true tan that is very easy to use on any animal from bobcats to bear to alligators!

Directions on the bottle.

KT 2000 Qt. - \$33.00

KT 2000 Gal. - \$97.00



### Krow - Oil

This is a very good oil that works very well in conjunction with "Krowtann 2000". If you are wanting to do rug or flat tanning with Krowtann 2000, we highly recommend using "Krow-Oil". Good results can be obtained without any breaking for your rugs or wall hangings. Krow-Oil can also be applied to a cape or skin to make the skin to give even more stretch and to make the skin even more soft. Complete instructions are included.

KO Qt. - \$20.75

### Krowtann Special Deer Formula

#### For deer, elk & similar game.

This is a true tan that is very easy to use on any animal from bobcats to bear to alligators!

Directions on the bottle.

KWTF Qt. - \$33.00

KWTF Gal. - \$97.00



### Krow - Soap

This is the finest shampoo for your mounts that you can get. This will leave your small mammal mounts with full and extra soft hair. Once you have shampooed a mount with "Krow-Soap" and see the difference that it makes, we don't believe you will ever mount another small mammal without it. If you don't believe it is that good, try it on your own hair.

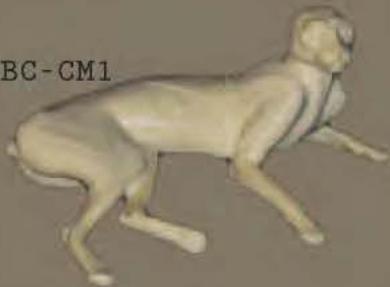
KS Qt. - \$20.75



# Bobcats by: Noonies



NBC - CM1



NBC - CM2



NBC - CM3



NBC - CM4



NBC - CM7



NBC - CM10



NBC - CM13



NBC - CM17



NBC - CM18



## Bobcat Jawsets

Description	Size	Complete	Price	Snarling	Price	Relaxed	Price
Bobcat ( Base Color )	Medium	JB007	\$ 24.55	TS007	\$ 7.90	TR007	\$ 7.90
Bobcat ( Base Color )	Med.- Jaw / Throat	JBT007	\$ 33.05	TTS007	\$ 9.15		
Bobcat ( Base Color )	Large	JB008	\$25.65	TS008	\$ 8.15	TR008	\$ 8.15
Bobcat ( Base Color )	Large (Jaw / throat hinge)	JBT008H	\$ 35.10	TTS008	\$ 9.35		
Bobcat ( Natural Color )	Medium	JN007	\$ 38.00	TS007	\$ 7.90	TR007	\$ 7.90
Bobcat ( Natural Color )	Med - Jaw / Throat	JNT007	\$ 45.90	TTS007	\$ 9.15		
Bobcat ( Natural Color )	Large	JN008	\$ 39.55	TS008	\$ 8.15	TR008	\$ 8.15
Bobcat ( Natural Color )	Large (Jaw / Throat hinged)	JNT008H	\$ 47.25	TTS008	\$ 9.35		

# Bobcats by: Noonies

NBC-OM2



NBC-OM5



NBC-OM7



NBC-OM13



NBC-OM17



NBC-OM18

All open mouths are  
Mohr Jawset ready!

FORM	SIZE "A" x "B" x "C"	POSITION	EYE	JAW SIZE	PRICE
NBC-CM1	1 1/2 x 15 1/4 x 27	Lying Down - CM	16 mm	-----	\$102.00
NBC-CM2	1 1/2 x 19 x 31	Stalking - CM	18 mm	-----	\$ 102.00
NBC-OM2	1 1/2 x 19 x 31	Stalking - OM	18 mm	Large	\$ 110.00
NBC-CM3	1 1/2 x 19 x 32	High Back - CM	18 mm	-----	\$ 102.00
NBC-CM4	1 5/8 x 19 x 32	Laying Down - CM	18 mm	-----	\$ 102.00
NBC-OM5	1 1/2 x 18 x 29 1/2	Standing LT - OM	18 mm	Medium	\$ 110.00
NBC-CM7	1 3/8 x 15 x 26	Sitting - CM	16 mm	-----	\$ 102.00
NBC-OM7	1 3/8 x 15 x 26	Sitting - OM	16 mm	Medium	\$ 110.00
NBC-CM10	1 5/8 x 19 x 33	Waking LT - CM	18 mm	-----	\$ 102.00
NBC-CM13	1 3/8 x 14 x 27	Stalking Sneak - CM	16 mm	-----	\$ 102.00
NBC-OM13	1 3/8 x 14 x 27	Stalking Sneak - OM	16 mm	Medium	\$ 110.00
NBC-CM17	1 3/8 x 16 x 30	Jumping - CM	18 mm	-----	\$ 102.00
NBC-OM17	1 3/8 x 16 x 30	Jumping - OM	18 mm	Medium	\$ 110.00
NBC-CM18	1 1/2 x 18 1/2 x 31	Sitting LT - CM	18 mm	-----	\$ 102.00
NBC-OM18	1 1/2 x 18 1/2 x 31	Sitting LT - OM	18 mm	Medium	\$ 110.00



# Coyotes by: Noonies



NC - CM2



NC - OM2



NC - OM3



NCSH - OM3



NCSH - CM1



NCSH - OM2

FORM	SIZE "A" x "B" x "C"	POSITION	EYE	JAW SIZE	PRICE
NC- CM2	3 3/4 X 20 X 35	Walking Head Up LT-CM	20 mm	———	\$ 136.00
NC-OM2	3 3/4 X 20 X 35	Walking Headup LT-OM	20 mm	Large	\$ 144.00
NC-OM3	3 3/4 X 20 X 35	Walking Howling LT-OM	20 mm	Large	\$ 144.00
NCSH-CM1	1 1/2 x 19 x 31	Shoulder Head Down LT-CM	20 mm	———	\$ 56.70
NCSH-OM2	1 5/8 x 19 x 32	Shoulder Head Up LT-OM	20 mm	Large	\$ 59.70
NCSH-OM3	1 1/2 x 18 x 29 1/2	Shoulder Howling LT-OM	20 mm	Large	\$ 59.70



Coyote Jaw Set

All open mouths are  
Mohr Jawset ready!



170 Premium  
Coyote



Coyote

Size	Complete	Price	Snarling	Price	Relaxed	Price
Medium	JB012	\$ 26.50	———	———	TR012	\$ 8.40
Med.- Jaw / Throat	JBT012	\$ 33.85	TS012	\$ 8.40	TTR012	\$ 10.10
Med.- Jaw / Throat / Howling	JBTH012	\$ 33.85	TSS012	\$ 10.10	TR012	\$ 10.10
Medium	JN012	\$ 39.70	TS012	\$ 8.40	TR012	\$ 8.40
Med - Jaw / Throat	JNT012	\$ 47.80	TTSS012	\$ 10.10	TTR012	\$ 10.10
Med - Jaw Throat / Howling	JNT012H	\$ 47.80	TTH012	\$ 10.10		

Code	Size	Price
T170CE16	16 mm	\$ 15.40
T170CE18	18 mm	\$ 16.00

Code	Size	Price
VDC16	16 mm	\$ 10.70
VDC18	18 mm	\$ 11.20
VDC20	20 mm	\$ 11.30

# Foxes by: Noonies



NGF - CM2



NGF - CM5



NGF - CM6



NGF - OM4



NGF - CM5



NGF - OM6

All open mouths are  
Mohr Jawset ready!



NRF - CM1



NGF - OM5

FORM	SIZE "A" x "B" x "C"	POSITION	EYE	JAW SIZE	PRICE
NGF-CM2	2 x 12 1/4 x 25	Laying Down LT - CM	14 mm	-----	\$ 96.00
NGF-OM4	2 x 12 1/4 x 24	Jumping - OM	14 mm	Med	\$ 104.00
NGF-CM5	2 x 13 3/4 x 23 3/4	Stepping Up RT - CM	14 mm	-----	\$ 96.00
NGF-OM5	2 x 13 3/4 x 23 3/4	Stepping Up RT - OM	14 mm	Med	\$ 104.00
NGF-CM6	2 x 13 x 24	Walking RT - CM	14 mm	-----	\$ 96.00
NGF-OM6	2 x 13 x 24	Walking RT - OM	14 mm	Med	\$ 104.00
NRF-CM1	2 3/8 x 13 1/2 x 24	Laying on Side RT - CM	16 mm	-----	\$ 96.00



# Squirrel by David Ellzey

JOHN DAVID  
**Ellzey's**  
SQUIRREL  
FORMS

## RUNNING UP

## RUNNING DOWN

FORM	SIZE "B" x "C"	TURN	PRICE
S-93	8 x 12 -OM	LT	\$ 27.35
S-101	8 3/4 x 11 3/4	RT	\$ 27.10
S-102	8 3/4 x 11 3/4	LT	\$ 27.10
S-103	7 1/2 x 11 3/4	LT	\$ 27.10
S-104	7 1/2 x 10 3/4	RT	\$ 26.25
S-106	8 3/4 x 12 3/4	RT	\$ 27.35
S-107	6 1/4 x 10	RT	\$ 26.25
S-108	6 1/4 x 9 1/2	LT	\$ 25.25
S-110	8 3/4 x 12 3/4	LT	\$ 27.35
S-111	6 1/4 x 9	RT	\$ 25.25
S-112	7 1/2 x 11 3/4	RT	\$ 27.10
S-113	6 1/4 x 10 1/2	LT	\$ 26.25
S-114	7 1/2 x 10 3/4	LT	\$ 26.25
S-116	8 3/4 x 12 1/2 OM	LT	\$ 27.35
S-132	6 1/4 x 9 1/2	RT	\$ 25.25
S-135	8 3/4 x 12 1/4	RT	\$ 27.35
S-136	8 x 12 1/4	RT	\$ 27.35
S-137	6 1/2 x 11	RT	\$ 27.10
S-140	6 1/4 x 10	LT	\$ 26.25
S-142	8 3/4 x 12 1/4	LT	\$ 27.35
S-155	9 x 11 1/4	LT	\$ 27.10
S-160	7 1/2 x 11 1/4	RT	\$ 27.10
S-161	7 1/2 x 11 1/4	LT	\$ 27.10
S-231	7 1/2 x 11 1/4	RT	\$ 27.10
S-237	6 x 9	LT	\$ 25.25
S-244	6 3/4 x 10 1/2	RT	\$ 26.25
S-246	7 1/4 x 11	LT	\$ 27.10
S-247	6 1/2 x 11	RT	\$ 27.10
S-284	8 1/2 x 12 3/4	LT	\$ 27.35
S-289	6 x 9 1/4	LT	\$ 25.25

FORM	SIZE "B" x "C"	TURN	PRICE
S-119	6 1/4 x 10	RT	\$ 26.25
S-122	5 1/2 x 9	RT	\$ 25.25
S-123	6 1/4 x 10	RT	\$ 26.25
S-124	6 1/2 x 11	LT	\$ 27.10
S-125	6 1/2 x 11	RT	\$ 27.10
S-126	7 x 11 1/4	LT	\$ 27.10
S-127	7 x 11 1/4	RT	\$ 27.10
S-130	7 1/4 x 12	RT	\$ 27.35
S-131	7 3/4 x 13	LT	\$ 27.70
S-200	6 x 9 3/4	LT	\$ 25.25
S-223	7 1/2 x 12 1/2	RT	\$ 27.35
S-224	4 3/4 x 8	LT	\$ 24.15
S-227	5 x 8 1/2	LT	\$ 24.15
S-229	5 3/4 x 9 1/4	LT	\$ 27.35
S-230	7 3/4 x 12 1/4	LT	\$ 27.35
S-233	8 1/4 x 12 3/4	LT	\$ 27.35
S-234	6 x 9 1/2	LT	\$ 25.25
S-238	6 x 9 1/4	RT	\$ 25.25
S-239	6 1/2 x 9 3/4	LT	\$ 25.25
S-242	6 1/2 x 10 1/4	LT	\$ 26.25
S-248	6 1/2 x 11	LT	\$ 27.10
S-249	7 x 9 3/4	RT	\$ 27.10
S-251	7 1/4 x 11 1/2	RT	\$ 27.10
S-252	6 3/4 x 11 1/2	LT	\$ 27.10
S-260	10 x 12 1/2	RT	\$ 27.35
S-261	10 x 12 1/2	LT	\$ 27.35
S-279	8 1/2 x 12 1/4	RT	\$ 27.35
S-287	8 1/2 x 12	RT	\$ 27.35

S-142

S-135

S-131

S-123

110Wire

Hollow  
Bubble

Code	Size	Price	Code	Size	Price
110B6mm	6 mm	\$ 4.20	110B10mm	10mm	\$ 4.80
110B7mm	7 mm	\$ 4.20	110B11mm	11 mm	\$ 4.80
110B8mm	8 mm	\$ 4.20	110B12mm	12mm	\$ 5.30
110B9mm	9 mm	\$ 4.80	110B14mm	14mm	\$ 6.20

Code	Size	Price
VDBBE8	8 mm	\$ 5.15
VDBBE9	9 mm	\$ 5.15
VDBBE10	10 mm	\$ 5.45
VDBBE11	11 mm	\$ 5.55
VDBBE12	12 mm	\$ 6.05
VDBBE14	14 mm	\$ 6.70

Refer to page  
page 68





## STANDING

FORM	SIZE "B" x "C"	TURN	PRICE
S-60	6 x 9	LT	\$ 25.25
S-61	8 x 10	RT	\$ 26.25
S-62	7 x 11	LT	\$ 27.10
S-63	9 1/4 x 12	RT	\$ 27.35
S-63B	9 1/2 x 12	LT	\$ 27.35
S-64	10 1/4 x 13	RT	\$ 27.70
S-65	11 1/4 x 14	STR	\$ 28.85
S-69	8 1/4 x 12 1/4	LT	\$ 27.35
S-70	7 3/4 x 11 3/4	LT	\$ 27.10
S-71	8 1/2 x 13 1/4	LT	\$ 27.70

## WALKING

FORM	SIZE "B" x "C"	TURN	PRICE
S-73	6 3/4 x 10 1/2	Slight LT	\$ 26.25
S-76	7 1/2 x 11	Slight LT	\$ 27.10
S-77	8 1/2 x 12	Slight RT	\$ 27.35
S-78	8 1/4 x 13	RT	\$ 27.70

## HANGING DEAD

FORM	SIZE "B" x "C"	TURN	PRICE
S-81	6 1/4 x 10	Hanging	\$ 26.25
S-82	7 1/2 x 11	Hanging	\$ 27.10
S-83	8 1/4 x 12	Hanging	\$ 27.35

## STANDING ERECT

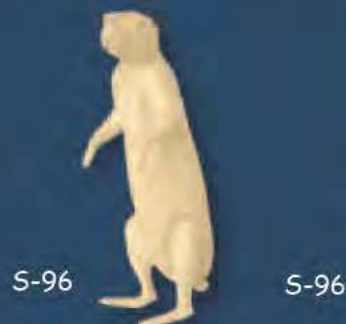
FORM	SIZE "B" x "C"	TURN	PRICE
S-95	5 1/2 x 8	STR	\$ 24.15
S-96	8 x 12	STR	\$ 27.35

## LYING DOWN

FORM	SIZE "B" x "C"	TURN	PRICE
S-94	7 x 11	RT	\$ 27.10
S-97	8 x 12	LT	\$ 27.35

## RUNNING STRAIGHT DOWN

FORM	SIZE "B" x "C"	TURN	PRICE
S-128	6 1/2 x 11 OM	STR	\$ 27.10



Squirrels DVD  
by David Ellzey  
**\$19.95**



Running up, Running down &  
Sitting w/nut

Squirrel Tails Red  
Fox and Gray Fox

Code	Price
SQT	\$ 4.80

Plastic Tail Slipper

Code	Price
PTSlipper	\$ 6.00

Metal Tail Slipper

Code	Price
MTS	\$ 6.00





# Tohickon Glass Eyes



Dark



Medium



## VANTECK 270-PR DARK DEER

Code	Size	Price
T270PRDR30	30 mm	\$ 9.35
T270PRDR32	32 mm	\$ 9.35

The NEW Vantek Series from Tohickon offers a new vantage point for the commercial whitetail taxidermist. A focused product line for whitetail deer it is currently

## VANTECK 270-PR MEDIUM DEER

Code	Size	Price
T270PRME30	30 mm	\$ 9.35
T270PRME32	32 mm	\$ 9.35



Optech



Prerotated

## 400 - OPTECH DEER

Code	Size	Price
T400Optic28	28 mm	\$ 11.40
T400Optic30	30 mm	\$ 11.40
T400Optic32	32 mm	\$ 11.40

This product line has been developed for the commercial taxidermist who doesn't want to sacrifice quality for price.

## 405PR - DEER ( NO LIP )

Code	Size	Price
T405PR28	28 mm	\$ 11.40
T405PR30	30 mm	\$ 11.40
T405PR32	32 mm	\$ 11.40



Prerotated



## 425PR - PREROTATED W/VIENS

Code	Size	Price
T425PRS	28 mm	\$ 13.70
T425PRM	30 mm	\$ 13.70
T425PRL	32 mm	\$ 13.70

Tohickon's Quantum-VX line continues to re-invent glass eyes with standout quality and incredible prices. This series is our 405PR - no lip, pre-rotated - with RED SCLERA VEINS!

## 425OP - W/VIENS DEER

Code	Size	Price
T425OPS28	28 mm	\$ 13.70
T425OPM30	30 mm	\$ 13.70
T425OPL32	32 mm	\$ 13.70



Optech



# Tohickon Glass Eyes

## 650 Joe Meder Deer

With its deep optical quality crystal, hand painted details, and Tohickon's custom engineered glass colors it is among the most beautiful glass eyes ever made specifically for North American deer. These eyes are forward-looking and have an red vining in both the front and the back to allow the most versatility.

Code	Size	Price
JME650-30	30 mm	\$ 20.10
JME650-32	32 mm	\$ 20.10



## 205 DEER MEDIUM COLOR

The 205 Brite-Tech is an entry level deer eye. It is our most economical eye for deer and antelope.

Code	Size	Price
T205LS	28 mm	\$ 7.30
T205LM	30 mm	\$ 7.30
T205LL	32 mm	\$ 7.30

Medium



## 205 DARK DEER/ANTELOPE

The 205 Brite-Tech is an entry level deer eye. It is our most economical eye for deer and antelope.

Code	Size	Price
T205DS	28 mm	\$ 7.30
T205DM	30 mm	\$ 7.30
T205DL	32 mm	\$ 7.30

Dark



## Bobcat

Code	Size	Price
T180BC12	12 mm	\$ 15.00
T180BC14	14 mm	\$ 15.00
T180BC16	16 mm	\$ 16.10
T180BC18	18 mm	\$ 16.10



## Bear Raccoon Otter Beaver

Code	Size	Price
T165RC10	10mm	\$ 11.90
T165RC12	12 mm	\$ 12.90
T165RC14	14 mm	\$ 12.90
T165RC16	16 mm	\$ 12.90



## 250 IQ-S Bobcat

Code	Size	Price
250IQ16	16 mm	\$ 19.60
250IQ18	18 mm	\$ 20.60

IRIS Base  
16 mm 20 mm  
18 mm 22 mm



## Coyote

Code	Size	Price
T170CE16	16 mm	\$ 15.40
T170CE18	18 mm	\$ 16.00



## Red Fox

Code	Size	Price
T180RF14	14 mm	\$ 15.00
T180RF16	16 mm	\$ 16.10
T180RF18	18 mm	\$ 16.10



## Gray Fox

Code	Size	Price
T180GF14	14 mm	\$ 15.00
T180GF16	16 mm	\$ 16.10
T180GF18	18 mm	\$ 16.10





# Tohickon Fish Eyes



135A  
Striper



135A  
Bk Crappie



135A  
Sm Mouth



135A  
Wh Crappie



135A  
Lg Mouth



The 135 Series from Tohickon - the original aspheric fish eye. First called the American Series for its specific design and sizing for American freshwater fish, this product line has been a standard in the industry. Its low profile aspheric shape and cylindrical side design make it very easy to use. There is even a very slight ridge at the perimeter to aid in the sculpture of your sclerotic capsule.



145A  
Striper



145A  
Sm Mouth



145A  
Lg Mouth

## 145A-Spheric Fish Eyes

10 mm	\$ 8.30
12 mm	\$ 8.40
14 mm	\$ 8.90
16 mm	\$ 9.00
18 mm	\$ 9.60
20 mm	\$ 10.30
22 mm	\$ 11.00
24 mm	\$ 11.90

## 135A-Spheric Fish Eyes

10 mm	\$ 9.40
12 mm	\$ 9.90
14 mm	\$ 10.20
16 mm	\$ 10.60
18 mm	\$ 11.20
20 mm	\$ 12.30
22 mm	\$ 12.90
24 mm	\$ 14.30



The 145 Series from Tohickon is a flat back fish eye. Useful for a variety of fish it makes an economical choice in the smaller sizes for freshwater fish and it is currently our only standard offering for saltwater fish. The flat profile and thick optical quality glass bring the metallics and colors to vivid life.

# Flex Eyes Inc.

Flex Eyes Inc. was founded in 1992 by Wayne Cooper and has been producing eyes for your taxidermy needs ever since.

Wayne Cooper used his experience as a world-renowned taxidermist to perfect the most realistic eye on the market. He invented the Flex Eye and has been manufacturing, marketing, and selling them for the past 22 years.

*Est. 1992*



Large  
Mouth



Bream



Small  
Mouth



Crappie/  
Trout



Walleye

Size	Price
10mm	\$ 7.00ea.
12mm	\$ 7.00ea.
14,16,18mm	\$ 7.50ea.
20-22mm	\$ 8.00ea.
24-26mm	\$ 8.50ea.
Walleye	\$ 1.00ea. Extra



# Van Dyke Glass Eyes



The ACV series of Whitetail deer eyes feature an aspheric lens that features mottled circular veining. The coloration is a dark chocolate brown "Dark Deer"

## ACV Deer

Code	Size	Price
ACVS	28 mm	\$ 8.70
ACVM	30 mm	\$ 8.70
ACVL	32 mm	\$ 8.85



The 3CV circular veined Deer or Antelope glass eyes were designed for the commercial taxidermist. The eyes are a concave/convex lens. They have a "Dark Deer" coloration which is a dark chocolate brown.

## 3CV Concave

Code	Size	Price
3CV26	26 mm	\$ 9.25
3CV28	28 mm	\$ 9.75
3CV29	29 mm	\$ 9.90



The Natural Eyes™ from Van Dyke's lives up to it's name. With a forward look lens, soft marbled coloration and a white scleral band which contains realistic red veining at the corners of each eye the true natural appearance come through.

## Natural Deer

Code	Size	Price
VDNDE28	28 mm	\$ 21.00
VDNDE30	30 mm	\$ 21.00
VDNDE32	32 mm	\$ 21.25



Van Dyke's Natural Light or Dark Sheep glass eyes feature a soft marbled veining blended with a light yellow iris color. The white scleral band includes realistic red veins at the corners of each eye. They are anatomically correct and symmetrically identical from the smallest to the largest. This is the absolute most natural eye on the market!

## Natural Sheep Light

Code	Size	Price
VDNSL28	28 mm	\$ 21.00
VDNSL30	30 mm	\$ 21.00

## Natural Sheep Dark

Code	Size	Price
VDNSD	28 mm	\$ 21.00
VDNSD	30 mm	\$ 21.00



Van Dyke's 'Natural' Fallow deer eye features a soft circular veining blended with a sage brown iris color. The white scleral band includes realistic red veins at the corners of each eye. They are anatomically correct and symmetrically identical from the smallest to the largest. This is the absolute most natural eye on the market

## Natural Fallow Deer

Code	Size	Price
VDNFD30	30 mm	\$ 21.00
VDNFD32	32 mm	\$ 21.25



# Van Dyke Glass Eyes

3NV Gray Fox glass eyes are a premium concave/convex lens. The eyes have the natural marbleized veining without the white scleral band.



VDGF14mm	VDGF16mm	VDGF18mm
\$ 10.15	\$ 10.70	\$ 11.20

3NV Bobcat glass eyes have a slot pupil with a green aura and brown base ring and features a yellow brown iris color with detailed veining.



VDBC14mm	VDBC16mm	VDBC18mm	VDBC20mm
\$ 10.15	\$ 10.70	11.20	\$ 11.30

3NV Coyote eye has a round pupil with a medium brown aura and base ring and features a yellow brown iris color with detailed veining



VDC16mm	VDC18mm	VDC20mm
\$ 10.70	\$ 11.20	\$ 11.30

3NV Red Fox eyes have a slit pupil with a dark red brown aura and a black base ring and features a red brown iris color with detailed veining.



VDRF14mm	VDRF16mm	VDRF18mm
\$ 10.15	\$ 10.70	\$ 11.20

Van Dyke's 3NV Boar glass eye has a round pupil with a dark aura and base ring and features a reddish brown iris color with detailed veining



VDBE18mm	VDBE20mm
11.20	\$ 11.30

Boar competition lens has a larger pupil and a corneal bluge and features a beautiful marble veining with true color in both the iris and the scleral.



Code	IRIS	Base	
VDBOC18	18mm	28mm	\$ 22.40

Van Dyke's Competition Reptile glass eyes feature concave/convex lens with black slit pupils with a gold ring and dark brown veins blending around them



VDS6mm	VDS7mm	VDS8mm
\$ 10.30	\$ 10.75	\$ 10.75

The black bubble eyes are produced by experienced German glass blowers with the finest quality black glass. They are an excellent choice for Raccoon, Skunk, Squirrels or Opossums



8,9mm	10mm	11mm	12mm	14mm
\$ 5.85	\$ 5.85	\$ 6.25	6.35	\$ 7.65

Van Dyke's 3NV Raccoon eyes have a round pupil with a dark aura and base ring and features a grey/black iris color with detailed veining.



VDRC12mm	VDRC14mm	VDRCA12mm
\$ 9.90	\$ 10.15	\$ 10.15

Van Dyke's 3NV Bear This eye has a round pupil with a dark aura and base ring and features a reddish brown iris color with detailed veining.



VDBEAR16mm
\$ 10.70



# Van Dyke Glass Bird Eyes

The eyes are a flat backed lens with a naturally indented standard size pupil.

Red



Straw



Yellow



Black



Brown



Hazel



## No Wire

Code	Size	Price
VDBENW6	6,7,8 mm	\$ 2.65
VDBENW9	9 mm	\$ 2.95
VDBENW11	10,11mm	\$ 2.95
VDBENW12	12 mm	\$ 3.30
VDBENW14	14 mm	\$ 3.55

Flint



Pheasant



## With Wire

Code	Size	Price
VDBE6	6,7,8 mm	\$ 3.10
VDBE9	9 mm	\$ 3.30
VDBE11	10,11mm	\$ 3.45
VDBE12	12 mm	\$ 3.85
VDBE14	14 mm	\$ 4.05

Code	Size	Price
VDNWF9	9 mm	\$ 4.40
VDNWF10	10mm	\$ 4.65

Code	Size	Price
VDPH-SNW11	11 mm	\$ 2.65



# Bird Eyes 110 on wire

These eyes come in a variety of colors and sizes for most birds. The wires can be clipped off and discarded or simply cut to length to aid in the mounting process.

## Squirrel or Duck

Brown



Red



Yellow



115 Albino



120 Wire Pheasant



Code	Size	Price	Code	Size	Price
110B6	6 mm	\$ 4.20	110B10	10 mm	\$ 4.80
110B7	7 mm	\$ 4.20	110B11	11 mm	\$ 4.80
110B8	8 mm	\$ 4.20	110B12	12 mm	\$ 5.30
110B9	9 mm	\$ 4.80	110B14	14 mm	\$ 6.20

Code	11 mm
115TA11	\$ 8.40

Code	11 mm
120P	\$ 6.90

Refer to page 69 for size and correct colors.

# Competition Flex Birds Eyes by Wayne Cooper

Refer to Page 81 for more duck eyes available.

Can. Goose  
Flex-Turkey



Wood Duck  
(Male)



Wood Duck  
(Female)



Red Head  
(Male)



Genral  
Purpose



Pheasant  
(Male)



Flex-T
\$ 7.00

Flex-WDM
\$ 6.50

Flex-WDF
\$ 6.50

Flex-RHD
\$ 6.50

Flex-Gen
\$ 6.50

Flex-Ph
\$ 6.50



# Water Fowl Eye Chart

Species	Size	Color
Black Duck	11 mm	Dk. Brown
Brant	9 - 10 mm	Dk. Brown
Bufflehead	7 - 10 mm	Dk. Brown
Canvasback	9 - 10 mm	Red
Cavasback F.	8 - 9 mm	Brown
Eider-Comon	10 mm	Dk.Brown
Eider-King	12 mm	Dk.Brown
Eider-Spect	11 mm	Blue
Eider-Stellars	11 mm	Dk.Brown
Gadwall	8 - 10 mm	Dk.Brown
Goldeneye Barrows	9 mm	Pale Yellow
Goldeneye Common	9 mm	Yellow
Goose Canda	10 - 12 mm	Dk.Brown
Goose Snow	12 mm	Dk.Brown
Loon-Comm	12 mm	Red
Mallard	9-10 mm	Brown
Mallard F.	9-10 mm	Brown
Merganser Common	9-10 mm	Brown
Merganser Common F.	9-10 mm	Brown
Merganser Hooded	9 mm	Yellow
Merganser Hooded F.	8 - 9 mm	Brown
Northern Shoveler	8 - 9mm	Yellow
Northern Shoveler F.	8 - 9 mm	Hazel
Old Squaw	9 mm	Hazel
Pintail	8 - 9 mm	Dk. Brown
Redhead Duck	9 -10mm	Straw
Red Head F	9 mm	Hazel/Brown
Ringneck	8 - 10 mm	Straw
Ringneck F.	8 mm	Hazel/Brown
Ross Goose		Dk.Brown
Ruddy	7 mm	Brown
Scaup-Greater	9 mm	Yellow

Species	Size	Color
ScaupLesser	9 mm	Yellow
Scoter-Com	9 mm	Dk.Brown
Swan-Trum-peter	12mm	Brown
Swan Tundra	12 mm	Brown
Teal-Cinna-mon	7-8 mm	Burnt Orange
Teal Cina-mon F.	7-8 mm	Brown
Teal Green Wing M/F	7 - 8 mm	Brown
Teal Blue Wing M/F	7 mm	Dk.Brown
Widgeon	8 - 9 mm	Hazel/Brown
Woodduck	9 - 10 mm	Red
Woodduck F.	9 - 10 mm	Brown

## Upland Game Eye Chart

Species	Size	Color
Bobwhite	6 - 7 mm	Hazel
Chukar	7 - 9 mm	Brown
Grouse Blue	7 - 8 mm	Hazel
Grouse Ruffed	8 - 9 mm	Hazel
Grouse Sage	8 - 9 mm	Hazel
Grouse Sharp Tail	8 - 9 mm	Hazel
Grouse Spruce	7 - 8 mm	Hazel
Prairie chicken	8 - 9 mm	Hazel
Ptarmigan	8 - 9 mm	Brown
Ring neck Pheasant Rooster	11 mm	Speacil Pheasant
Ring neck Pheasant Hen	9 mm	Brown
Wild Turkey	12-14 mm	Brown



# PAYER EYES

Glass eyes to die for.



## UBDK

( UnBanded )  
No White



## WBDK

( White Banded )



## PRDK

( Prerotated )



## WBVDK

( White Banded Viens )



## PRVDK

( Prerotated Viens )



## DCDK

( Defined Cornea )



## DCprime DK

( Prerotated DC with Viens )

### Dark Color WhiteTail Deer Eyes

Code	Size	Size	Size	Price
UBDK	28mm	30mm	32mm	\$ 9.30
WBDK	28mm	30mm	32mm	\$ 12.55
PRDK	28mm	30mm	32mm	\$ 11.95
WBVDK	28mm	30mm	32mm	\$ 13.90
PRVDK	28mm	30mm	32mm	\$ 15.55
DCDK	28mm	30mm	32mm	\$ 13.90
DCPRIME DK	28mm	30mm	32mm	\$ 16.90





# PAYER EYES

## Glass eyes to die for.



### UBMC

( UnBanded )  
( No White )



### WBMC

( White Banded )



### PRMC

( Prerotated )



### WBVMC

( White Banded Viens )



### PRVMC

( Prerotated )



### DCMC

( Defined Cornea )



### DCprimeMC

( Prerotated DC with Viens )



Medium Color WhiteTail Deer Eyes

Code	Size	Size	Size	Price
UBMC	28mm	30mm	32mm	\$ 9.30
WBMC	28mm	30mm	32mm	\$ 12.55
PRMC	28mm	30mm	32mm	\$ 11.95
WBVMC	28mm	30mm	32mm	\$ 13.90
PRVMC	28mm	30mm	32mm	\$ 15.55
DCMC	28mm	30mm	32mm	\$ 13.90
DCPRIME MC	28mm	30mm	32mm	\$ 16.90



# PAYER EYES

Glass eyes to die for.



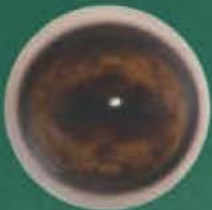
## ELK-UBMC

( UnBanded Medium Color )  
No White



## ELK-PRMC

( Prerotated Medium Color )



## ELK-WBMC

( White Banded Medium Color )



## SHEEP-UBMC

( UnBanded Light Color )



## SHEEP-PRMC

( Prerotated Light Color )



## SHEEP-WBMC

( White Banded Light Color )

### Medium Color Elk Eyes

Code	Size	Size	Price
ELK-UBMC	34mm	36mm	\$ 13.20
ELK-WBMC	34mm	36mm	\$ 14.55
ELK-PRMC	34mm	36mm	\$ 14.55

### Medium Color Sheep Eyes

Code	Size	Size	Price
Sheep UBMC	28mm	30mm	\$ 13.20
Sheep WBMC	28mm	30mm	\$ 14.55
Sheep-PRMC	28mm	30mm	\$ 14.55





# PAYER EYES

## Glass eyes to die for.

They capture the natural colors and reflective qualities of the animal's original eyes, in flawless detail. They are nearly indistinguishable from the living animal's eyes.

Payer Eyes are produced with extreme care, yielding a perfect, glossy, blemish-free surface. Whether used for taxidermy, wood carvings, jewelry, or special effects, Payer Eyes will bring your special art to life.



### COYOTE

Code	Size	Price
PCE16	16 mm	\$ 11.70
PCE18	18 mm	\$ 11.70
PCE20	20 mm	\$ 11.70



( Slit Pupil )

### BOBCAT

Code	Size	Price
PBC16	16 mm	\$ 11.70
PBC18	18 mm	\$ 11.70
PBC20	20 mm	\$ 11.70



### REDFOX

Code	Size	Price
PRF14	14 mm	\$ 11.70
PRF16	16 mm	\$ 11.70



### GRAY FOX

Code	Size	Price
PGF14	14 mm	\$ 11.70
PGF16	16 mm	\$ 11.70



### ALLIGATOR

Code	Size	Price
PA16	16 mm	\$ 12.30
PA	18 mm	\$ 12.30
PA20	20 mm	\$ 12.30
PA22	22 mm	\$ 12.30

Protects acrylic plastic and glass eyes from paint over spray. Remove membrane layer with pointed tooth pick. This is a valuable time saver.

Code	Price
EP	\$ 8.00



# ***NEW*** Ultimate Ear Liners

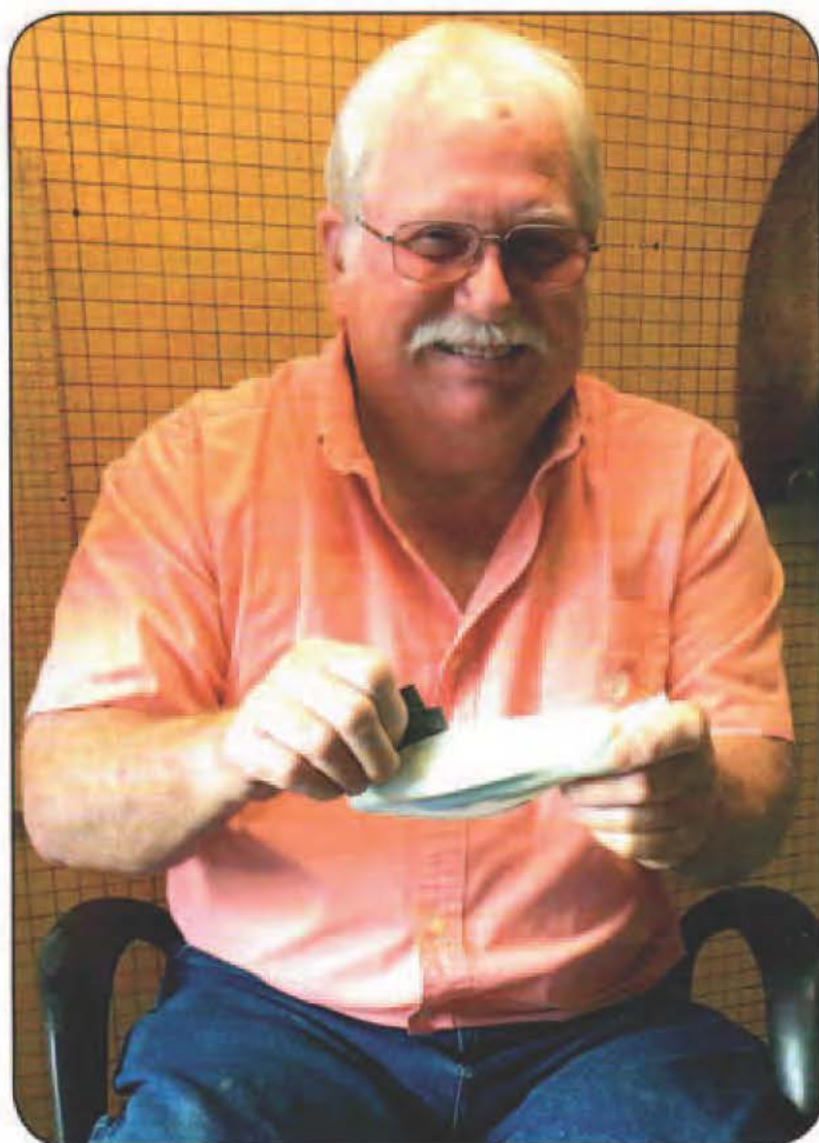
*Sculpted by: World Renowned Taxidermist/Sculptor*

***Cary Cochran***

After years of being in the taxidermy supply industry and thousands of hours of intense whitetail study, Cary Cochran has come out with the ultimate ear liner for whitetail deer. These ear liners are cast and taken directly from whitetail deer ear cartilages. They have the correct anatomy with clean edges and fine lines. They are made from flexible plastic and colored in pink for color bleed-through which makes for very little finish work. Slightly textured matte finish for better adhesion. Inner ear canal is sculpted with correct anatomy and pocket depth to easily accept bottom end of the actual inner ear cartilage left attached to ear skin for very little finish work.

***At this time only one size available - Medium #ULT-M per pair.***

***More sizes and accessories coming in the future!***



Code	Price
ULT-M	\$ 6.99

*Lightly textured matte finish  
for better adhesion*

*Manufactured by: Taxidermy Innovative Products*

Orders 800-488-3337 / Information 662-286-5133



# Epply Ear System, Liners and Noses

## 360 EarTech System

The 360 EarTech System is a simple revolutionary technology for creating customized high quality mounts.



360 Aggressive Ear Butt

Code	Price
E360AG	\$ 8.10



360 Back Ear Butt

Code	Price
EB360	\$ 4.70



360 Forward Ear Butt

Code	Price
EF360	\$ 4.70



Whitetail Ear Liner Plain

Code	Price
EEPW150	\$ 7.50



360 Ear Liner

Code	Price
EEL360S	\$ 7.50
EEL360M	\$ 7.50
EEL360L	\$ 7.75



Whitetail EZ Replacement Nose

Code	Size	Price
45S	Small	\$ 12.00
45WM	Med	\$ 12.00
45WL	Large	\$ 12.00



Dan D Noser

Code	Price
DDN	\$ 35.00

Size to fit forms with eye to nose lengths.

Sm. 6 3/4 - 7 Eye to Nose

Med. 7 - 7 3/8 Eye to Nose

Lg 7 3/8 - 8 1/4 Eye to Nose

Complete nasal detail with carvable outer shell that can be sanded to match form.

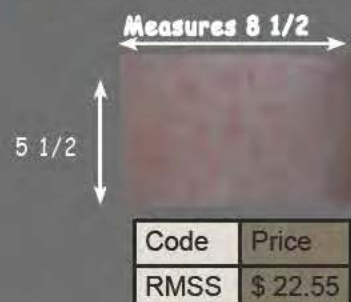


Whitetail EZ Pink Septum Nose

Code	Size	Price
45WPS	Small	\$ 14.00
45WPM	Med	\$ 14.00
45WPL	Large	\$ 14.00

Ray Murphy's  
The Original Veined  
Septum Sheet

Aprox 8 to 9 septums made from sheet



Code	Price
RMSS	\$ 22.55

# Turkey



Mounted by  
Paul Witt  
Belmont, MS



# Turkey Bodies and Accessories

Anthony Eddy  
Turkey Heads

Painted \$73.00



Code  
PTHSTR

Strutting



Code  
PTHSTA

Standing

Code  
PTHG

Code  
PTHF



Gobbling



Flying



Code  
AEHA

Hen

Painted \$73.00  
UnPainted \$50.00



Code  
UPTH

UnPainted

Strutting, Standing, Gobbling  
and Flying all available.



Turkey Body  
21-24lbs

Code	Position	Price
AE-3	Fly/ Stand	\$ 26.00
AE-4	Strut	\$ 26.00



Turkey Body  
17-20lbs

Code	Position	Price
AE-1	Fly/ Stand	\$ 24.00
AE-2	Strut	\$ 24.00



Breast Mnt

Code	Price
AE-5	\$ 18.65



Turkey Legs

Code	Price
AE-8	\$ 12.00



Strut Necks

Code	Size	Price
17NP	17-20lbs	\$ 11.00
21NP	21-24lbs	\$ 11.00



Turkey Flex Bye

Code	Price
Flex-T	\$ 7.00



Please Specify  
Standing or Flying

Turkey Necks

Code	Position	Price
AE-7	Standing	\$ 12.00



Turkey Necks

Code	Position	Price
AE-7	Flying	\$ 12.00



Turkey Base

Code	Base	Price
AE-7	Earth, Clay, Sand	\$ 48.00

Turkey Body  
17-20lbs

Code	Position	Price
JT-1	Fly/ Stand	\$ 23.00
JT-2	Strut	\$ 23.00



## James' Turkey Bodies

Turkey Body  
21-24lbs

Code	Position	Price
JT-3	Fly/ Stand	\$ 25.00
JT-4	Strut	\$ 25.00

TURKEY BODIES, HEADS & NECKS



# Noon's Plug In Taxidermy

**NEW**



## Standing Turkey plug Kit

- 2 - 10 Gage wing Wires ( Red )
- 2 - 3/16 inch Leg Rod ( Light Blue )
- 1 - 10 Gage Neck and Head Wire ( Red )
- 1 - 16 Gage Tail wire ( Blue )

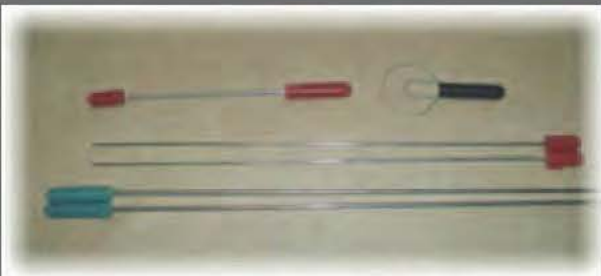
Code	Price
TKSTR	\$ 10.00



## Sitting Turkey plug Kit

- 2 - 12 Gage wing Wires ( Green )
- 2 - 3/16 inch Leg Rod ( Light Blue )
- 1 - 10 Gage Neck and Head Wire ( Red )
- 1 - 16 Gage Tail wire ( Blue )

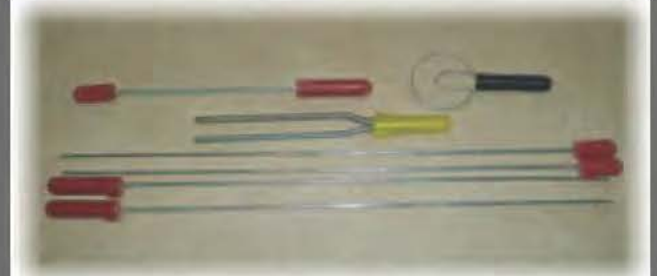
Code	Price
TKSTA	\$ 10.00



## Gobbler Turkey plug Kit

- 2 - 10 Gage wing Wires ( Red )
- 2 - 3/16 inch Leg Rod ( Light Blue )
- 1 - 10 Gage Neck and Head Wire ( Red )
- 1 - 16 Gage Tail wire ( Blue )

Code	Price
TKGOB	\$ 10.00



## Flying Turkey plug Kit

- 2 - 10 Gage wing Wires ( Red )
- 2 - 10 Gage Leg Wires ( Red )
- 1 - 10 Gage Neck and Head Wire ( Red )
- 1 - 16 Gage Tail wire ( Blue )

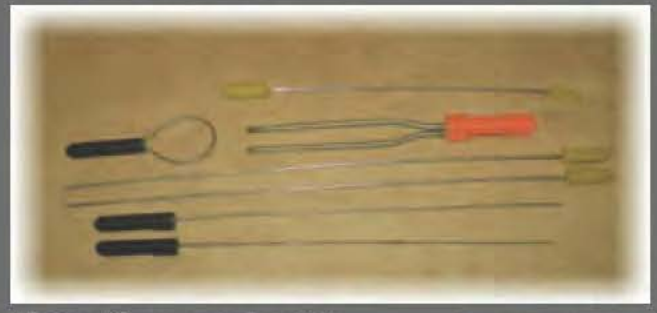
Code	Price
TKFLY	\$ 14.50



## Standing Pheasant plug Kit

- 2 - 12 Gage Leg Wires ( Green )
- 2 - 16 Gage Wing Wires ( Red )
- 1 - 16 Gage Neck and Head Wire ( Yellow )
- 1 - 18 Gage Tail Wire ( Blue )

Code	Price
PKSTA	\$ 6.00



## Flying Pheasant plug Kit

- 2 - 16 Gage Leg Wires ( Blue )
- 2 - 14 Gage Wing Wires ( Yellow )
- 1 - 14 Gage Neck and Head Wire ( Yellow )
- 1 - 16 Gage Tail Wire ( Yellow )
- 1 - Flying Support

Code	Price
PKFLY	\$ 8.05

Plug in Turkey kits come with 2 leg wires, 2 wing wires, 1 neck wire and a one tail wire ( Flying kit has a flying support with 2 threaded rods ). The plug are made to go into a 5/8" hole drilled into the turkey form. The wires are attached to the turkey wing bones and leg bones in the same way as traditional wires, then the plugs are glued to the form ( I prefer Gorilla glue for this ).



# Waterfowl & Upland Game



2014 NTA National Champion  
Waterfowl

Mounted by  
Randy Terry  
Fort Smith, AR



# Heads and Neck Material

## Reproduction Waterfowl Heads & Bird Bodies by Randy Turner



Wood Duck

Duck Heads  
Close Mouth



Wood Duck O.M.

Duck Heads  
Open Mouth



Pheasant



Waterfowl

Code	Head	Price
RT131	Bluewing Dr.	\$ 11.00
RT142	Bluewing Hen	\$ 11.00
RT113	Buffle Head Dr.	\$ 11.00
RT134	Buffle Head Hen	\$ 11.00
RT107	Cinamon Teal Dr.	\$ 11.00
RT101	Mallard Dr.	\$ 11.00
RT121	Mallard Hen	\$ 11.00
RT106	Canvasback Dr.	\$ 11.00
RT115	Canvasback Hen	\$ 11.00
RT103	Gadwall Dr.	\$ 11.00
RT153	Gadwell Hen	\$ 11.00
RT135	Hooded Meg Dr.	\$ 11.00
RT140	Hooded Meg Hen	\$ 11.00
RT104	Wood Duck Dr	\$ 11.00
RT143	Wood Duck Hen	\$ 11.00
RT109	G.Wing Dr.	\$ 11.00
RT138	GWing Hen	\$ 11.00
RT112	Goldeneye Dr.	\$ 11.00
RT116	Glodeneye Hen	\$ 11.00
RT102	Pintail Dr	\$ 11.00
RT136	Pintail Hen	\$ 11.00
RT108	Red Head Dr	\$ 11.00
RT146	Ring Neck Dr	\$ 11.00
RT152	Ring Neck Hen	\$ 11.00
RT105	Shoveler Dr	\$ 11.00
RT154	Shoveler Hen	\$ 11.00
RT117	Widgeon Dr.	\$ 11.00
RT137	Widgeon Hen	\$ 11.00
RT201	Snow Goose	\$ 13.00
RT207	Can Goose Small	\$ 13.00
RT209	Can Goose Med	\$ 13.00
RT204	Can Goose Large	\$ 13.00
RT206	Ross Goose	\$ 13.00
RT203	Speckle Goose	\$ 13.00
RT111	C. EIDER Dr.	\$ 13.00

Code	Head	Price
OM131	Blue wing Dr O.M.	\$ 11.00
OM142	Mallard Hen O.M.	\$ 11.00
OM104	Woodduck Dr O.M.	\$ 11.00
OM143	Woodduck Hen O.M.	\$ 11.00
OM102	Pintail Dr O.M.	\$ 11.00
OM101	Pintail Hen O.M.	\$ 11.00
OM109	Green Wing Dr. O.M.	\$ 11.00
OM106	Canvasback Dr. O.M.	\$ 11.00
OM115	Canvasback HenO.M.	\$ 11.00
OM131	Bluewing Dr. O.M.	\$ 11.00
OM146	Ring Neck Dr.O.M.	\$ 11.00
OM112	Goldeneye Dr. O.M.	\$ 11.00
OM108	Red Head Dr. O.M.	\$ 11.00

### Bird Bodies by : Paul Witt



**100% Cotton**  
Great for using on your  
Bird and Turkey mounts  
1 lb. bags \$ 6.00

### Neck Material

Size	PRICE
1/4"	\$0.35 / Ft.
3/8"	\$0.35 / Ft.
1/2"	\$0.35 / Ft.
5/8"	\$0.40 / Ft.
3/4"	\$0.45 / Ft.
1"	\$0.55 / Ft.
1 1/4"	\$0.70 / Ft.

FORM	LENGTH	SUGGESTIONS	PRICE
<b>Randy Turner Bird Bodies</b>			
PD-1	5 x 7	Green Wing Teal	\$ 9.00
PD-2	6 x 7 1/2	Blue Wing Teal, Cinnamon Teal	\$ 9.00
PD-3	6 3/4 x 8 1/2	Wood Duck, Shoveler, Tree Duck	\$ 9.00
PD-4	7 3/4 x 9 1/4	Redhead, Widgeon, Pintail, Sm. Mallard	\$ 9.00
PD-5	8 1/4 x 10 1/4	Mallard, Gadwall	\$ 9.00
G1	9 x 12 1/4	Brant, Richardson, Ross	\$ 11.00
G2	10 3/4 x 14	Blue, Snow White - Fronted	\$ 11.00
G3	11 3/4 x 14 3/4	Goose - Lesser Canadian	\$ 15.00
G4	13 1/2 x 16 1/2	Goose - Canadian	\$ 16.00
PH1	7 x 11	Pheasant - Small or Hen	\$ 9.00
PH2	7 1/2 x 12	Pheasant - Average	\$ 9.00
TK2CB		Turkey Chest Body	\$13.00
Quail	3 1/2 x 6 1/2	Quail	\$ 4.50
KT-1	17 - 19 lbs	Turkey Economy Line	\$ 17.00
<b>Paul Witt Bird Bodies</b>			
W1	8 1/2 x 11 1/2	Mallard, Black Duck, Canvas Back	\$ 10.50
W1L	8 1/2 x 11 1/2	Mallard - Landing	\$ 10.50
W2	7 x 8 1/2	Wood Duck, Hd Mergan., Lg Shoveler	\$ 10.50
W2L	7 x 8 1/2	Wood Duck Landing, Widgeon	\$ 10.50
W3	7 1/2 x 10	Pintail	\$ 10.50
W3L	7 1/2 x 10	Pintail - Landing	\$ 10.50
W4	5 3/4 x 7 3/4	Blue Wing, Lg Green Wing & Cinn. Teal	\$ 10.50
W4L	5 3/4 x 7 3/4	Blue Wing Teal, Buffle Head Landing	\$ 10.50
W5	5 x 7	Green Wing Teal	\$ 10.50
W5L	5 x 7	Green Wing Teal Landing	\$ 10.50
W6	7 1/2 x 11	Gadwell, Sm Mallard, Mallard Hen	\$ 10.50
W6L	7 1/2 x 11	Gadwell - Landing	\$ 10.50
W7	8 1/2 x 12 1/2	Mallard - Large - Ross Goose, Brant	\$ 10.50
W7L	8 1/2 x 12 1/2	Mallard - Large - Landing	\$ 10.50
W8	6 1/2 x 8 1/2	Shoveler or Small Wood Duck	\$ 10.50
W8L	6 1/2 x 8 1/2	Shoveler - Landing	\$ 10.50
WG1	14 1/2 x 21	Goose - Canadian X-Large	\$ 17.80
WG2	13 1/2 x 18	Goose - Canadian Large	\$ 16.00
WG3	11 1/2 x 14 1/2	Goose - Blue, Lesser Snow	\$ 13.00
WG4	10 1/4 x 14	Goose - Speckle Belly, Small Snow	\$ 13.00
WPH1	7 3/4 x 12	Pheasant	\$ 10.50
WPH2	7 1/4 x 11	Pheasant - Small	\$ 10.50
WPH3	8 1/2 x 14	Pheasant - Large	\$ 10.50



Refer To Page 82  
For Annealed Wire  
& Galvanized Wire



# Waterfowl Repro Heads By Joe Kaiser

## Painted Heads Only



Wood Duck



Mallard Drake

Code	Head	Price
KPMD	Mallard Dr.	\$ 20.95
KPMH	Mallard Hen	\$ 20.95
KPWDD	Woodduck Dr	\$ 20.95
KPWDH	Woodduck Hen	\$ 20.95
KPPD	Pintail Dr	\$ 20.95
KPPH	Pintail Hen	\$ 20.95
KPGWD	Green Wing Dr.	\$ 20.95
KPGWH	Green Wing Hen	\$ 20.95
KPCBD	Canvasback Dr.	\$ 20.95
KPHMD	Hooded Meg. Dr.	\$ 20.95

Code	Head	Price
KPCBH	Canvasback Hen	\$ 20.95
KPRHD	Red Head Dr.	\$ 20.95
KPRHH	Red Head Hen	\$ 20.95
KPBWD	Blue Wing Dr.	\$ 20.95
KPBWH	Blue Wing Hen	\$ 20.95
KPRND	Ring Neck Dr.	\$ 20.95
KPRNH	Ring Neck Hen	\$ 20.95
KPWD	Widgeon Dr.	\$ 20.95
KPWH	Widgeon Hen	\$ 20.95
KPHMH	Hooded Meg Hen	\$ 20.95



Red Head



Pintail Drake

## Eyes and Misc



### Excelsior

Wood Excelsior for wrapping bodies or filling in.

Code	Pounds	Price
EXC2	2 LBS	\$ 3.75
EXC5	5 LBS	\$ 8.25

## Competition Flex Birds Eyes: by Wayne Cooper



Code	Description	Price
FLEX-GEN	General Purpose 9mm is used for the following waterfowl.	\$ 6.50
Mallard M/F	Gadwall M/F	\$ 6.50
Pintail M/F	Black Duck M/F	\$ 6.50
Widgeon M/F	Redhead (F)	\$ 6.50
Shoveler (F)	Ringneck Pheasant (F)	\$ 6.50
CanvBack F	Hd Merganser (F)	\$ 6.50
RingNeck (F)	Surf Scoter (F)	\$ 6.50
All Geese	White Winged Scoter	\$ 6.50
	Except white fronted and Canadian	\$ 7.00



Code	Description	Price
FLEX-CG	Can. Goose 10mm ( M/F )	\$ 7.00
FLEX-T	Turkey 12 mm (M w/Lids)	\$ 7.00



Code	Description	Price
FLEX-WDM	Wood Duck 9 mm (M)	\$ 6.50



Code	Description	Price
FLEX-WDF	Wood Duck 9 mm (F)	\$ 6.50



Code	Description	Price
FLEX-WFG	White-Fronted Goose 9mm ( M/F	\$ 7.00



Code	Description	Price
FLEX-CTM	Cinnamon Teal 7mm (M)	\$ 6.50



Code	Description	Price
FLEX-PH	Pheasant 9mm (M)	\$ 6.50



Code	Description	Price
FLEX-SCP	Scaup 9mm (M/F)	\$ 6.50
FLEX-RHD	Redhead 9mm (M)	\$ 6.50
FLEX-GE	Golden Eye 9mm (M)	\$ 6.50



Code	Description	Price
FLEX-Teal	Teal Green / Blue 7mm	\$ 6.50
FLEX-CTF	Cinn. Teal (F) 7mm	\$ 6.50
FLEX-BUFF	M/F Bufflehead 7mm	\$ 6.50
FLEX-RUDD	M/F Ruddy Duck 7mm	\$ 6.50



# Bird Feet , Preserve & Wire

## Wing, Feet & Velvet Preservative



Inject antlers about every 2 to 3 inches from base of antlers to the end of the points. Inject into veins if possible. Then spray outside of the antlers with spray bottle. Inject fleshy areas with syringe.

WFVPQ	Qt.	\$14.50
WVPT	Plnt	\$ 9.00

## Stain-Away



For Waterfowl - Use a small amount in wash water or to use straight from bottle, use rubber gloves, rub stain away lightly with soft cloth or cotton balls until stain is gone.

Code	Size	Price
SAQ	Qt.	\$ 12.00
SAG	Gal	\$ 36.00

## Curved Tip Syringe



This Unique syringe with curved tip can be used to inject caulk and glue. Used on birds, fish and small mammals etc.

S-412	\$ 1.35
-------	---------

## Curved Tip Syringe



Code	Size	Price
S-35	35cc	\$ 2.35
S-20	20cc	\$ 2.00
S-3	3cc	\$ 1.50

## Needles



Available in 16g, 18g and 22g. All Sizes \$0.50 each.



## Annealed Wire

The Annealed wire is easier to bend and keeps strength. Used for birds in place of galvanized wire. 36" Length

Type	Pieces Per LB	Size
AW 9ga	6	\$ 8.25 Per LB.
AW 12ga	11	\$ 8.25 Per LB.
AW 14ga	20	\$ 8.25 Per LB.
AW 16ga	32	\$ 8.25 Per LB.

Gauge For illustration purposes printing may vary.

6ga

9ga

10ga

12ga

14ga

16ga

18ga

## Joe Kaiser's Color-Ject



This product is a 2 part inject. Colorject comes in 4 colors: Mallard Orange, Pintail Gray, Turkey Red, Woodduck Yellow. Colorject preserves and colors feet with very little painting, or none at all.

\$19.95 Kit Specify Color

## Glycerin



Used to make tanned hides soft and pliable to work with. Also used to preserve plants, leaves and moss. Removes moisture and keeps plants in original shape. Keep out of reach of children !!

Qt. \$ 13.80

## Mohrs Duck Feet ( No Wire ) While Supplies Last



MDF41 Mallard Standing \$32.15

MDF42 Mallard Swimming \$32.15

DF041-4 Teal Standing \$30.80



MDF43 Pintail Standing \$32.15

MDF47 Redhead Standing \$34.05

MDF48 Buffle Head Stnd \$34.05

## Galvanized Bird Wire



Type	Pieces Per LB	Size
BW 6ga	4	\$6.75 Per LB.
Bw 9ga	6	\$6.75 Per LB.
Bw 10ga	7	\$6.75 Per LB.
Bw 12ga	11	\$6.75 Per LB.
BW 14ga	20	\$6.75 Per LB.
BW 16ga	32	\$6.75 Per LB.
BW 18ga	71	\$6.75 Per LB.



# Fish



2014 NTA National Champion  
Master Division  
Warm Water Fish  
Skin Mount

Mounted by  
Rodney Harper  
Damascus, AR



# James' Bass & Crappie Bodies



## Klear-Kote

Polymer-Coating Resin & Hardener. Makes beautiful bases with water scene. Also is used for top coat on fish to give a wet look. Mix 50/50

Code	Price
KK16OZ	\$ 13.95
KK32OZ	\$ 21.95
KK256OZ	\$ 103.50



Mounted By Rodney Harper Beebe, AR 2011 Mississippi Fish Champion



LG Mouth



Crappie



SM Mouth



Crappie / Trout



Walleye

## Cooper Flex Eyes

Size	Price
10 - 12 mm	\$ 7.00
14 - 18 mm	\$ 7.50
20 - 22 mm	\$ 8.00
24 - 26 mm	\$ 8.50

Walleyes - \$1.00 Extra

## Large Mouth Bass



## Small Mouth Bass



## Fin Backing Tape

A breathable tape to be used on fish fins to repair. Apply when fish is dry. Then add your fin backing cream.

FORM	LENGTH	GIRTH	TURN	POUND	PRICE
BR-17	10	11 3/4	RT	2 1/2	\$ 15.00
BL-18	10	11 3/4	LT	2 1/2	\$ 15.00
BR-19	11	12	RT	3 1/2	\$ 16.00
BL-20	11	12	LT	3 1/2	\$ 16.00
BR-21	11 1/4	13 1/4	RT	4 1/2	\$ 16.00
BL-22	11 1/4	13 1/4	LT	4 1/2	\$ 16.00
BR-23	12	14	RT	5 1/4	\$ 17.00
BL-24	12	14	LT	5 1/4	\$ 17.00
BR-25	13	15	RT	6 1/4	\$ 17.00
BL-26	13	15	LT	6 1/4	\$ 17.00
BR-27	13 1/4	16 3/4	RT	7 1/4	\$ 18.00
BL-28	13 1/4	16 3/4	LT	7 1/4	\$ 18.00
BR-29	14 1/2	17 1/2	RT	8 1/2	\$ 18.00
BL-30	14 1/2	17 1/2	LT	8 1/2	\$ 18.00

FORM	LENGTH	GIRTH	TURN	POUND	PRICE
SM-1	10 3/4	11 3/4	LT	2 1/2 - 3	\$ 15.00
SM-2	10 3/4	11 3/4	RT	2 1/2 - 3	\$ 15.00
SM-3	13 1/2	14 3/4	LT	5	\$ 16.00
SM-4	13 1/2	14 3/4	RT	5	\$ 16.00
SM-5	14	15 1/2	LT	6 - 7	\$ 17.00
SM-6	14	15 1/2	RT	6 - 7	\$ 17.00

## Crappie



FORM	LENGTH	GIRTH	TURN	POUND	PRICE
CL-1	8	11 3/4	LT	1 1/2 - 2	\$ 15.00
CR-3	8	11 3/4	RT	1 1/2 - 2	\$ 15.00
CL-2	9 1/2	13 3/4	LT	2 1/4 - 2 3/4	\$ 16.00
CR-4	9 1/2	13 3/4	RT	2 1/4 - 2 3/4	\$ 16.00

## Super Fish Gloss

The smoother, more durable finish, when cured is washable. One coat will show tremendous depth and is equal to several coats of other clear aerosols.

Code	Price
SFG	\$ 14.00

## Super Fish Sealer

Has special adhesive promoters allow for a high strength bond to the fish skin surface. Also special fibers provide excellent sealing qualities with a quick build up from additional coats.

Code	Price
SFS	\$ 14.00





# Rocks by : Ozark Woods

OZARK ROCKS & BASES



**Rock #1 \$28.00**  
**Oak Base #1 \$17.60**  
**Both for \$41.05**

6 x 6 x 7 This rock is used with all the small game pedestals except for the coyote. It can also be used as a perch for ducks and gamebirds by turning it horizontal and hanging it on the wall.



**Rock #2 \$35.00**  
**Oak Base #2 \$19.25**  
**Both for \$48.80**

9 x 6 x 10 This rock is used with the coyote pedestals and the two mink forms. It can also be used in all your habitat work with other small mammals and birds.



**Rock #3 \$102.75**

22 x 14 x 11 Fits Raccoon form RC-4110. It is also ideal for flower gardens and landscaping



**Rock #4 \$102.75**  
**FB#4 \$102.75**

23 x 11 x 12 Fits Grey Fox form GF-3110 and turned upside down fits the bobcat form BC-1233. All sides of this rock have been formed. FB-4 Rock is the same as Rock #4 except it has a flat back to hang on the wall.



**Rock #5 \$116.60**

28 x 18 x 13 Fits Bobcat forms BC-1133, BC-1166, BC-1322, BC-1333, BC-1355 and Grey Fox GF-3330. It can also be used in big game habitat scenes.



**Rock #6 \$68.30**

20 x 4 x 12 This rock is ideal for turkeys, small mammals, ducks and pheasants. It features a 3/4" recessed bottom to accommodate the leg wires.



**Rock #7 \$76.50**

14 x 19 x 9 This rock fits our Fisher form FR-7110. It also would work well with fish or birds because of its ledges and overhangs.



**Rock #8 \$134.10**

Rock Fits BC-1622, BC-1633. Would work well if you have a laying down Bobcat, Fox etc. Measures 30 x 16 x 9 1/2



**Rock #9 \$125.85**

25 x 14 x 14 1/2. Fits BC-1333B and BC 1322B Right turn bobcats. Also used in habitat scenes.



**Make & Break Rock Panel**

Unpainted. Ideal for breaking into smaller pieces to create a base of your own design. Break & Make's dimension makes it easy to add to your order and easy on your shipping costs.

Dimensions: 24" x 16" **\$32.00**



**The Knot**

Is used for a animal that needs a foot prop. Ideal for habitat for small animals birds.

Measures 13 x 11 1/2 x 6 1/2 **\$45.00**



**Driftwood Base**

Used for bobcat, fox and raccoon pedestals.

Measures 12 x 8 x 6

**\$46.15**

# Panels by : Ozark Woods



Oak

Walnut

EBONY



Oak

Walnut

EBONY



European #EDP Oak or Walnut, Ebony

Code Oak #11	Size	Price	Code Walnut #11	Size	Price	Code Ebony	Size	Price
ODPSO	16x20	\$ 35.00	ODPSW	16x20	\$ 39.00		—	N/A
ODPMO	17x21	\$ 37.35	ODPMW	17x21	\$ 46.55	ODPME	17x21	\$ 37.35
ODPLO	18x23	\$ 40.60	ODPLW	18x23	\$ 51.65	ODPLE	18x23	\$ 40.60
ODPXL	19x24	\$ 43.80	ODPXLW	19x24	\$ 54.40	ODPXLE	19x24	\$ 43.80
ODPXXL	20x25	\$ 47.55	ODPXXLW	20x25	\$ 58.90		—	N/A

Code	Size	Price
OEDPO	8x14	\$ 22.50
OEDPW	8x14	\$ 25.40
OEDPE	8x14	\$ 22.50

Oak

Walnut



Oval Panel #500 Oak or Walnut

Oak

Walnut

EBONY



Horn Mt Panel #77 Oak or Walnut, Ebony

Code	Size	Price	Code	Size	Price
OOPMO	9x12	\$ 17.75	OOPLO	10x14	\$ 19.50
OOPMW	9x12	\$ 22.50	OOPLW	10x14	\$ 24.95

Code	Size	Price	Code	Size	Price
OHMPSOak	8x10	\$ 15.10	OHMPSWalnut	8x10	\$ 20.50
OHMPMOak	10x12	\$ 16.35	OHMPMWalnut	10x12	\$ 21.80
OHMPSEbony	8x10	\$ 15.10	OHMPMEbony	10x12	\$ 16.35

Oak

Oak

Oak

Walnut



Elk Panel

Code	Size	Price
OB#2	Ped Base2	\$ 19.25

Code	Size	Price
OB#1S	Ped Base 1	\$ 17.60

Code	Size	Price
OEELKP OAK	10x21.5	\$ 29.75
OEELKP WANUT	10x21.5	\$ 34.50



# High Quality Birch Panels



**KB Deer Panel**

Code	Size	Price
KBS	16x20	\$ 19.30
KBM	17x21	\$ 23.00
KBL	18x23	\$ 25.00
KBXL	19x24	\$ 30.25
KBXXL	20x25	\$ 33.90



**KBOS Offset Sweep**

Code	Size	Price
KBOS-S	16x18	\$ 16.50
KBOS-M	17x19	\$ 18.00
KBOS-L	18x20.5	\$ 20.00
KBOS-XL	20x23	\$ 27.50
Left or Right Turn Specify		



**RW6 Horn Mount**

Code	Size	Price
RW6-S	8x10	\$ 8.50
RW6-M	10x12	\$



**RW42 European**

Code	Size	Price
RW42-D	9x17	\$ 16.00
RW42-Elk	15x29	\$ 29.50



**RW1 Panel  
with Black Edges**

Code	Size	Price
RW1-S	16x20	\$ 19.30
RW1-M	17x21	\$ 23.00
RW1-L	18x23	\$ 25.00
RW1-XL	19x24	\$ 30.25
RW1-XXL	20x25	\$ 33.90



**KJK Deer Panel**

Code	Size	Price
KJK16	16x23	\$ 23.00
KJK17	17x24	\$ 25.00
KJK18	18x25	\$ 30.25



**Mounted BY:  
Ken James II**



**RW27 European**

Code	Size	Price
RW27-S	8x14	\$ 15.00
RW27-ST	10x16	\$ 17.95



**RW11 Oval**

Code	Size	Price
RW11-S	8x12	\$ 9.00
RW11-M	10x14	\$ 11.25



**RW15 Turkey Fan**

Code	Size	Price
RW15	12.5x16 (3pcs)	\$ 33.50



**European 3D  
Reversible for wall or Table**

Code	Size	Price
3DEPBirch	8.5x14.5	\$ 28.50



**RW7 Gun Rack**

Code	Size	Price
Rw7	8x24	\$ 14.00



# Walnut Hollow Turkey Fan Panels

The Deluxe Turkey Display Kit in Oak with Turkey Image Enhancement is created through an innovative and revolutionary process that enhances and adds interest to your mount by embedding a high-quality, digital image right into the surface of the wood.

This solid oak do-it-yourself turkey fan and beard taxidermy display kit features a background image of a Turkey on the face panel. Oak panels have a satin lacquer finish. The face panel covers the quill feathers easily. Everything is included to create your display.



Code	Price
T40019	\$ 35.25



Oak Spring



Code	Price
T40720	\$ 35.25



Full Fan



Code	Price
T40160	\$ 35.25



Oak Drum sticks



Code	Price
T40721	\$ 35.25



Strutter



Code	Price
T40706	\$ 35.25



King of Spring

2 solid oak panels with a superior grade satin lacquer finish  
2 screws for assembly

Sawtooth hanger with screws

Works with Eastern, Osceola, Rio Grande, Merriam's and Gould's Turkeys

Assembled dimensions:  $19\frac{1}{2}" \times 9\frac{3}{4}" \times 2\frac{5}{8}"$

## Turkey Fan Panel Oak or Walnut



Oak

Solid Hardwood  
Fan Cap 9" x 9"  
13" X 16 1/2"

Code	Price
TFOAK	\$ 44.50
TFWALNUT	\$ 46.50

Code	Price
DT41712	\$ 23.40

## Rustic Turkey Panels

Deluxe Turkey Display kit



Turkey Fan and Beard Mount Kit includes 16 x 9 3/4" solid Pine panel with Rustic finish. Used to mount turkey tail feathers and beard. Face panel covers quill feathers easily. Everything included to create the display.



# Oak Euro and Walnut Kits

Reversible for table top or wall Display

## Deluxe Euro Skull Oak



Code	Size	Price
D029372	16"x 9 3/4"	\$ 35.50



## Deluxe Euro Skull Walnut



Code	Size	Price
DW29474	16"x 9 3/4"	\$ 39.65

## Oak and Walnut Euro Panels

### Euro plaques Oak

**NEW**



Code	Size	Price
E38221	16"x 9 3/4"	\$ 20.45

### Euro plaques Walnut

**NEW**



Code	Size	Price
E38222	16"x 9 3/4"	\$ 22.95

## Rustic Deluxe Antler Display Kit

Code	Price
DA41714	\$ 19.50

## Antler Mounting Kit

Code	Price
MK29352	\$ 6.65



Antler Mounting Kit includes supplies needed for creating an antler display. Plaque not included.

- 2 - 2" Screws for Assembly
- 2 - Small Screws for Hanger
- 1 - Saw tooth Hanger
- 2 - Decorative Tacks
- 1 - 12" Gold Cord
- 1 - Antler Mount Cover



## Antler Mount Cover

Code	Price
C40800	\$ 4.50



- Traditional style antler mounting kit. Deluxe Antler Display Kit includes everything needed for creating an antler display on a 9 x 12" solid Pine Crest Plaque with Rustic finish.
- 2 - 2" Screws for Assembly
  - 2 - Small Screws for Hanger
  - 1 - Sawtooth Hanger
  - 2 - Decorative Tacks
  - 1 - 12" Gold Cord
  - 1 - Antler Mount Cover (AMC)
  - 1 - Crest Plaque

Discontinued items while supplies last.

## Weather Wood Panels



**WWKJK**  
Deer Panel Gray / Brown

Code	Size	Price
WWKJKS	16x23	\$ 27.00
WWKJKM	17x24	\$ 28.00
WWKJKL	18x25	\$ 29.00

Color can vary  
do to Printing.



Code	Size	Price
WWGS	16x20	\$ 27.00
WWGM	17x21	\$ 28.00
WWGL	18x23	\$ 29.00
WWGXL	19x24	\$ 31.50

## Cypress Ply-Wood Panels



Code	Size	Price
CPWPM	17x21	\$ 28.00
CPWPL	18x23	\$ 29.00
CPWPXL	19x24	\$ 31.50



Horn Mount Panel

Code	Size	Price
WWHMPs	8x10	\$ 10.00
WWHMPM	10x12	\$ 16.50



Cypress Horn Panel

Code	Size	Price
CYHMP-S	8X10	\$ 22.00
CYHMP-M	9.5x12	\$ 28.00



Air Brush Cleaning Kit



Great for cleaning tubes, nozzles, Spray guns etc. 17 pcs set

Code	Price
ABCK	\$ 10.00



Sheet Moss

Code	Price
SM 4oz	\$ 6.00



Make & Break Rock Panel

Unpainted. Ideal for breaking into smaller pieces to create a base of your own design. Break & Make's dimension makes it easy to add to your order and easy on your shipping costs.

Dimensions: 24" x 16" **\$ 32.00**



# Walnut Creek Turkey Panels

Available Styles



TP-1

Style B



OAK

Style B



Walnut

Style G



NOTE: Specify "Style Letter" when ordering  
Plain Front has no engraving

TP1-GO	7" x 15 1/2"	'Strut	Oak	\$ 43.75
TP1-BO	7" x 15 1/2"	Flying	Oak	\$ 43.75
TP1-GW	7" x 15 1/2"	Strut	Walnut	\$ 43.75
TP1-BW	7" x 15 1/2"	Flying	Walnut	\$ 43.75
TP1-PO	7" x 15 1/2"	Plain	Oak	\$ 37.75
TP1-PW	7" x 15 1/2"	Plain	Walnut	\$ 37.75



"Walnut Creek"

3D European Reversible  
for Wall or Table mount

705

WC705-DPO	9 1/2" x 13"	OAK	\$ 42.45
WC7053-DPW	9 1/2" x 13"	WALNUT	\$ 42.45

## Barn Wood panels



Turkey fan Panel  
With Feet

Code	Size	Price
BWTFEET	15x8 W/ Feet	\$ 24.00



Turkey fan  
Panel Plain

Code	Size	Price
BWTF- Plain	15x8 Plain	\$ 22.00

Barn wood Skull Euro



Code	Size	Price
BWEU- RO	16 3/4x 7 3/4	\$ 23.00

# Paasche H Series & Parts



H-CARD Set Includes:  
H#3 airbrush, 1 oz bottle assembly, wrench, 6 foot braided air hose

Code	Price
H - Card	\$ 44.95



## "H" Set

Single Action Includes:  
H#3 airbrush, size 1 & 5 spray heads, 1/4 oz metal cup, 1 oz bottle assembly, 1 oz storage bottle, hanger, wrench, 6 foot braided air hose, lessons booklet and manual

Code	Price
H - Set	\$ 79.95



## Paasche "H" Needle

## Paasche "H" Needle & Tip

## "H" Bottle Assemblies

Code	Part	Price
HTN-1	Needle & Tip	\$ 10.95
HTN-3	Needle & Tip	\$ 10.95
HTN-5	Needle & Tip	\$ 10.95
HT-1	Tip	\$ 3.75
HT-3	Tip	\$ 3.75
HT-5	Tip	\$ 3.75

Code	Part	Price
HN-1	Needle	\$ 6.95
HN-3	Needle	\$ 6.95
HN-5	Needle	\$ 6.95

Code	Part	Price
H-1	1OZ Bottle Assembly	\$ 5.00
H-3	3OZ Bottle Assembly	\$ 5.00
H-1/4	1/4oz Metal Color Cup	\$ 5.95



## Moisture Trap

Code	Price
PMT	\$ 15.95



## Bottle Redi-Caps 20 count

Caps to keep filled paint bottles from drying out and prevent paints spills. Fits standard paint bottles.

Code	Price
Redi-caps	\$ 3.25



## Paasche Hoses

Code	Hoses	Price
PABH-6	6 FT HOSE	\$ 9.55
PABH-8	8FT HOSE	\$ 12.50
PABH-10	10 FT HOSE	\$ 14.50
PABH-15	15 FT HOSE	\$ 19.00



# Paasche VL Series & Parts



VL-CARD Set Includes:  
VL Double Action airbrush  
 with size 3 head, , 1 oz  
 bottle assembly, 6' braided  
 hose, wrench and lessons  
 book

Code	Price
VL - Card	\$ 71.95

VL-SET Includes:  
VL Double Action airbrush  
 with size 3 head, size 1 & 5  
 heads, 1 oz bottle assem-  
 bly, 1/4oz metal cup, 1oz  
 storage bottle, 6' braided  
 hose, hanger, wrench and  
 lessons book

Code	Price
VL - Set	\$ 79.95



FP-1/32 Flow Pencil. The FP flow pencil  
 similar to a fountain pen, in that it flows the  
 paint out the nib instead of spraying it. The  
FP is used extensively for pin striping, taxi-  
dermy, special effects makeup, etc. No air  
source needed. Lay down fine line with no  
overspray. Does not use a compressor.

Code	Price
FP-1/32	\$ 54.95

TG-SET Includes:  
TG#2 Double Action Air-  
 brush Gravity feed, .4 oz  
 cup, Cup Cover, (2) Wrench-  
 es, 6ft braided hose, les-  
 sons booklet and manual.

Code	Price
TG - Set	\$ 114.95



## Paasche Bottles, Gaskets, Lids

Code	Part	Price
VL-1	1oz Bottle Assembly	\$ 5.00
VL-3	3oz Bottle Assembly	\$ 5.10
P1	1oz Glass Bottle	\$ 1.30
P2	3oz Glass Bottle	\$ 1.50
PML1	Metal Lid 1oz	\$ .80
PML2	Metal Lid 3oz	\$ .80
PG1	Gasket 1oz	\$ .80
PG3	Gasket 3oz	\$ .80
VL-1/4	1/4oz Metal Cup	\$ 5.95

## "DH550R AIR COMPRESSOR

GENERAL INFORMATION: The maximum pres-  
sure of the compressor is 60 PSI (6 Bar). The  
maximum operating pressure while spraying will  
vary depending on size of fluid tip, needle and  
aircap. Example VL#3 - 40psi, TG#2 - 35psi

Features: •Portable & Lightweight •Low  
 Noise Level •Thermally Protected •Steady  
 Air Flow •Regulator & Moisture Trap •Auto  
 Stop and Start •1/4" NPT Fittings •Carrying  
 Handles



Code	Price
DH550R	\$ 147.00

## Paasche "VL" Needle

Code	Part	Price
VLN-1	Needle	\$ 5.50
VLN-3	Needle	\$ 5.50
VLN-5	Needle	\$ 5.50

## Paasche "VL" Tip

Code	Part	Price
VLT-1	Tip	\$ 5.60
VLT-3	Tip	\$ 5.60
VLT-5	Tip	\$ 5.60





# LifeTone Paint

LifeTone waters based paints are being discontinued get them while supplies last !!!



## LIFE TONE Paints

See opposite page for available colors.

## Laquer

Available in Pearls, Metallics, Pearlescents, Iridescent, Candy Colors, Opaques, Semi-Transparent, Transparent, Top Coates and Thinners.

## Hydro-Mist Water Base

## Waterfowl Colors

## Mammal Colors



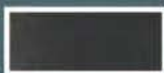
**Liquid  
Crystal**

12oz. \$17.50

## Life Tone Skin Dye-8oz.

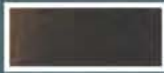
Black Skin Dye

Code	Price
BSD8	\$ 13.95



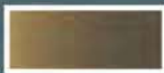
Dark Brown  
Skin Dye

Code	Price
DBSD8	\$ 13.95



Light Brown  
Skin Dye

Code	Price
LBSD8	\$ 13.95



Flesh Skin Dye

Code	Price
FSD8	\$ 13.95



White Skin Dye

Code	Price
WSD8	\$ 13.95



LT104 or HM104 Dark Red



LT105 or HM105 Red Violet



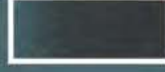
LT204 or HM204 Mallard Tan



LT304 or HM304 Wood Duck Yellow



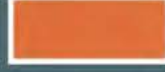
LT504 or HM504 Pale Blue



LT602 or HM602 Paynes Gray



LT603 or HM603 Neutral Gray



LT802 or HM802 Mallard Orange



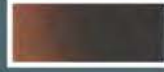
LT101 or HM101 Gill Red



LT102 or HM102 Natural Flesh



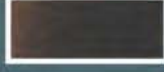
LT107 or HM107 Bright Flesh



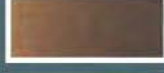
LT201 or HM201 Rich Brown



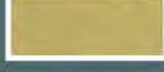
LT202 or HM202 Burnt Sienna



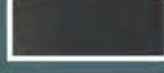
LT203 or HM203 Dark Brown



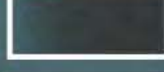
LT205 or HM205 Cocoa Brown



LT206 or HM206 Buckskin Tan



LT601 or HM601 Jet Black



LT602 or HM602 Paynes Gray



LT701 or HM701 Off White



LT702 or HM702 Pure White

## Warm Water Fish Colors



LT101 or HM101 Gill Red



LT404 or HM404 Black Green



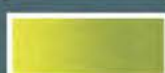
LT452 or HM452 Transparent  
Med Green



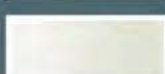
LT701 or HM701 Off White



LT941 or HM941 Iridescent Green



LT942 or HM942 Bass Green  
Metallic



LT973 or HM973 White Pearl

## Other Colors for Warm Water Fish

LT100 or HM100 Basecoat Sealer  
LT200 or HM200 Gloss Topcoat  
LT901 or HM901 Retarder

NOTE: Samples may vary in Color  
due to Printing.



## Opagues, Semi-Transparent, Transparent Colors - 8oz. \$ 11.75 ea.

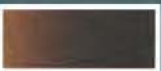

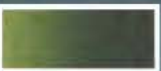

	LT101 or HM101 Gill Red		LT207 or HM207 Tie-In Brown		LT503 or HM503 Sailfish Blue
	LT102 or HM102 Natural Flesh		LT301 or HM301 Bright Yellow		LT504 or HM504 Pale Blue
	LT103 or HM103 Dusty Pink		LT302 or HM302 Golden Yellow		LT505 or HM505 Turkey Blue
	LT105 or HM105 Red Violet		LT303 or HM303 Yellow Ochre		LT601 or HM601 Jet Black
	LT106 or HM106 Mars Red		LT304 Wood Duck Yellow		LT602 or HM602 Paynes Gray
	LT107 Bright Flesh		LT353 or HM353 Transparent Amber Oxide		LT603 or HM603 Neutral Gray
	LT201 or HM201 Rich Brown		LT402 or HM402 Medium Green		LT701 or HM701 Off White
	LT203 or HM203 Dark Brown		LT404 or HM404 Black Green		LT702 or HM702 Pure White
	LT204 or HM204 Mallard Tan		LT451 or HM451 Transparent Light Green		LT703 or HM703 Ivory White
	LT205 or HM205 Cocoa Brown		LT452 or HM452 Transparent Medium Green		LT801 or HM801 Vivid Orange
	LT206 or HM206 Buckskin Tan		LT453 or HM453 Transparent Dark Green		LT802 Mallard Orange
					LTBU Black Umber

## Pearls, Metallics, Pearlescents, Iridescent Colors - 8 oz. \$ 11.75 ea.

	LT932 or HM932 Gold Pearl		LT931 or HM931 Iridescent Gold		
	LT933 or HM933 Bronze Metallic		LT942 or HM942 Bass Green Metallic		LT941 or HM941 Iridescent Green
	LT934 or HM934 Gold Sparkle		LT971 or HM971 Silver Metallic		LT973 or HM973 White Pearl
	LT935 or HM935 Deep Gold Metallic		LT972 or HM972 Silver Pearl		LT975 or HM975 Chrome Pearlescent

**8OZ     \$ 12.00**

## Candy Colors - 8 oz. \$11.75 ea.

	LT271 or HM271 Candy Rich Brown		LT472 or HM472 Candy Medium Green		LT473 or HM473 Candy Dark Green
	LT471 or HM471 Candy Light Green				

NOTE: Samples may vary in Color due to Printing.

LIFETONE	HYDRO-MIST	PRODUCT	QUART	8OZ.
LTLC.....		LIQUID CRYSTAL™.....	\$40.00.....	\$11.75
LT100.....	HM100.....	Basecoat Sealer.....	\$40.00.....	\$11.75
LT900.....	HM900.....	Thinner.....	\$40.00.....	\$11.75
LT901.....	HM901.....	Retarder.....	\$40.00.....	\$11.75
	HM902.....	Thickener.....	\$40.00.....	\$11.75
LT200.....	HM200.....	Gloss Top Coat.....	\$40.00.....	\$11.75



# Oil Paints and Brushes Supplies

Grumbacher® has continued to produce quality oil paint in the tradition of the old masters. Superior quality pigments are combined with highly refined oils in their perfected paint formulas. Grumbacher® is one of the only brands of oil paint to be produced within the United States. Highly recommended by taxidermist and students.

## Academy Oil Set

Burnt Sienna, Alizarin Crimson, Yellow Ochre, Ivory Black, Burnt Umber, French Ultramarine, Viridian, Cadmium Yellow medium, Cadmium Red Medium, Cobalt Blue, Cadmium Yellow Pale  
Each paint tube contains .81oz

AOS \$ 60.00



## Water Fowl Colors

Wood Duck (Bill) White, Cadmium Red Medium, Black, Cadmium Yellow  
(Feet) Yellow Ochre, Burnt Umber

Green Wing Teal (Bill)  
(Feet) Black, White, Burnt Umber, Cadmium Yellow Medium

Widgeon/Redhead (Bill) White, Black, Prussian Blue  
(Feet) Black, White, Burnt Umber, Cadmium Yellow Medium

Mallard (Bill) Cadmium Yellow, Black, Cadmium Red, Raw Sienna  
(Feet) Cadmium Orange

Pintail (Bill) White, Black, Prussian Blue  
(Feet) Black, White, Burnt Umber, Cadmium Yellow Medium

Code	Oil Paints 1.25oz	Price
AYO1	Yellow Ochre	\$ 8.00
APB1	Prussian Blue	\$ 8.00
ARS1	Raw Sienna	\$ 8.00
ACRM1	Cadmium Red Medium	\$ 8.00
APG1	Paynes Gray	\$ 8.00
ACYM1	Cadmium Yellow Med	\$ 8.00
ATW1	Titanium White	\$ 8.00
ARU1	Raw Umber	\$ 8.00
ABS1	Burnt Sienna	\$ 8.00
ACO1	Cadmium Orange	\$ 8.00
AIB1	Ivory Black	\$ 8.00
ABU1	Burnt Umber	\$ 8.00



Sable Flat

Seamless aluminum ferrule with solvent resistant setting and walnut lacquered handle. Overall length is approximately 7 inches.

Code	Size	Price
SF0	Size 0	\$ 1.40
SF2	Size 2	\$ 1.60
SF4	Size 4	\$ 1.75
SF6	Size 6	\$ 2.00
SF8	Size 8	\$ 2.25
SF10	Size 10	\$ 2.50



Camel Hair

Selected brown Kasane squirrel hair is set in seamless aluminum ferrule with walnut lacquered handle. Overall length approximately 7 1/2 inches.

Code	Size	Price
CHPB2	Size 2	\$ 1.75
CHPB6	Size 6	\$ 3.50
CHPB10	Size 10	\$ 8.00



Taklon

Excellent pointing and elasticity for touch-up or graphic arts work. Taklon bristle is securely set in solvent resistant material. Seamless aluminum ferrule and dark maroon lacquered handle.

Code	Size	Price
Taklon0	Size 0	\$ 1.50
Taklon2	Size 2	\$ 2.25
Taklon4	Size 4	\$ 2.75
Taklon5	Size 5	\$ 3.00



Red Sable

Seamless aluminum ferrule with solvent resistant setting and walnut lacquered handle. Overall length approximately 7 1/2 inches.

Code	Size	Price
SB0	Size 0	\$ 1.50
SB1	Size 1	\$ 1.60
SB2	Size 2	\$ 1.75
SB3	Size 3	\$ 1.85
SB4	Size 4	\$ 2.00
SB5	Size 5	\$ 2.15
SB6	Size 6	\$ 2.25
SB7	Size 7	\$ 2.50
SB8	Size 8	\$ 3.00



# Tanning & Mounting Supplies

## Sure-Cure - Liquid Preservative by Paul Witt



**Directions:** Skin out deer head as usual, turn ears, lips and eyes. Flesh off all red meat (rough flesh). Salt or Sodium Sulfate the cape thoroughly. Hang up and let drip for 2 or 3 hours or overnight if needed. The salt or sodium sulfate will draw most of the fluids from the cape. After it has dripped, wash cape thoroughly using Kemal 4 or some other detergent. Rinse in clear water, make sure it is washed enough to get all of the salt out. Flesh cape completely. Put Sure-Cure in spray bottle and spray a moderate coat on raw side of entire cape. It will absorb in a very few minutes. Put a little tanning oil on inside of nose pad and around eyes, and mount as usual.

PWSCQ	PWSCH	PWSCG
Qt. - \$15.45	1/2 Gal. - \$26.95	Gal. - \$43.95

## Sure-Bond - 2 Part Epoxy Adhesive



**Directions:** for Game Heads: Clean form off with lacquer thinner or acetone. Lightly sand detail areas as desired. Mix equal parts of Sure-Bond thoroughly. Apply moderate amount on form with a paint brush. Slip skin on form and make all adjustments within 3-5 hours.

**Directions for Fish Fins:** Apply moderate amount with small brush on both sides of fins. Dries over night and leaves fish fins flexible and slightly flesh colored.

SBQ	SBH	SBG
Qt. - \$27.50	1/2 Gal. - \$47.50	Gal. - \$85.00

## Sure-Scent - Deodorizer



**Taxidermist's Uses:** 4 to 6 ounces per 5 gallons water in pickle baths, soaks & relaxing solutions. More if needed.

**Mounts:** 1 part Sure-Scent to 2 parts water in pump sprayer. Spraying hair of mount, brush in with stiff brush. Repeat if needed. Do not spray on bird feathers.

**Shop:** 1 part Sure-Scent to parts water in pump sprayer. Spray garbage cans, floors, walls, skinning areas and anywhere offensive odors occur.

Sure Scent Qt \$9.00

## Stop-Rot

Saver for birds, fish and mammals!

Stop-Rot was developed by Glen Conely to extend the working time on a green hide by slowing down or stopping bacterial growth and decomposition. Paint on liberally, on the skin side of mammals once the large areas of meat and fat have been removed. It can also be painted on the hair side of un-turned ears. Also may be used as a brush on rinse off slime remover for fish. For birds inject feet and legs with stop rot before freezing to prevent freezer burn. Stop rot will "Float up" Coagulated blood from around bullet holes allowing easy clean up and wipe with paper towel.

SRQ \$24.00

## James' Bird, Mammal & Skull Degreaser



Great for degreasing birds, mammals and skulls. Soak the bird or mammal for 30 minutes or longer as needed. Also good for cleaning your shop tables.

JD \$16.95

## Stain-Away

For Waterfowl - Use a small amount in wash water or to use straight from bottle, use rubber gloves, rub stain lightly with soft cloth or cotton balls until stain is gone.

SAQ Qt. \$ 14.00 SAG Gal \$ 36.00

## Eye Nose Tanning



Cream that helps control natural color and shrinkage. Apply to inside of eyes only and inside or outside of nose pad.

Ent8oz \$6.00  
Ent16oz \$9.00

## Wing, Feet & Velvet Preservative



Inject antlers about every 2 to 3 inches from base of antlers to the end of the points. Inject into veins if possible. Then spray outside of the antlers with spray bottle. Inject fleshy areas with syringe.

WVFPT PT. \$10.50  
WVFQT QT. \$ 17.00

## Snake Tan



1 oz. tans approx. 1-48" Snake. Instruction included. Used to preserve bugs, recondition reptile boots, shoes, etc.

RST4 4oz \$ 16.70  
RST8 8oz \$ 29.55  
RSTQ Qt. \$ 53.65



# Tanning & Mounting Supplies

## James' Cape Shampoo



Ready to use Shampoo . Do not Dilute . If diluted Concentrate will make up to 8 gallons . Leaves hair apple smelling good . Shine and luster look.

JCSG \$ 12.00



## Bactericide

Kills bacteria and stops hair slippage. Use 1 to 2 oz. In Final wash water.

BTCQ	Qt. \$ 9.95
BTCG	Gal \$ 32.95

## PH Strips



PH strips are a must for any controlled tanning. Ranges from 0 to 6.0 control colors are indicated on the dispenser.

Phstrips \$ 9.95

## Knoblocks Products



## Kemal 4

Relaxer, skin prep., degreaser and cleanser. All in one. Prepares the skin to accept tannin. Relaxes the skin for easier shaving. For Mammals, Birds and Fish.

KEM4Q	Qt. \$ 23.55
KEM4G	Gal \$ 63.40



## Protex Pre-Soak

A water-soluble compound concentrated solution used in the last rinse of the tannin process and rehydration bath. Use 1 oz per gallon of water

KPPSQ Qt. \$ 60.45



## Protex Mt. Care

Used for protection of hair, fur & feathers from damage. Use on new & existing mounts. Wipe into hair, or add to the sawdust in the fur drum. This product is not water soluble.

KPMCQ Qt. \$ 37.95



## Stop Slip

Will Permanently set hair that is loose or starting to slip. Will also set the velvet on horns. Spray from an atomizer or sponge on.

SSLQ Qt. \$ 12.25



## Liqua-Tan

A liquid tan which will produce soft skin, good stretch, longevity and minimal shrinkage. Skin can be mounted same day or as a dried, tanned skin.

KLTQ	Qt. \$ 28.50
KLTGA	Gal \$ 79.30



## Reptile Tan

Liquid tan for snakes and other reptiles, leaving them soft and pliable.

RTP	Pt. \$ 15.85
RTQ	Qt. \$ 26.85



## Hair Sheen

Gives hair and fur a clean shine. Can be applied directly to the hair or mixed with sawdust in the fur drum. Removes grease & grime from hair leaving it with a clean smell.

KHSQ Qt. \$ 22.25



## Para-Tan

A very unique tan designed for tanning but can also be used for fur dressing. Has excellent stretch, will not wash out, good hair setting and won't yellow.

PTG5	5lb. \$ 34.80
PT10	10lb. \$ 65.67



## Para Soft

A white tanning oil specifically designed to be used with Para Tan. Penetrates the skin and attaches to various sites to produce a soft, white leather.

KPSPT	Pt. \$ 15.10
KPSQT	Qt. \$ 25.80



## Relax R

A oil based relaxing agent which can be used to relax dry salted skins or tanned skins prior to mounting. Can be used in the rehydrating solution or cut with water and applied to skin.

KRRQ Qt. \$ 19.60



## Liqua-Soft Tanning Oil

A tanning oil made with a special blend of oils and softening agents formulated to be used in conjunction with Liqua-Tan to produce more supple or softer skins for flat skins or rugs.

KLSQ Qt. \$ 28.35



## Safety Pickle

Used for pickling skins before tanning. After rehydration, rinse skins and drain well. Place them in a solution of 1/2 fluid oz. of Safety Pickle and 1 lb. of salt per each gallon of water. Comes with complete instructions.

KSPQ	Qt. \$ 20.80
KSPG	Gal \$ 63.20



# Casting and Mounting Supplies



## APOXIE Sculpt

If you're looking for a more Economical sculpturing compound with a slower set-up time then THIS IS IT! This compound has a flat finish that makes repairs and painting easier great for fish and gamesheads. COLORS: Natural, Black, Brown & Flesh.

AS4	4lbs. \$ 49.50
AS1	1lb.. \$ 26.50
AS1/4	1/4 lb. \$14.00



## Paper Mache

Used for making skull caps and multiple other uses. Setup time is about 30-45 mins

This is an all around multi-purpose, non hazardous, no asbestos mache, made with virgin paper pulp. This fine textured mache has a white body, its lightweight, strong & very versatile. Accepts paints (acrylics, oils watercolor) & most decorating mediums.

PM 5 lbs \$ 23.00



## Fix-It

Excellent for antler repair. Working time 2-3 hrs. Sets rock hard in 24 hrs.

Its clay like feel resists sagging and drooping; holds small details & impressions extremely well. Its firm/fine grain texture backed with fiber technology is great for many uses ranging from detailed & intricate sculpting to a multitude of repairs.

Fixit 1/4lb	\$ 15.00
Fixit 1lb	\$ 28.50



## Apoxie Safety Solvent

Works great with other brands of epoxy. Recommended for smoothing, seaming, feathering, texturing, tooling, and quickly cleaning your tools, brushes and surfaces. Remove excess material, fingerprints, unwanted residue and film from your project using a couple drops of Safety Solvent on a paper towel, brush or Q-tip before epoxy sets up. Also removes saps, inks, markers, paints & stains from fabrics, brushes and other surfaces. (Always test surface or fabric for color fastness & structure)

AVSS1oz.	\$5.50
AVSS4oz	\$11.00
AVSS16oz	\$23.50



## Critter Clay

Definitely the "Premium Clay" in taxidermy. Specifically formulated for minimal shrinkage and extra strength. Self hardening and cleans up with water.

COLORS: Natural or WHITE

CC1	1.LB \$ 8.80
CC5	5 LBS. \$19.80
CC25	25LBS \$ 63.00



## Magic Sculpt

You choose the color, eliminate wasted painting time. Comes in 2 parts that you mix 50/50.

Colors: 1lb Natural, Flesh, Black & White.

MSCULPT1	1 lb kit \$ 15.90
MSCULPT5	5 lbs kit \$ 41.00



## Magic Smooth

A two part epoxy compound used to smooth or fill in areas. Mix equal amounts of each. Allow approximately 30-40 minutes working time. Dries hard in about 2-3 hours while still maintaining slight flexibility.

MS4lb 4 lbs kit \$ 60.00





# Mounting & Miscellaneous Supplies

## Sodium Sulfate

Ideal wash to soften hides, help prevent the puckering and break downs the oil in the last oiling step. Bleaching agent, aids in whitening white fur and hair. Good for pre-soak to remove stains such as urine, etc. Also after tan washes to help reduce certain tanning stains. Many tanneries prefer it to common salt for curing hides.

SS5 5LBS	\$7.00
SS10 10LBS	\$12.00
SS25 25LBS	\$23.50
SS50 50LBS	\$43.60

## Sal Soda Skull Bleach

Use 1 cup to each gallon or water. A small amount of Clorox may be added if desired. Slow boil, check skull after 30 min. Boil longer if needed. Avoid antler contact. Rinse well with Sodium Bicarbonate to neutralize and kill strong odors.

SKB5	5lbs	\$ 10.00
SKB10	10lbs	\$ 16.50
SKB50	50lbs	\$ 71.80

## Sodium Bicarbonate

Use to neutralize acids in tanning solutions. Requires 1/2 as much Borax. Do not confuse this with Sodium Carbonate, which has a different actions. Neutralizes strong odors and is a useful cleaner.

SODB5	5lbs	\$ 7.50
SODB10	10lbs	\$ 13.00
SODB50	50lbs	\$ 57.00

## Powder Borax

Great for absorbing or drying out small mammals, turkey and birds for easier fleshing. It is a white fine powder. Also, is used in preserving formula for fish.

PB5	5lbs	\$ 10.35
PB10	10lbs	\$ 19.50
PB50	50lbs	\$ 96.50

## Dry Preservative

It is a white powder. That is used after fleshing the hide and can be used before to help with fleshing. Ideal for rub-in hide preservative.

DP5	5lbs	\$ 12.50
DP10	10lbs	\$ 22.50
DP25	25lbs	\$ 49.50

## Citric Acid

Product is a natural pickling powder which is a safer alternative than Formic Acid tanning.

CA5	5lbs	\$ 27.00
CA25	25lbs	\$ 107.50
CA50	50lbs	\$ 206.75

## Aluminum Sulfate

Used in the tanning industry with Leukanol, iron-free, it will leave the hide in a pliable condition with a natural light color. This is a pickle tan. Will help with setting the hair.

AS5 5LBS	\$9.75
AS10 10LBS	\$18.05
AS25 25LBS	\$34.65
AS50 50LBS	\$82.45

## Dry Potter Clay

This product can be mixed with Dextrin to make your own hide paste. For Example use 2 cups of clay to one part hidepaste. Add water to desired thickness. Can be used to wet and smoothin forms or voids. Can be added to certain mache recipes.

DPC10	10lbs	\$ 8.95
-------	-------	---------

## Alligator Clay

This is a premum clay.Works great for earbases, antler bases and fish work. The Clay is sticky to touch which will help hold the ears up. Is great for filling in voids.

GC25	25lbs	\$ 18.00
GC50	50lbs	\$ 34.00



## Fish Filler

Mix powder thoroughly with water. Insert in fish as filler. It is light weight filler.

FF5	5lbs	\$ 7.00
FF10	10lbs	\$ 10.00
FF25	25lbs	\$ 24.00



## Molding Plaster

For making skull caps or casting. Just add water to powdered mixture.

MP5	5lbs	\$ 10.00
M10	10lbs	\$ 17.00



## Ear Base

Just add water and form to make ear butts. Very little shrinkage.

EB5	5lbs	\$ 9.50
EB10	10lbs	\$ 12.50
EB25	25lbs	\$ 25.00



# Smooth-On Products

## Dragon Skin

Dragon Skin is a neutral water white translucent and can be colored with SILC Pig pigments for creating color effects or for creating a paint that can be painted on to an existing Dragon Skin, it is also used for orthopedic and cushioning applications.

DS2	2 lbs. \$ 36.75
DSG	Gal. \$201.88



## SmoothCast 300

Smoothcast 300 has the lowest viscosity of any casting resin available. SC300 pours literally like water and yields bright white, bubble free castings in 10 minutes. This material has no order and contains no solvents. Very low shrinkage makes this fast cast resin ideal for turkey, Fish and duck heads and also reptiles.

SC300 2lbs	\$ 29.75
SC300 Gal	\$ 116.50



## SmoothCast 320

This product is the same as SmoothCast 300 but light-beige in color. Idea for antler reproductions. Castings are tough, durable and can be easily sanded.

SC320 2lbs	\$ 29.75
SC320 Gal	\$ 116.50



## MoldMax 30

A new generation of inexpensive tin-cured silicone rubber mold product. Mold Max 30 has exceptional tear strength and very good dimensional stability making it ideal for antler reproductions.

MM30	2 lbs. Kit	\$ 36.60
------	------------	----------



## SmoothCast ONYX

ONYX is a mercury-free urethane resin that cures at room temperature to a deep black, solid plastic. ONYX plastic can be polished and buffed to a high gloss shine.

SCO2	2lbs. \$ 31.85
------	----------------



## PoYo Putty 40

PoYo® Putty 40 is a two-component mold making silicones (tin catalyst) that can be mixed and applied "on site" – directly to almost any model. PoYo® Putty will hold any vertical surface and capture even the finest detail - perfect for making strong rubber molds that can be used within minutes.

PPQ40 Qt kit	\$ 50.65
PPG Gal kit	\$ 135.25



## Mold Release Ease Release 200

Is a general purpose mold release that works with silicone and urethane mold making rubbers.

MER 12oz	\$ 22.40
----------	----------



## Smooth-On DVD

Smooth on dvd is a must have for creativity. To master your skill level and learn more information about casting and products.

SQDVD	\$ 16.95
-------	----------





# Hide Paste, Glue and Misc

## Kenny's Stick-IT

Hide Paste works well with tan, dry preserve and Sure Cure Method hides. Sand or wire brush form. Clean up with soap and water. When placing hide over James' forms, you can mist Sure Cure or water over Stick-IT to help slide easier. Keep out of reach of children.

SIQ	QT.	\$ 14.00
SIG	Gal	\$ 40.75
SI2	2 Gal	\$ 71.50
SI5	5 Gal	\$ 172.25



## Sure-Bond

*Directions:* for Game Heads: Clean form off with lacquer thinner or acetone. Lightly sand detail areas as desired. Mix equal parts of Sure-Bond thoroughly. Apply moderate amount on form with a paint brush. Slip skin on form and make all adjustments within 3-5 hours.

SBQ	QT.	\$ 27.50
SBH	H/Gal	\$ 57.75
SBG	Gal	\$ 103.95



## ZAP Kicker

Is a accelerator for ZAP-A-GAP Glue. Will not craze most plastics. Solves most tough to bond combination of materials.

ZK5oz	\$9.70
-------	--------



## ZAP-A-GAP Glue

Gap filling formula. Bonds virtually anything.

ZAG	1oz	\$ 9.70
ZAGGS	Gel Small	\$ 2.00
ZAGGLg	Gel Large	\$ 9.40



## Mannikin Prep Adhesive

With new and improve features is specially formulated for use as an adhesive coat between any hide paste and all form surfaces. Bonds to urthane plastic ,fiberglass, wood and mache . Works great for earliners and habitat bases.

GBMP	16.75oz	\$ 15.00
------	---------	----------



## Modge Podge

Used for making nodules on the noses of deer, fish fins and multiple other uses. Water base sealer, glue & finsh. Apply a thin coat dry 20 - 30 min between coats. This is not an all purpose sealer. 8-oz

MPG	\$ 6.10
-----	---------



## Flock - Red or Black

Chopped rayon flock .Covers approximately 75-100 sq ft per pound

Use this for horn mounts or habitats.

Spray or brush adhesive sprinkle on with a sifter. Repeat as needed.

CFR	1/4lb	\$ 9.95
CFBK	1/4lb	\$ 9.95



## Texture Bottle

Easy to use texture bottle. Great for deer , antelope or any animal for nose bumps. Applicator is air tight non - clogging and provides for precise applications and placement of modge podge.

FLA	1.25oz	\$ 8.00
-----	--------	---------





### UltraLight Bondo

Use bondo method in earliners or to put forms together. Comes with hardner. Gallon

ULBG	\$30.25
------	---------



### Fiberglass Chop

Used in mixing with Bondo for strengthing ears For making earliners. It is a very fine chop 1LB.

CF1	1 lb bag	\$ 8.50
-----	----------	---------



### Brown Eye Wax

Used to fill around eyes and multiple other uses. Can be easy to mold using a hair dryer to warm it up. Comes in the color brown. 1oz.

EW1	\$ 1.50
-----	---------



### Premium Foam Kit

For making habitats and form alterations.

PFKH	1/2G	\$ 70.00
PFKG	Gal	\$ 130.00



### Taxidermy Magic

Spray on to add shine, repel dust and enhance appearance of mount. Saves hours of work.

TM16	16oz	\$ 7.25
TM32	32oz	\$ 10.00



### Aldburgh "Wide Mouth" Wash Bottles

Is easier to pour your liquid in. Multi uses in shop.

Code	Size	Price
WMWB4	4oz.	\$ 8.25
WMWB8	8oz.	\$ 9.50
WMWB16	16oz.	\$ 12.00



### Grooming Spray Bottle

Very durable for putting " Sure cure " Spray preseve and cleaner , etc.

Code	Price
GSB22oz	\$ 2.50



### Wash Bottles

For a fine needle point spray, easy to squeeze.

Code	Size	Price
WB4	4oz.	\$ 6.50
WB8	8oz.	\$ 7.50
WB16	16oz.	\$ 9.50



### Acid Brush

Multi Purpose bristle brushes. Great for applying paint to any surface.

Code	Pieces	Price
AB	Single	\$ .025 EA
ACBD	Dozen	\$ 2.50



### Artificial Snow

Code	Price
AS 1LB	\$ 4.00



# Fleshing Knives and Sharpners



Skinning Knife 2 1/2"

VSK2 1/2	\$ 7.25
----------	---------



Skinning Knife 3"

VSK3	\$ 7.25
------	---------



Skinning Knife 4"

VSK4	\$ 8.60
------	---------

Dexter  
Skinning Knife

DSK3	\$ 9.50
------	---------

Dexter Paring Knife

Great for fleshing around eyes and nose.  
Easy to sharp, has soft grip handle. Made  
in USA with Dexsteel. Sani-Safe

DPK3	\$ 8.50
------	---------

Dexter  
Fleshing Knife

4 1/2" Round Tip.  
Made of carbon steel

DFK4	\$ 18.00
------	----------



Pelter Knife

Made of 440 Stainless steel  
2 1/2" blade . Handle 4 1/2"

PSCK	\$ 11.95
------	----------



Fleshing Knife  
White Handle

Has white durable polypropylene  
handles. The knife's blades are  
made of 440 stainless steel for  
a razor sharp edge. 4 1/2"

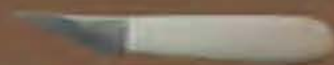
FKWH	\$ 11.95
------	----------



Fish Skinning Knife

Flesh can be cut away with out dan-  
ger to the skin. Serrated edges

FSKS	\$ 7.50
------	---------



Necker Knife

12-1/2 x 21-1/4 Blade used for  
fleshing game heads, flat skins, &  
scraping. Beavers to Raccoons

NK	\$ 74.50
----	----------



Skife Knife

A handy knife that makes thinning  
around lips and eyes made easy.  
Increases speed and accuracy.

SKNK	\$ 7.50
------	---------

Skife KnifeBlades

SKBR2	20ct.	\$ 9.50
SKR1	100ct.	\$ 29.00





# Fleshing Machine and Sharpners



Ceramic Knife Sharpener

Measures 1 1/4" round  
Ceramic end 8" long,  
Handle 4 1/2" long

CKS \$ 3.80



Ceramic Knife Sharpener

Jumbo Measures 3  
1/4". Ceramic end  
11 1/2". handle 4  
1/2"

JCKS \$ 8.50



The Edge Slider Sharpener

V shape tungsten carbide cutting  
heads for precision sharpening. Just 3  
or 4 strokes and it's sharp!

DTE \$ 11.55

Tail Zipper

Fast & Easy Way to Split Tails

TZ \$ 4.85



Tail Slitting Guide

Use after stripping for a  
straight and true cut.

TSG \$ 4.50



Magnetic Knife Holder

This knife bar comes with mounting screws so it can  
be easily installed to your wall. Black wall-mounting  
bar that securely holds knives in place with a mag-  
netic strip.  
18" Long.

MKH \$ 9.50



## FLESHING MACHINE AND PARTS

### The Original

#### Flesh-All Mini-flesher

Our original model is an air powered, hand held fleshing / shaving tool that al-  
lows the user to quickly and easily flesh and thin hides for taxidermy and tanning pur-  
poses.

The Mini-flesher uses a thin serrated blade rather than a fleshing type blade like  
the big circular fleshers. Our blade works on the principal of a high speed tearing  
action rather than a sharp cutting action.

The mini-flesher is a variable speed unit, the blade guard is fully adjustable allow-  
ing a wide range of cutting depths. The guard is very close to the blade allowing  
total control when fleshing around tender areas.

The recommended air supply for the Mini-flesher is an air compressor of 2 horse  
power or larger with a comparable sized tank. Recommended running pressure  
ranges: 45 to 90 p.s.i. The Mini-flesher uses approximately 4 cubic feet per minute  
of air at 90 pounds of pressure to run at full speed.



12" Fleshing Blade

12" dia. Stainless Steel with extra  
wide 1/4" lip. Great for fleshing  
big game.

FB \$ 91.40



OMF \$ 295.00



Flesh-All Mini Flesher  
Replacement blades

MFB \$ 29.25



# Havels Scapel Handles and Blades

Our original quality blades are manufactured using the classic precision manufacturing process that's been the standard for a quarter of a century. These are the Havel's® blades you have known and trusted since 1981. Individually foil-wrapped, sterile scalpel blades, 100 per box.

## Scapel Handles



Fine quality surgeon's scalpels which will accommodate replaceable blades. Available with a heavy handle for a good grip or regular handle for a delicate touch. Both work well for skinning birds, small mammals, splitting lips and preparing capes. Both use the same replaceable blades.

Code	Description	Price
SH3	Slim Handle #3	\$ 5.00
SH4	Slim Handle #4	\$ 5.00
SH5	Heavy Handle #5	\$ 8.00
SH6	Heavy Handle #6	\$ 8.00
SH8	Heavy Handle #8	\$ 8.00

#4 & #6 Handle Accepts  
#20, #21, #22, #23 & #24 Blades  
 #3 & #5 Handles Accepts  
#10, #11, & #15 Blades  
#8 Handle, #60 & #70 Blades

## Blades



Code		Price	Code		Price
SB10	100ct	\$ 28.95	SB22	100ct	\$ 28.95
SB11	100ct	\$ 28.95	SB23	100ct	\$ 28.95
SB15	100ct	\$ 28.95	SB24	100ct	\$ 28.95
SB20	100ct	\$ 28.95	SB60	100ct	\$ 48.95
SB21	100ct	\$ 28.95	SB70	100ct	\$ 51.95

# Cincinnati Scalpel Handles and Blades

Since 1938, Cincinnati Surgical has been reconized as an industry leader in manufacturing high quality surgical blades, scalpels.

Our blades are manufactured with a unique cutting edge design. One side has a smooth razor edge that is supported by a micro serrated edge for a consistently sharp edge.

Premium Taxidermy Blades

Precision : US company with English manufacturing

Consistency : Zero blade defects

Durability : Longer Lasting edge for more cuts per blade

ISO : Blades and handles designed to fit properly.

**NEW**

## Scapel Handles



The Swann Morton and Cincinnati Surgical Taxidermy Blade Collection is designed for the professional taxidermist and those who expect quality.

Code	Description	Price
CINH3	Slim Handle #3	\$ 8.40
CINH4	Slim Handle #4	\$ 8.40
CINH6	Heavy Handle #6	\$ 15.40
CINH8	Heavy Handle #8	\$ 15.40

#4 & #6 Handle Accepts  
#20, #21, #22, #23 & #24 Blades  
 #3 & #5 Handles Accepts  
#10, #11, & #15T Blades  
#8 Handle, #60 & #70 Blades

## Blades



Code		Price	Code		Price
CINB10	100ct	\$ 32.25	CINB22	100ct	\$ 32.25
CINB11	100ct	\$ 32.25	CINB23	100ct	\$ 32.25
CINB15T	100ct	\$ 32.25	CINB24	100ct	\$ 32.25
CINB20	100ct	\$ 32.25	CINB60	100ct	\$ 51.10
CINB21	100ct	\$ 32.25	CINB70	100ct	\$ 60.90



# Scissors and Tweezers



Chinese Scissors  
Curve Tip

Chinese Scissors great for trimming fat and working around eye and nose.

CSCT \$ 4.75



Chinese Scissors  
Straight

Chinese Scissors great for trimming fat and working around eye and nose.

CSS \$ 5.75



Double Curve  
Scissors

Taxidermist grade stainless steel for the hard places to reach and angle.

TDCS \$ 14.50



Embroidery Scissors

Stainless Steel 3.5 " Fine point

ES \$ 4.00



Scissors  
Straight or Curved

Very sharp and good for trimming

SS6S	6" Straight	\$ 6.00
SS6C	6" Curve	\$ 6.00
SS5S	5" Straight	\$ 5.00
SS5C	5" Curve	\$ 5.00



Large Handle  
Scissors

Large handle creates easy hold. Sharp edges creates precise cut.

GS7	7 3/4"	\$ 8.00
GS5	5"	\$ 6.00



Taxidermy Scissors

These large handle scissors are designed from high quality steel. Used for final fleshing Round the eyes, nose and lips of all game heads and birds. Multi uses around the shop available in three sizes.

TSS4	4"	\$ 5.00
TSS6	6"	\$ 6.00
TSS8	8"	\$ 7.00



Taylor's Scissors

Excellent for cutting felt, fish bones and heavy material. Well constructed and inexpensive. 10"

TS10 \$ 8.00



FORCEPS

Great if you need to clamp feathers together or fur.

FS6	6" Straight	\$ 4.00
FC6	6" Curve	\$ 4.00
FS12	12" Straight	\$ 8.00
FC12	12" Curve	\$ 8.00



Tweezers

Can be used to move feathers around.

ST12	12"	\$ 7.50
ST10	10"	\$ 5.75
ST7	7"	\$ 4.50
ST4	4 1/2"	\$ 3.50



Small Tweezers

Curve tip or Slant Great All Around

CT4	4 1/2" curve	\$ 3.50
TS5	5" Slant	\$ 3.50
CT7	7" Curve	\$ 4.50



Multi purpose Scissors

Used to cut any type of tape really good for fin back tape. Made of Stainless Steel.

MPS \$ 5.00

Fish Shears  
Heavy Duty  
Straight or Curved

Great for cutting fish skull and small animal bones.

HDFSS	Straight	\$ 24.00
HDFSC	Curve	\$ 24.00



Fish Shears  
Med Straight or Curved

Great for cutting fish skull and small animal bones.

FSMS	Straight	\$ 11.95
FSMC	Curve	\$ 11.95





# Hide adjusting Tools , Ear Openers and Misc.

HIDE ADJUSTING TOOL, EAR OPENERS & MISC



Hide Adjusting Tool

Hide adjusting tools allow for a better grip when adjusting hide without pulling the hair off the hide.

HAT	\$ 12.50
-----	----------



Econo Hide-Adjusting Tool

Hide adjusting tool allowed for pulling on mammals fur.

EHAT	\$ 7.50
------	---------



Metal Placing Spike

This tool is great for tacking, pulling and placing hide in proper position on your forms. Also great for holding ears in place.

MPS6	6"	\$ 8.05
MPS8	8"	\$ 9.40



Sm Ear Opener with Tail Puller

Used for easier ear opening. Strong light weight aluminum

EOS	\$ 28.85
-----	----------



Lg Ear Opener

Used for easier ear opening. Made for deer and elk.

EOL	\$ 23.65
-----	----------



Leather Puncher

Punch any hole size to start sewing.

LP	\$ 13.00
----	----------



Form Prep Brush

Used for roughing or scratching up forms or earliners for providing better adhesive stick. Brass coated, hardened steel resists wear.

FPB	\$ 7.00
-----	---------



4-n-1 Rasp

4-n-1 with 2 different textures. For rasping into hard foam.

4N18	8"	\$ 10.00
4N10	10"	\$ 12.00



Form Roughers

Big rougher is designed for large areas on forms. Has a very unique handle. 8 1/4" long. Straight or Curved.

JFRL	\$ 19.95
------	----------

Large Replacement Pads:

RRP	\$ 12.95
-----	----------

Small rougher for use hard to get places. 8 1/4" long. Straight or Curve.

JFRS	\$ 17.95
------	----------

Palm rougher designed to fit your palm. Versatile when it comes to roughing forms. 5" long

JPR	\$ 17.95
-----	----------

All Roughers have leather strap to hang it up when finished.



Hand Rasp

Specify Letter

A, B C, or D \$ 3.00ea  
Complete Set \$ 10.00

HR	Ea.	\$ 3.00
HRS	Set	\$ 10.00



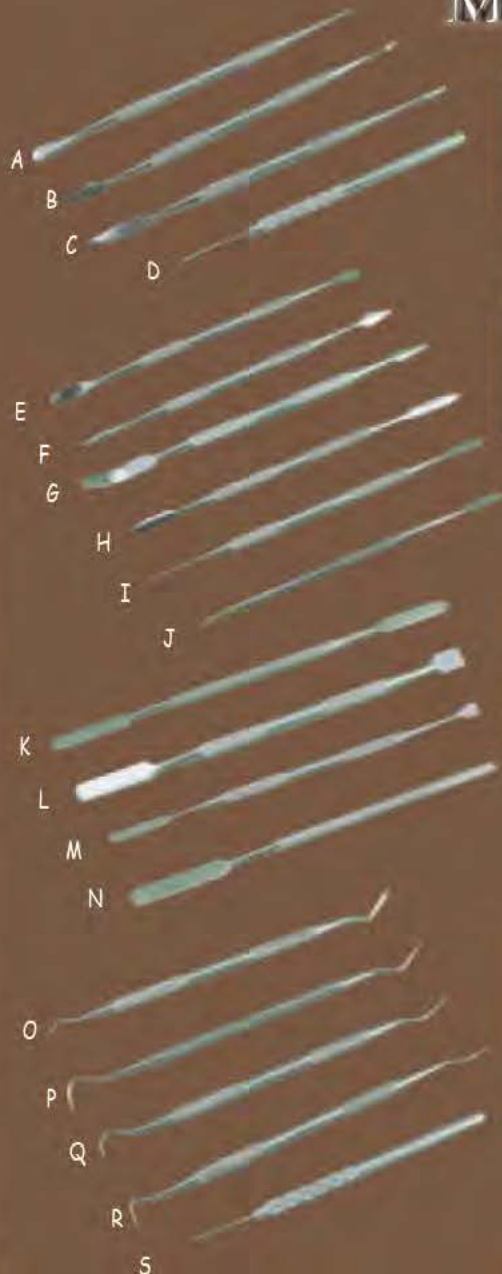
Small Files

Best for rasping in the nose of Deer and many more mammals.

SFile	Ea.	\$ 1.00
SFS10	Set	\$ 11.00



# Modeling Tools



## Epoxy Tools

A thru D \$5.00 ea.  
Specify Letter

## Epoxy Tools

E thru J \$5.00 ea.  
Specify Letter

## Epoxy Tools

K thru N \$5.00 ea.  
Specify Letter

## Dental Tools

O thru S \$3.00 ea.  
or 4 for \$10.00  
Specify Letter

**Bird Skin Defatting tool**  
A tool for removing fatty  
tissue around tail shafts.  
\$7.50

## Modeling TL-401

\$4.50 ea.

## Modeling TL-402

\$4.50 ea.

## Modeling TL-403

\$4.50 ea.

## Glaze Cutter GBCT

\$6.35 ea

## Lace Tool K21

\$4.50

## Small Cutter K31

\$5.20

## Spiral Brush

TL-412  
\$5.50

## Trimmer K34

\$3.85

## Cut-Off Needle PCN

\$2.60

## Sabre Saw

\$5.15 ea.

## Metal Placing Spike

This tool is great for tacking, pulling and placing  
hide in proper position on your forms.

MPS6	6"	\$ 8.05
MPS8	8"	\$ 9.40

## Placing Spike

This tool is great for tacking, pulling and placing  
hide in proper position on your forms.

PS6	6"	\$ 10.80
PS8	8"	\$ 10.80
PS12	12"	\$ 10.80

## Lip Tucking Tool

This tool is great for tucking made in the USA.  
Measures 6 3/4" Brass

LLT \$ 14.75

## Pusher Tool

PMT \$ 2.50

## Dan D Noser

This roller has imprinted texture  
of a deer's nose pad. This tool  
is a must for a competition type  
nose, and can be done within 3-5  
Minutes.

DDN \$ 35.95

## Lip Tucking Tool 2 N 1

This tool can be used to tuck lips. Also  
knife on the other end is great for cutting  
or thinning. Has a wooden handle to be  
more comfortable.

LPTS	5"	\$ 5.00
LPTM	7"	\$ 7.00



# Premium Modeling Tools and Sculpting

All the right tools for your modeling and carving needs. Each tool is made from solid, high-grade stainless steel and handcrafted in a variety of essential shapes and contours for intricate modeling, carving, shaping and clay removal. The bright colored rubber ensures secure gripping and makes it fun to use and easy to find. These tools are made to last a lifetime and can be sharpened.

Mini Cheek Tool \$ 5.00 ea



Mini Cheek Tool \$ 5.00 ea



Mini Cheek Tool \$ 5.00 ea



Mini Cheek Tool \$ 8.50 ea



Cheek Scraper \$ 8.95 ea



Premium Knife \$ 6.75 ea



Premium Modeling Tool \$ 8.00 ea



Premium Modeling Tool \$ 8.00 ea



Premium Modeling Tool \$ 8.00 ea



Premium Modeling Tool \$ 8.95 ea



Premium Modeling Tool \$ 7.50 ea





# Hardware

## Needles, Pins and Thread

### Cape Needle ( 3 Sided )

CN6	6"	\$3.25
CN7	7"	\$3.50
CN8	8"	\$3.55

### Straight Needle ( 3 Sided )

ST2	2"	\$1.00
ST2 1/2	2 1/2"	\$1.00
ST3	3"	\$1.00
ST4	4"	\$1.50
ST5	5"	\$1.50
CST1 1/2	1 1/2"	\$1.00
CST2	2"	\$1.00
CST2 1/2	2 1/2"	\$1.00
CST3 7/8	3 7/8"	\$1.50

Diameter is smaller on Cst needles. Eye hole is the same diameter as needle.

### Curved Needle ( 3 Sided )

HCN16	1 1/4"	\$1.00
HCN12	1 1/2"	\$1.00
HCN8	1 3/4"	\$1.00
HCN4	2 1/2"	\$1.25
HCN1	3"	\$1.25

### "S" Curve Needle ( 3 sided )

SN4	2 3/4"	\$1.75
SN3	3 3/4"	\$1.75
SN2	4 1/2"	\$1.75
SN1	5 3/4"	\$1.75

### 150 Style Needle 3 ( Sided )

LSN2	2"	\$1.50
LSN2 1/2	2 1/2"	\$1.50
CLSN	1 1/2"	\$1.50

### Cape Thread B-50 Bowstring

Black polyester waxed sewing thread. Strong enough for most hides. Leaves a flat seam when pulled tight.

B50 1/4lb	\$11.25	Blk or Brn
B50 1lb	\$30.95	Blk or Brn

### Cape Thread

White, waxed thread. Works great for lighter coats and facial areas. Can be split, stained or painted.

### Flat Lacing Type White

CTSM	\$7.65
CTLG	\$23.10

### "T" Pins

Great for pinning around eyes and lips. Steel Nickel Plated. reusable.

TP16	1"	1/2LB	\$19.75
TP20	1 1/4"	1/2LB	\$19.75
TP24	1 1/2"	1/2LB	\$19.75
TP28	1 3/4"	1/2LB	\$19.75
TP32	2"	1/2LB	\$19.75

### Upholster Pins

UP3	3"	\$3.25/DZ	\$32.00Gr
UP3 1/2	3 1/2"	\$3.50/DZ	\$35.00Gr
UP4	4"	\$3.75/DZ	\$45.00Gr

### Bank Pins

BP20	1LB	1 1/4"	\$15.85
BP24	1LB	1 1/2"	\$15.85
BP28	1LB	1 3/4"	\$15.85

### Black-Insect Pins

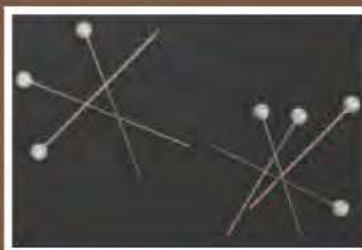
Small diameter, black steel pin. Can be left in mount and painted over if desired

BIP 1 1/16	\$13.95 1/2lb	\$7.00 1/4lb
BIP 1 1/2	\$15.50 1/2lb	\$7.75 1/4lb
BIP 2	\$27.00 1/2lb	\$13.50 1/4lb

### Baro Pins

Small diameter, 3 Sizes. Used in small mammals and birds.

EP20MM	100ct	\$28.50
EP30MM	100ct	\$29.60
EP100MM	100ct	\$31.65



### Pearl Head Pins

Sturdy, small diameter pearl-headed pins.

PHP2	100CT	\$4.50
PHP2 1/2	100CT	\$5.50



### Sewing Palm

No need to stick yourself, get a leather palm saver. Left Or Right handed.

SPR	\$14.50
SPL	\$14.50



# Fish Tools and Miscellaneous

Cheek Tool is used to get the meat out of the inside of fish cheeks.

Cheek Tool SR2

8R2 \$5.95



Cheek Tool KSP1

KSP1 \$6.55



Cheek Tool KSP4

KSP4 \$6.55



Fish Flesher A

FFA \$8.50



Fish Flesher B

FFB \$8.50



Fish Flesher C

FFC \$8.50



Fish Flesher D

FFD \$6.50



Fish Flesher E

FFE \$6.50



Fish Flesher F

FFF \$6.50



Fish Fleshers are used to scrap meat away from bones and skin on fish. Useful and time saving.

## MAC-Z SCALERS



MS1	Extra Small, (Small Trout )	\$32.55
MS2	Sm. Med ( Large Trout )	\$32.55
MS3	Medium ( Small Bass )	\$32.55
MS4	Medium ( Large Bass )	\$32.55
MS5	Lg ( X-Lg Bass / Stripper )	\$32.55
MS6	X-Lg ( Med Stripper )	\$32.55
MS7	XX-Lg ( Lg Stripper )	\$32.55

The Mac-Z Scaler reproduces the scale pattern of a fish. It will save time, hide epoxy covered seams. Available in 7 sizes.

Fish  
Skinning Knife



Flesh can be cut away with out danger to the skin. Ser-rated edges

FSKS \$ 7.50



Fish Shears  
Heavy Duty  
Straight or Curved

Great for cutting fish skull and small animal bones.

HDFSS	Straight	\$ 24.00
HDFSC	Curve	\$ 24.00



Fish Shears  
Med Straight or Curved

FSMS	Straight	\$ 11.95
FSMC	Curve	\$ 11.95



Thimbles

TH00	51/64 XL	\$4.25
TH0	21/32(12)	\$4.25
TH2	43/64(10)	\$4.25



Fin Backing Tape

A breathable tape to be used on fish fins to repair. Apply when fish is dry. Then add your fin backing cream.

FBT-1	1"x10yds	\$3.35
FBT-2	2"x10yds	\$6.40
FBT-3	3"x10yds	\$8.60



# Tools and Hardware

## Calipers

Made of high quality aluminum, adjustable with thumb screw. Used for transferring measurements or measuring the thickness or diameter of an object. Available in three sizes.

C8	8"	\$13.00
C10	10"	\$13.00
C12	12"	\$13.00



## Eye Caliper

Made of solid brass. Used to measure eyes to get exact fit.

BEC	\$ 12.00
-----	----------



## Tape Measures

Retractable 60" tape measure has inches and centimeters. To get the accurate measurement.

JMT	\$ 3.00
-----	---------



## Head Strap Visor Magnifier with Multi Lens

Very important magnifier due to its high degree of usefulness within a wide range of different projects and task.

Features:

- Professional Quality
- Multiple Lens Magnifications(1.0x, 1.5x, 2.0x, 2.5x, 3.5x)
- LED Light Source
- Tilting Function
- Cushioned Nose Pads
- Adjustable Headband
- Interchangeable Lens Frames
- Requires 3-AAA Batteries (Batteries Not Included)

OVMLML	\$ 16.00
--------	----------



## Opti-Visor w/Light

Fits easily over regular or safety glasses. Dual lights on both sides with switches. Adjustable comfortable head band.

OVWL	\$ 12.00
------	----------



## Opti-Visor

Adjustable head strap with hook and loop fastener. Fixed and flip lens magnification.

OV	\$ 10.00
----	----------



## Game Bags

Great for freezing durable and clear see through bag measures 8 x 4 x 21.

GB100	100ct	\$ 21.50
GB25	25ct	\$ 6.95



## Water-Proof Tags

Durable to freezer conditions. Uses to keep customer record on. 100ct.

WPT1	1 3/4 x 2 3/4	\$ 12.00
WPT2	2 x 4 1/2	\$ 14.00



## Manilla Tags

Great for keeping customer names on to keep record of, etc. 100ct.

MT2	2 3/4 x 1 3/8	\$ 3.00
MT3	3 3/4 x 1 7/8	\$ 3.50
MT4	4 3/4 x 2 3/8	\$ 4.50



## Impresso Tags

Great with acid tans. Use ball-point pen on either side to make your impression, comes with wire

MIT	100ct	\$ 19.25
-----	-------	----------



## "Black Viper" Nitrile Gloves

Powder free, Textured, and Non-sterile. Very durable. Thicker Glove. Good to use with paints and other chemicals  
BV6100 \$ 26.00  
Sm, Med, Lg & X-Lg 100ct



## Tongue Depressors

Used to mix paints. Also used to mix and apply adhesives.

TD1	100ct	\$ 4.00
-----	-------	---------



## 6" Long Q-Tips

Used to clean over spray of paints and chemicals on eyes, nose and hard to reach areas.

QT6	100ct	\$ 3.50
-----	-------	---------



## Chip Brush

Brush has natural bristles hard wood handle.

CHP1	1"	\$ 1.00
CHP2	2"	\$ 2.00



## 1oz Plastic Mixing Cup

Used to measure paints, chemical and etc. 100ct.

MC1	\$ 4.00
-----	---------



# Hangers and Screws



LR5 Moose

LR5	4 x 4 1/2	\$ 3.25
-----	-----------	---------



LR4 Elk

LR4	3 1/2 x 3 3/4	\$ 2.99
-----	---------------	---------



LR3 Deer/Fish

LR3E	2 x 2 1/8	\$ 0.69 ea
LR3D	Dozen	\$ 9.25
LR3Ct	100ct	\$ 60.00



LR2 Deer/Fish

LR2E	2 x 2 1/4	\$ 0.69 ea
LR2D	Dozen	\$ 9.25
LR2Ct	100ct	\$ 60.00



Noose Hanger

Snap in half to get 2-Deer hangers for the price of one.

NH	\$ 1.50
----	---------



Heavy Duty Swivel Hanger

HDSH2D	DZ / 2 hole	\$ 2.50
HDSH2G	100ct. 2 hole	\$ 22.50
HDSH4D	Dz / 4 hole	\$ 2.25
HDSH4G	Gross 4 hole	\$ 23.00

709



Mag. Hanger

MH807	50ct.	\$ 8.00
MH709	50ct.	\$ 8.00
MHD709	12ct.	\$ 1.95

807



Lg Flat Hangers

Code	2x5/8	Price
FHLD	12ct.	\$2.00
FHLG	100ct	\$12.00



BH	100ct.	\$ 12.00
----	--------	----------



"3-D" Swivel Hanger

The 3-D Swivel was designed to move your mounts in different positions on the wall. Can be flat against the wall or angled from wall.

3DSH	\$ 16.00
------	----------



"3-D" Wall Ped/Hanger

Special wall pedestal hanger. Made in USA.

3DWPH	\$ 9.00
-------	---------



Flat Head Phillips Head Screws  
Screws 8 x 9/16

HSI	100ct.	\$ 4.00
-----	--------	---------



Self Starting Phillips Head 2 1/2"

PHS2	100ct.	\$ 5.00
------	--------	---------



Self Starting Phillips Head 1 5/8"

PHS1	100ct.	\$ 4.00
------	--------	---------



# Horn Mount Covers and Accessories



Antler Mount Cover

High quality and versatile synthetic antler cover with the look and feel of soft velvet.

Code	C40800	\$ 4.50
------	--------	---------



Ultimate Antler Cover

Durable, flexible rubber horn mount cover with detailed leather look and design. One size fits ALL.

Code	AMC	\$ 8.95
------	-----	---------



Horn Mount Covers

Available in Black, Brown & Saddle Tan

Code	HMCM	\$ 11.40
Code	HMCL	\$ 12.40

## Walnut Hollow Antler Mounting Kit



Antler Mounting Kit includes supplies needed for creating an antler display. Plaque not included.

- 2 - 2" Screws for Assembly
- 2 - Small Screws for Hanger
- 1 - Saw tooth Hanger
- 2 - Decorative Tacks
- 1 - 12" Gold Cord
- 1 - Antler Mount Cover

Code	MK29352	\$ 6.65
------	---------	---------



Decorative Rope

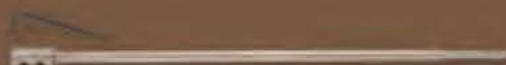
Code	DRY	\$ 3.75 yds.
------	-----	--------------



Decorative Nails

Polished brass look and are ideal for use with the antler mounting covers.

Code	DN	\$ 4.50
------	----	---------



Drill-Bit  
Extender

For the hard to reach spot, on elk for example (throat), etc.

Code	DBEXT12"	\$6.00
------	----------	--------



Wire Nails

Code	WNBS	Bright Steel	1lb	\$ 12.50
------	------	--------------	-----	----------



Magnetic Brad Pusher

Pushes pins in easily without any discomfort to fingers. Spring loaded mechanism with magnetic tip.

Code	MBP	\$ 7.00
------	-----	---------



James Deer Skull Plates

Code	SPS	\$ 8.50
Code	SPM	\$ 9.50



Foot Forms (Each)

Code	FFS	Small	\$ 7.70 ea
Code	FFM	Medium	\$ 7.70 ea
Code	FFL	Large	\$ 7.70 ea



Foot Ferrules Natural

Code	FFNS	Small	\$ 4.00pr
Code	FFNM	Medium	\$ 4.00pr
Code	FFNL	Large	\$ 4.00pr



# Brushes, Freezer Alarm & Misc



Grooming Brush

Excellent medium bristle not too hard and not too soft, firm plastic handle.

Code	SGB	\$ 1.75
------	-----	---------



Brass Wire Brush

Great for brushing out hair that is stuck together.

Code	BWBS	\$ 1.25
Code	BWBM	\$ 1.50



2 in 1 Brass Brush

Great for getting paint out of the ears or around the eyes . 7" LONG

Code	2N1B	\$ 1.25
------	------	---------



2 in 1 Steel Brush

Great for getting paint out of the ears or around the eyes . 7" LONG

Code	2N1SB	\$ 1.25
------	-------	---------



Big Steel Wire Brush

Great for form scratching on forms with a rough spot . Ideal use and recommended by staff.

Code	BSWB	\$ 2.00
------	------	---------



Fan Comb

Great use for long haired capes . Comb 6" long , 1 " teeth .

Code	FC	\$ 10.50
------	----	----------



Grooming Brush

Used for grooming long or short haired animals 1/2" metal bristles.

Code	WGB	\$ 5.95
------	-----	---------



Steel Wire Brush

Great for easy clean-up of flesh or fat on birds or small mammals.

Code	SWBS	\$ 1.50
Code	SWBL	\$ 1.75

Perfect for monitoring temperatures to avoid spoilage, of deer capes, fish, small mammals and foods. This freezer alarm is designed for quick viewing, this thermometer has a digital dual progress display and a 39" sensor cable so you can monitor temperature without opening the door. This thermometer is designed to sound an alarm when the refrigerator reaches 46 degrees Fahrenheit or when the freezer reaches 15 degrees Fahrenheit. For outstanding durability, this shatterproof refrigerator / freezer alarm is made from heavy duty ABS plastic.

Food-safe ABS plastic construction

39" sensor cable

Dual progress display

Sliding mode switch

Shatterproof

2-way mounting: Velcro® / suction

Temperature range: signal sounds at 15°F or 46°F; -58°F to 158°F

Dimensions: 8" x 4-1/2" x 4/5"

Include 1.5V AA IEC LR6 Alkaline battery

Vinyl Apron

8 mil thick . Resistance to abrasions, punctures, oil, fat and chemicals.

Code	VA	\$ 12.00
------	----	----------

Freezer Alarm



Code	FA	\$ 17.95
------	----	----------





# INDEX

## A

Acid Brush.....	92
Air Brush AZTEK .....	92
Air Brush Cleaning Kits.....	92
Air Brush Wash Bottle.....	92
Aluminum Sulfate .....	101
Antelope Forms .....	36
Anthony Eddy Turkey Products.....	77
Antler Stain.....	42
Antler Mount Cover.....	89-113
Antler Mount Kits.....	113
Apoxie Sculp.....	100
Aprons.....	114
Aves Products.....	100
Axis Form.....	38

## B

Bactenacide.....	99
Bags for capes.....	111
Barn Wood Panels.....	90
Bird Bodies, Heads.....	80,81
Bird Eyes.....	68
Black Buck.....	36
Bobcat Forms.....	46,52,58
Bobcat Nose Paint Kit.....	55
Bondo Spoon.....	102
Bondo.....	102
Borax.....	101
Brad Pusher.....	113
Brass Hangers.....	112
Brushes- Brass.....	114
Brush-Steel.....	114

## C

Calipers.....	111
Casting & Mounting Supply.....	100
Ceramic Knife Sharpener.....	103
Cheek Tool.....	110
Cape Shampoo.....	99
Clay, Clean, Gator Clay.....	102
Clay, Dry Potter.....	102
Citric Acid.....	101
Critter Clay.....	100
Colorjet Bird Feet.....	82
Compressor.....	94
Corn Cob Grit .....	81
Cotton .....	80
Coyote Forms.....	47,54,59
Coyote Wall Pedestal.....	59
Coyote Pedestal Forms.....	54,59
Chopped Fiberglass.....	102
Chip Brush.....	111
Cypress Panels.....	86

## D

Dan D Noser.....	75,107
Decorative Nails.....	113
Decorative Rope .....	113
Deer Forms.....	4-36
Drill Extender.....	113
Duck Heads Painted.....	81
DVD, Training Smooth on, Squirrel.....	62,100

## E

Ear Base.....	101
Earbutts.....	75

Ear Liners, deer.....	74,75
Ear Liners, small mammals.....	56
Ear Openers.....	106
Elk Form.....	37
Epoxy Tools.....	107
European Skulls.....	41-42
European Skull Panels.....	86-91
Euro pins.....	109
Excelsior.....	81
Eyes.....	63-73
Eye Nose Tanning Cream.....	98
Eye Protect.....	73
Eye Wax.....	102

## F

Fallow Deer .....	38
Files.....	106
Fin Backing Tape.....	84,110
Fish Bodies.....	84
Fish Filler.....	101
Fish Fleshers.....	110
Fish Skinning Knife.....	110,103
Fish Shears.....	105,110
Fisher Form.....	54
Pixit (Aves).....	100
Foam.....	102
Form Prep .....	102
Form Rougher.....	106
Fleshing Blade.....	104
Fleshing Cone.....	104
Fleshing Knife.....	103
Flex Bird Eyes.....	81
Flex Fish Eyes.....	65,84
Flock, Red or Black.....	101
Foot Ferrules.....	113
Foot Forms.....	113
Form Prep Brushes.....	106
Fox Forms Gray and Red.....	49-50,54
Forceps.....	105
Fortune Tailers.....	77
Freezer Alarm.....	114
Fur Comb.....	114

## G

Game Bags.....	111
Grooming Bottles.....	92
Grooming Brush.....	114
Gloves (surgical).....	111
Glycerin.....	82

## H

Hair Sheen.....	99
Hand Rasp.....	106
Hangers.....	112
Havalon Knives.....	103
Havels Blades.....	104
Hide Adj. Tools.....	106
High Shine Top Coat.....	84,95,110
Horn Mount Covers.....	89,113

## I

Inspection Mirror.....	44
------------------------	----

## J

Jaw Sets (Mohrs) jaw juice.....	43-44
---------------------------------	-------

## K

Knives.....	103,108
Klear Kote.....	84
Knives (Deer, fish skinning).....	103
Knobloch Products.....	99
Krow Oil .....	56
Krow Soap.....	56
Knife Sharpener Edge Slider.....	103
Krowtann 2000 .....	56
Krowtann Whitetail Deer .....	56

## L

Leather Puncher.....	106
Leather Strop.....	103
Level - Rite Hangers.....	112
Lip Tucking Tools.....	107
Liqua Soft Tanning Oil.....	99
Liqua Tan.....	99
Liquid Crystal Top Coat.....	96
Lynx Form.....	54

## M

Mac Z Scaler.....	110
Magnetic Knife Holder.....	103
Mammal Base.....	77
Mammal Changeout Heads.....	52
Mammal Degreaser.....	98
Mesquite Panels.....	91
Mini Flesher .....	104
Mink Forms.....	54
Mohr's (Duck Feet).....	82
Modeling Tools .....	107-108
Molding Products.....	101
Moss, Spanish & Sheet.....	92
Magic Sculp.....	101
Magic Smooth.....	101
Mixing Cups 1oz Plastic.....	111
Modge Podge.....	102
Mold Release.....	100

## N

Neck Material.....	80
Necker Knife.....	103
Needles.....	109
Noon's Turkey Plug.....	78
Noses, Artificial Small Mammal.....	55
Noses, Artificial Deer .....	75
Novelty Deer rump, Weird hsrld.....	35,49

## O

Oil Paint.....	97
Opti Visors.....	111
Otter.....	48
Ozark Woods.....	52,54,55,56
Ozark Woods Panels.....	86
Ozark Woods Pedestal Forms Rug Shells.....	54-55

## P



# INDEX

## P

Paasche Air Brushes & Acc.	93-94
Paint Brushes red sable and more	97
Paint.....Laquer, water, oil base	95,96
Panels.....	86-91
Panels-Ozark Woods	86
Paper Mache Aves	100
Para Soft	99
Para Tan	99
Pedestal Forms Small Animals	54
PH Strips	99
Pinchback Reproductions Skulls	41-42
Pinchback Skull Plates	42
Pins (T)	109
Pins (bank)	109
Pins (pearl head)	109
Pins (upholster)	109
Pin - Black Insect	109
Placing Spike	106-107
Plaster Molding	101
Preservative (dry)	101
Protex Mt. Care	99
Protex Pre- Soak	99

## Q

Q-Tips	111
--------	-----

## R

Raccoon Forms	48,54
Raccoon Pedestal Form	54
Rasp	106
Redi-Caps	93
Relaxer R	99
Reptile Tan	98-99
Rocks	85
Rustic Shadow Panels	90

## S

Saber Saw	107
Safety Pickle	99
Safety Solvent	100
Scalpels and Blades	104
Screws	112

## S

Scissors	105
Sewing Palms	109
Sharpener	103
Sheep Forms	40
Skife Knives	103
Skife Refills	103
Skinning Knives	103
Skull Plates	113
Skull Bleach	101
Skull Hangers	112
Skull Paint Kit	42
Skunk Form	54
Smooth On Products	100
Snake Tan	98
Snow, Artificial	92
Sodium Bicarbonate	101
Sodium Sulfate	101
Speedy Septum System	75
Squirrel Forms	61-62
Stain Away	82,98
Stick-IT Hide Paste	102
Stop Rot	98
Stop Slip	99
Super Fish Gloss	84
Super Fish Sealer	84
Sure Bond	98,102
Sure Cure	98
Sure Scent	98
Syringe Needles	82

## T

Tags, Impression , Mannila , Water proof	111
Tails, Artificial, small mammals	56,62
Tail Slippers	62
Tail Slitter	104
Tail Zipper	104
Tanning Cream (eye & noses	98
Tape Measure - Flexiable and Retractable	111
Taxidermy Magic	102
Texture Bottles	102
Thimbles sewing	110
Thread (Cape Thread)	109
Tongue Depressors	111
Turkey Fan Panel, Oak & Wal, Engraved	87,91
Turkey Bodies, Heads and Acces	77
Tweezers	105
Turkey Roost	91

## V

Velvet Preserve	82
-----------------	----

## W

Wall Ped Hanger	112
Weather Wood Panels	90
Wing and Feet Preserves	82,98
Wire, Bird	80,82
Wire Brushes	114
Wire Nails	113

## Z

Zap-a-Gap	102
Zap gel	102
Zap Kicker	102

Paul Witt Taxidermy  
62 Witt Road  
Belmont, MS 38827  
662-660-4139



## Taxidermy Lessons

Paul Witt, award winning taxidermist, teaching in shop, hands on classes in all four categories. Games Heads, Birds, Fish and Life Size Mammals Day night and weekend classes available. Each Category will last approximately forty hours.

Paul has also been sculpturing for James Taxidermy Supply for many years and giving private instructions in his own shop.

Paul has been judging competitions and giving seminars throughout the southeast since the early 1980's.





# Terms and Conditions

## **Discounts: (Deer Forms ONLY)**

5% on \$250.00

10% on \$500.00

Information Only: (662) 286-5133

[www.jamestaxidermysupply.com](http://www.jamestaxidermysupply.com)

## **Orders by Phone:**

United States and Canada

(800) 488-3337

8 am to 4:30 pm Monday - Friday CST

## **Order by FAX:**

(662) 665-0344

Available 24 hours a day

## **Order by Mail:**

James' Taxidermy Supplies

14A CR 247

Glen, MS 38846

## **Order by E-Mail:**

[jamestaxidermysu@bellsouth.net](mailto:jamestaxidermysu@bellsouth.net)

Orders received by 12 pm are shipped same day if possible

## **James Taxidermy Representatives**

have a strict policy of repeating all orders back to customers.

The items that are read back and agreed upon are the exact items that print out on customers invoice. Our representatives will patiently review your orders as many times necessary to ensure accuracy.

**Pickup Orders:** All Customers are welcome to arrange to pickup their orders. However, to ensure that all your products are ready when you arrive, we ask that you place your order 24-48 hrs ahead of time. For x-large orders allow a week or 2 weeks even though it could be less.

## **Forms of Payment:**

We accept VISA, MasterCard, Discover, Debit Cards Only. Checks will have to have picture ID with Drivers License # and clear the bank before processed.

## **Return Policy:**

There will be a 10% restocking fee on all orders returned within 30 days of original invoice shipping date. No orders after 30 days will be excepted for return. No altered forms or forms tampered with, in any way be accepted for exchange or return.

**No (UPS) C.O.D.** Due to insufficient funds and Refusals.

Mississippi Residents add 7% Sales Tax

Orders under \$25.00 have a \$2.00 Handling Fee

Returned checks have a \$45.00 Service Charge.

**Worthless Checks are Prosecuted.**

Due to price increase beyond our control.

Catalog Prices are subject to change without notice.

All forms in this catalog are copyrighted. Any copying of these forms or parts is strictly prohibited and will be prosecuted.

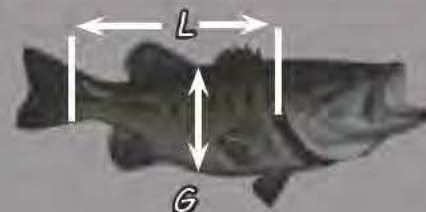
## Gameheads Measurements



"A" = From tip of nose to corner of eye.

"C" = Circumference of neck at smallest point.

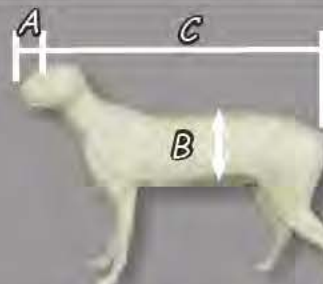
## Fish Measurements



"G" = Measure the biggest part around the belly

"L" = Base of tail to back edge of collar bone.

## Mammals Measurements



"A" = From tip of nose to corner of eye.

"B" = Circumference of belly.

"C" = From tip of nose to base of tail.





**James'**  
**Taxidermy Supply**  
 14-A CR 247  
 Glen, MS 38846



**LIFE**  
**●**  
**TONE**

